

School District # 43

Proposed Regular Catchment Changes

November 29, 2017



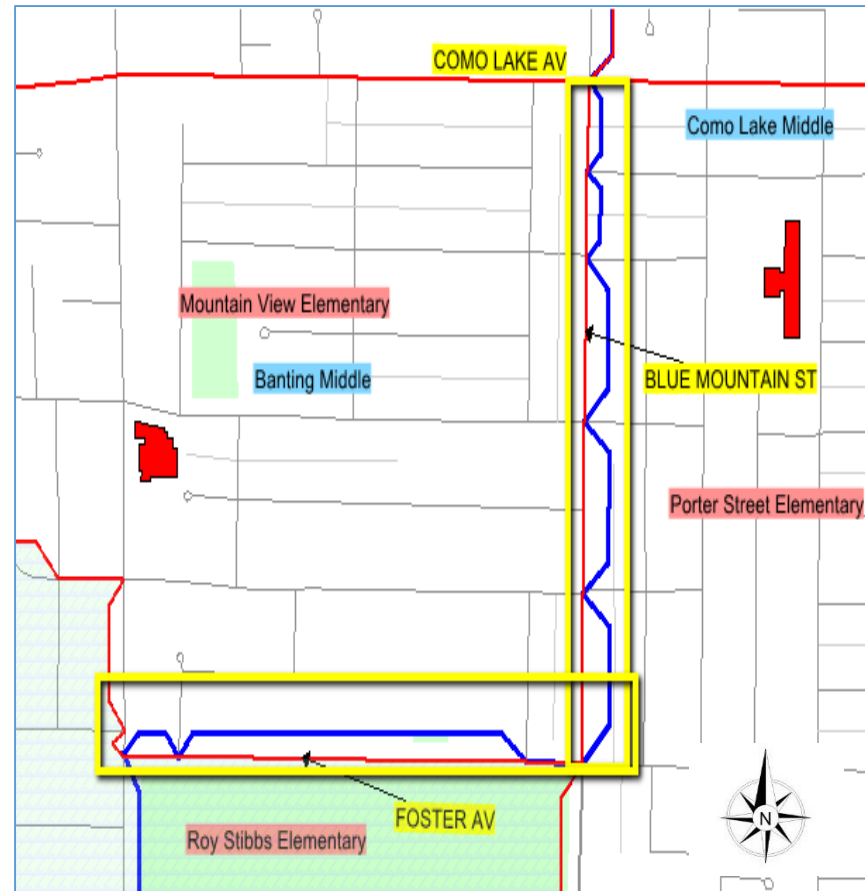
Learning for a Lifetime

Background

- Regular Programs and Programs of Choice potentially needing alterations for the 2018-2019 school year were identified following a district-wide catchment area review.
- Determination that action is required in a few areas to manage enrolment.
- Many different factors were considered in creation of the proposed new catchments.
- School Act – Grandfather Clause
 - Students currently enrolled in a school can stay; siblings may choose to cross catchment using the sibling clause if an older sibling will still be in the same school during the next school year.
- There are proposed changes to five regular catchment areas.

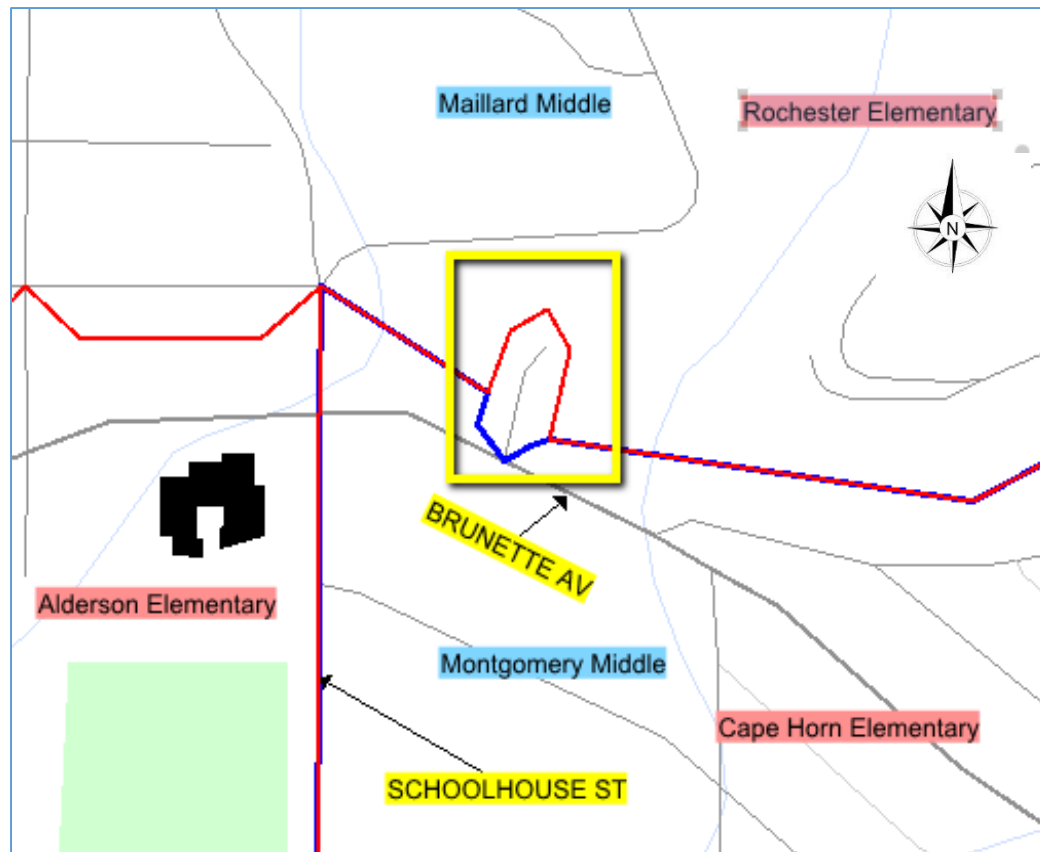
Porter Street and Mountain View

- 757 – 935 (odd numbered addresses) Foster Avenue students between Robinson Street and Blue Mountain Street are proposed to change to the Porter Street Elementary catchment.
- 651-753 (odd numbered addresses) Blue Mountain Street students between Foster Avenue and Como Lake Avenue are proposed to change to the Mountain View catchment.



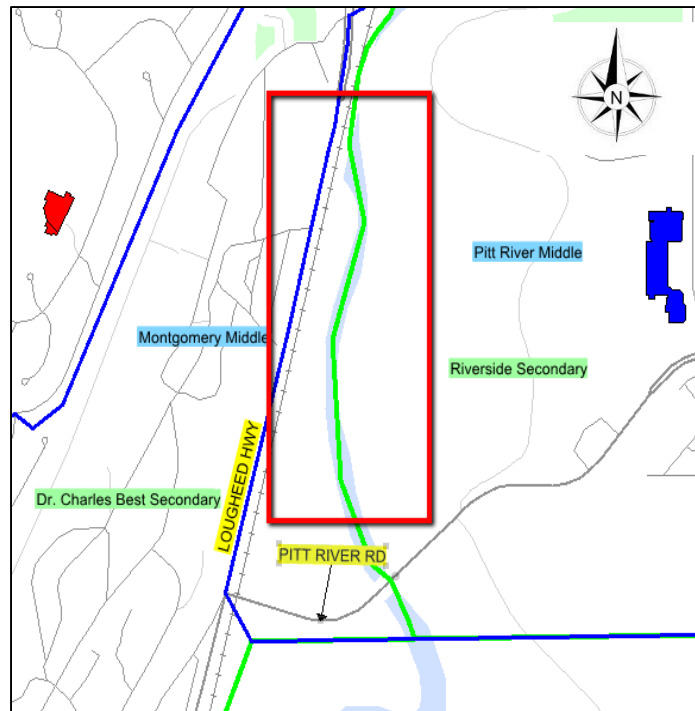
Cape Horn and Rochester

- All Marathon Court students are proposed to change from the Cape Horn Elementary catchment to the Rochester Elementary catchment.



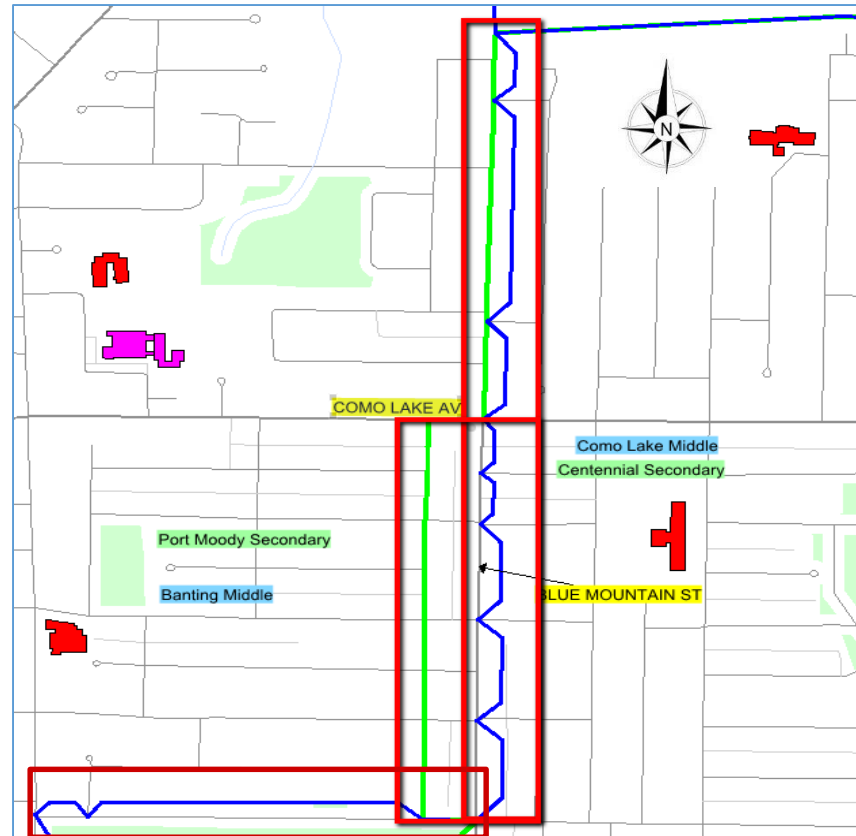
Montgomery and Pitt River

- The boundary between Montgomery Middle and Pitt River Middle is proposed to change from Loughheed Highway to the Coquitlam River. This area is currently designated as a Natural Area and is not zoned for housing. There are no students living in this proposed area change.



Centennial and Port Moody Secondary

- 757 – 935 (odd numbered addresses) Foster Avenue students between Robinson Street and Blue Mountain Street are proposed to change from the Port Moody Secondary catchment to the Centennial Secondary catchment.
- 655 – 763 (odd numbered addresses) Hailey Street students are proposed to change from the Centennial Secondary catchment to the Port Moody Secondary catchment.
- 651-1015 (odd numbered addresses) and 654-754 (even numbered addresses) Blue Mountain Street students north of Foster Avenue are proposed to change from the Centennial catchment to the Port Moody Secondary catchment.



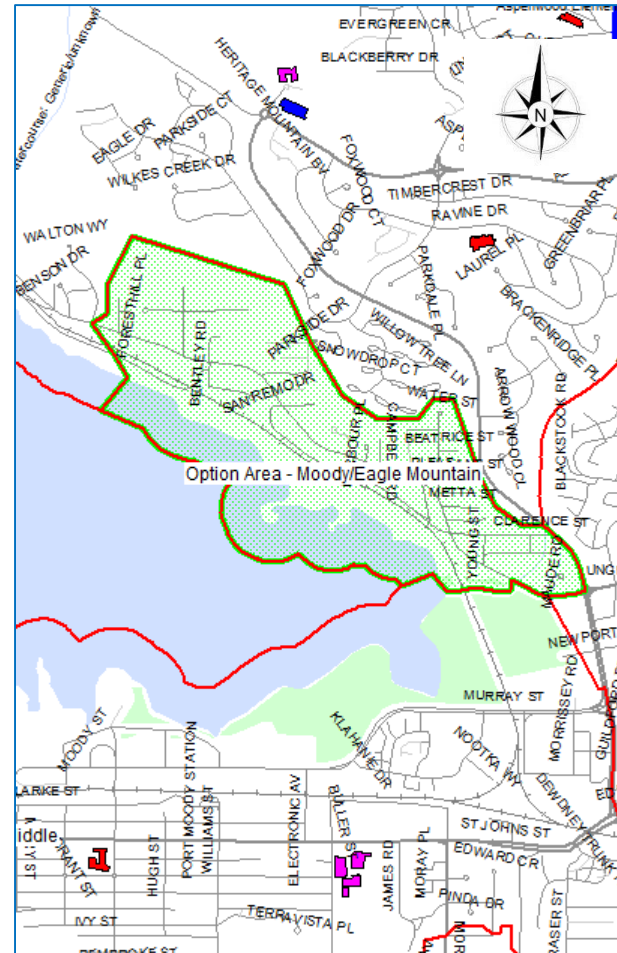
Eagle Mountain Proposed Catchment Change

- Why are these changes needed?
 - Restoration of Class Size and Composition Language
 - Enrolment Pressures
- The proposed changes for Eagle Mountain include adjusting three middle school catchment areas.
 - Proposed that the Option Area (Eagle Mountain Middle/Moody Middle catchment) in the Pleasantside neighbourhood change to the Moody Middle catchment area only.
 - Proposed that part of the eastern portion of the Eagle Mountain Middle catchment area, north of David Avenue, change to the Summit Middle catchment area.

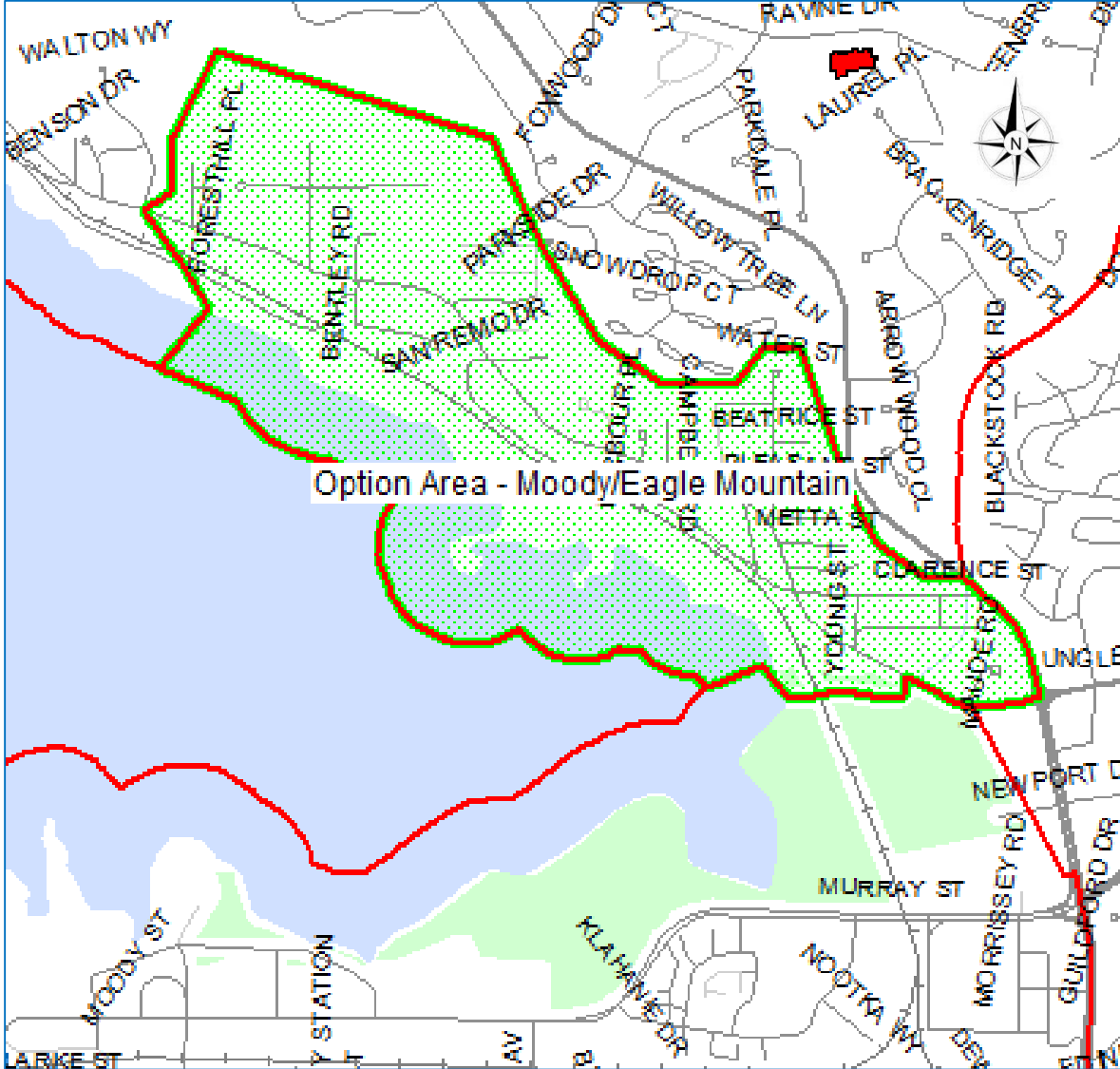
Eagle Mountain Middle Catchment Proposed to Change to Moody Middle Catchment

Proposed Change Area includes all addresses located in the current Option Area.

The Option Area is from Heritage Mountain Blvd to Walton Way and includes all addresses along loco Road and all addresses of streets off loco Road in this area.



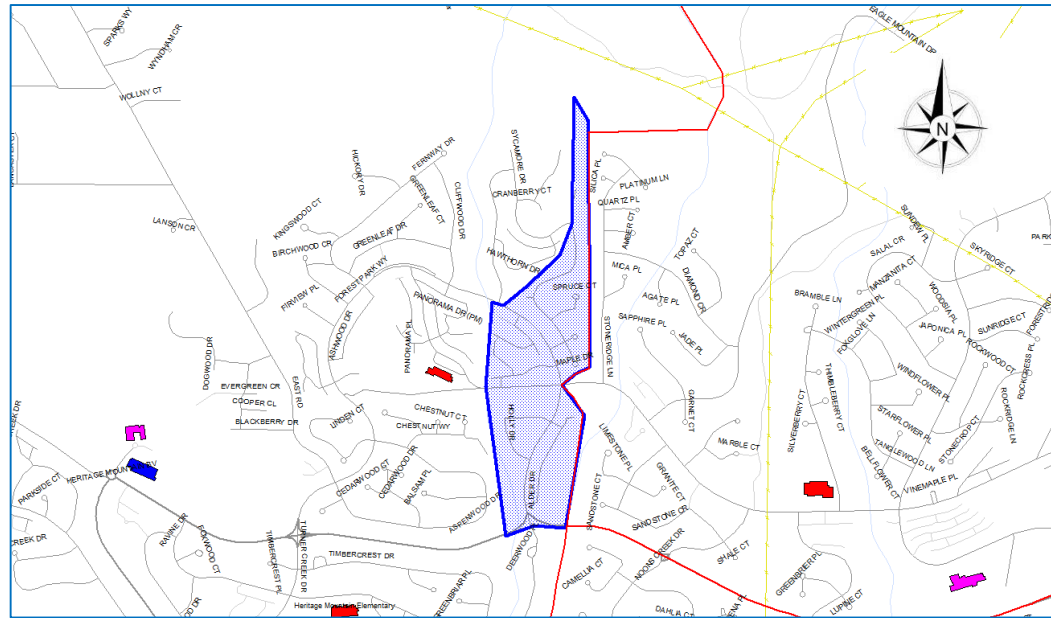
Eagle Mountain Middle Catchment Proposed to Change to Moody Middle Catchment



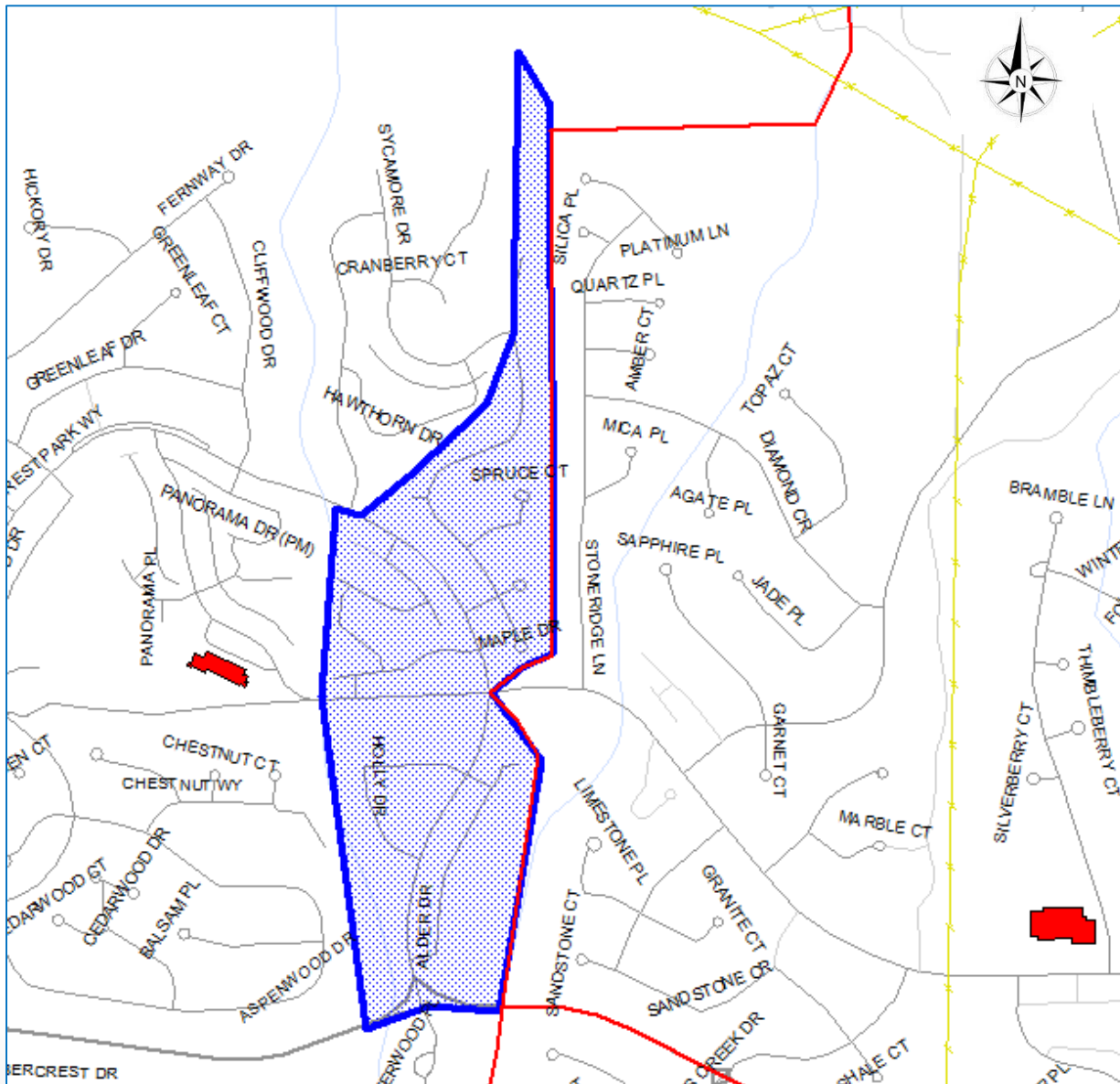
Eagle Mountain Middle Catchment Proposed to Change to Summit Middle Catchment

Proposed Change Area to Summit Middle Catchment includes all addresses located:

- From 500-525 Forest Parkway
- In the 2200 Panorama Drive complex
- On Alder Drive, Holly Drive, Maple Drive, Maple Court, and Spruce Court



Eagle Mountain Middle Catchment Proposed to Change to Summit Middle Catchment



Feedback

- Please provide your comments and ideas on the feedback forms that are located on the side tables.
 - Please include the school(s) of your child/children if you are a parent/guardian.

Next Steps

- Feedback will be reviewed.
- Final decisions will be communicated out via schools and our website.