

COMMUNITY NOTICE

Port Moody

Cecile Drive Update

The tunnel boring machine (TBM) is currently under Cecile Drive as part of planned regular maintenance for the contractor to inspect and replace the cutterhead tools. During this process, an air pocket developed as ground material came into the cutter chamber and made its way to the surface. The air pocket resulted in a hole in the asphalt on Cecile Drive. The hole was filled immediately, with additional fill added over the following few days. The contractor is continuing to monitor the area and top up the concrete as required.

In order for crews to perform maintenance on the TBM, they need to enter the tunnel boring machine cutterhead chamber. Prior to entering the cutterhead chamber, the chamber is emptied and a stable ground face is required to ensure conditions are safe for workers to inspect and replace the cutterhead tools. During recent preparations for the maintenance, a stable ground face could not be maintained and additional ground material came into the chamber, which could result in additional settlement at the surface within the fenced area.

Safety is the first priority on the Evergreen Line project and precautionary measures are taken to ensure the public is not at risk as the tunnel boring machine continues its progress. Maintenance locations are planned and the area is fenced off to ensure public safety. We will continue to conduct additional surveying and investigative work, and keep the roadway fully closed and this area fenced off while this work is underway.

WHAT TO EXPECT

- As a precaution, Cecile Drive (west of Highview Place) will be closed until further notice while crews conduct further assessment. This closure will be in effect 24 hours a day.
- Residents wishing to access the Seaview community will be detoured south on Clarke Road to Glenayre Drive (as shown on the map on page two). Access for residents living at 1030 Cecile Drive will be maintained with the assistance of traffic control personnel.
- Fencing will remain while crews conduct additional surveying, geotechnical investigations and top up the concrete in the area as required.
- Cecile Drive will be repaved once the maintenance is complete and tunnel boring resumes.
- Temporary parking restrictions on the south side of Cecile Drive will be in effect.
- Bus stops have been temporarily relocated as part of this closure. Please watch for signs that will indicate the temporary bus stop locations.
- Pedestrian access on the north side of Cecile Drive will be maintained.

(continued on page two)

ABOUT EGRT CONSTRUCTION

EGRT Construction has been awarded the contract to design and build the Evergreen Line.

For more information about the Evergreen Line Project, please visit www.evergreenline.gov.bc.ca.

CONTACT US

To find out more, or to receive traffic updates:

Traffic Information Line (available 24 hours, 7 days a week):

604-927-2080

Email: info@evergreenline.gov.bc.ca

Facebook: www.facebook.com/evergreenline

COMMUNITY NOTICE

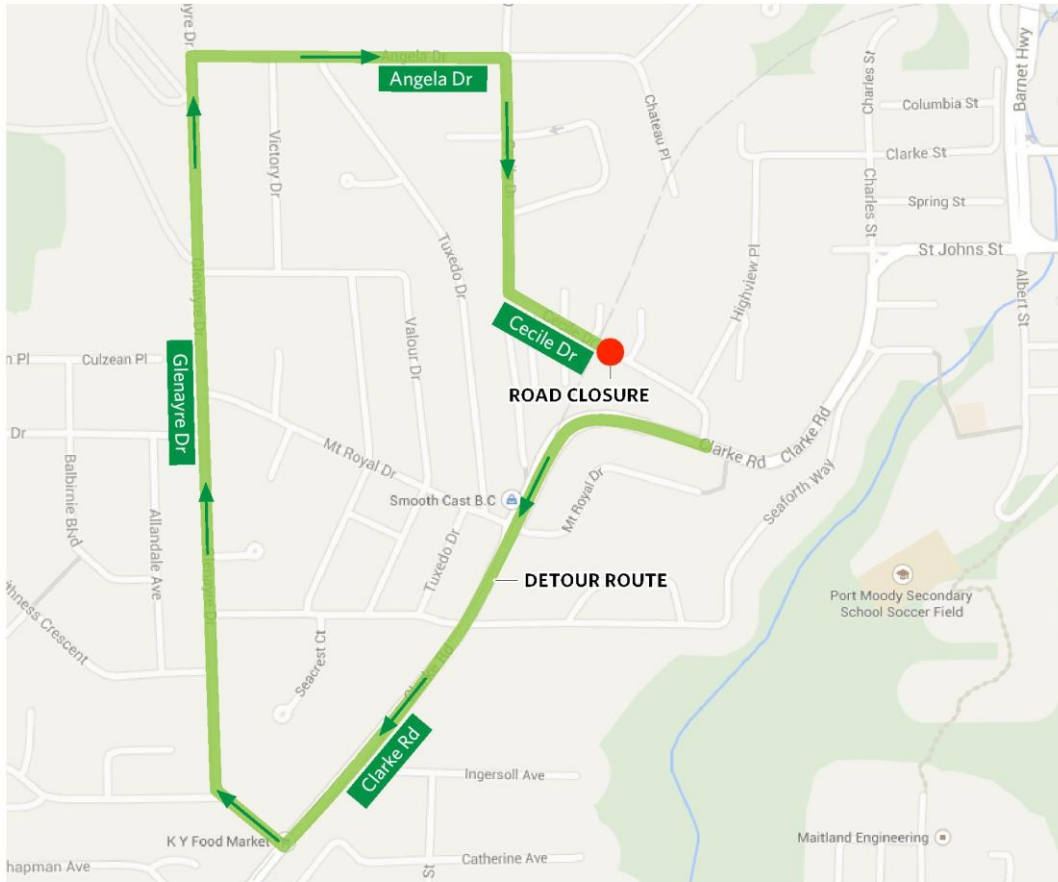
Port Moody

(continued from page one)

- Every effort will be made to minimize disruption and to complete this work as soon as possible, but nearby residents can expect some noise related to the use of heavy machinery. Crews will be working from 8 a.m. to 7 p.m., Monday through Saturday, and on Sundays only if required.

Your patience and understanding is appreciated. Please contact the Traffic Information Line at 604-927-2080, available 24 hours a day, seven days a week with any questions or concerns.

Detour Map



ABOUT EGRT CONSTRUCTION

EGRT Construction has been awarded the contract to design and build the Evergreen Line.

For more information about the Evergreen Line Project, please visit www.evergreenline.gov.bc.ca.

CONTACT US

To find out more, or to receive traffic updates:

Traffic Information Line (available 24 hours, 7 days a week):

604-927-2080

Email: info@evergreenline.gov.bc.ca

Facebook: www.facebook.com/evergreenline