



PARENT ADVISORY COUNCIL

MOUNTAIN VIEW ELEMENTARY SCHOOL

PAC HUB  <https://linktr.ee/mountainviewpac> |  <https://www.sd43.bc.ca/school/mountainview/Parents/PAC>
 mountainviewpac740@gmail.com |  <https://www.facebook.com/MountainViewElementarySchoolPAC>

Mountain View Elementary PAC General Meeting Minutes

Date & Time: Tuesday, April 14th, 2026, 8:00pm

Location: Virtual via Zoom

IN ATTENDANCE:

Executive members:

President - Shirley Low
Vice President – John Park
Secretary - Chelsea Dente & Miriam Galván Blanco
Treasurer– Marie Chiew & Radu Pop
DPAC Representative – Madiha Kaleem
Hot Lunch Coordinator– Dilara Litonjua
Recycling Program Coordinator – Shinichi Hosomi
Social Media Coordinator – Arfinda Setiyoutami

PAC members at large:

Kelly Shum, Tally Melion, Lisa Sathongnhot

Regrets:

Lydia Ko
Tatiana Fischer

Mountain View families:

Vitalii
Mojgan Vajihah
Anna Kushnarenko

Mountain View school representative(s):

N/A

1. WELCOME / CALL TO ORDER

The meeting was called to order at **8:02 PM**, and quorum was confirmed.

2. PARENT EDUCATION SERIES #1 - SELF-ADVOCACY & PERSPECTIVES

Wendy Yu, SD43 District Principal – Diversity & Anti-Racism (30 Minutes)

Presentation slides will be available separately.

3. APPROVAL OF TODAY'S AGENDA

MOTION made by Dilara and seconded by Radu approve the agenda as presented.

CARRIED

4. APPROVAL OF MINUTES FROM FEBRUARY 2026 MEETING

MOTION made by Chelsea and seconded by Madiha to approve the minutes as presented.

CARRIED

5. PRINCIPAL'S REPORT – PAC President on behalf of School's Principal

- **Como Lake Relays** - This Wednesday April 15th, we have grade 4/5 students heading to Como Lake to race around the lake against other District elementary school teams. Mr. Van Hove is contact.
- **Thursday, April 16th:** Div 6 and 7 will be taking a field trip to Science World.
- **Earth Day - Wed April 22nd:** Ms. Abel is working with students to learn more about the importance of global water conservation; div 6 and 7 have invited BC Hydro to present in their classrooms; Mrs. Morris is working with students to study Bees and their importance in our ecosystem.
- **World Book Day - Thursday April 23rd:** teachers will be emailing their families about activities they will be doing to celebrate their favorite story characters. Ms. Abel / Ms. Karim are contacts.
- **Class Photos and school-wide Panorama photo - Friday May 1st**
- **Connecting to Kindergarten - May 8th** in the afternoon. Ms. Lee is contact. Time TBD.
- **District Wide Emergency Release Drill - Thursday May 14th at 2pm.** Please see District website for more details. It is important that all families have their yellow emergency forms in. This week, our office will be messaging any families that are missing their forms.
- **Public Speaking Assembly for Grades 4 & 5- Friday, May 15th**
- **Tuesday, May 19th: District Track and Field meet** - For qualifying grade 3-5 students (held at Town Centre) Mr. Van Hove is contact.
- **Friday, May 22nd Parent Tea** - as in past, there will be an invitation for parents to stay in the courtyard after drop off and enjoy some socializing, light refreshments and entertainment by some of our students. Ms. Abel is contact.
- Ms. Karim (Student Services) will be going off on leave this month, her last day will be April 23rd. Ms. Laura Park will be replacing her as of Monday, April 27th until the end of the school year.

Any families that know they will be moving before the new school year starts to let the school know their plans once they have confirmed them. The school is in the stages of pre-planning for 2026-27 and advance knowledge of students who will leaving us can help us to do this more accurately.

6. TREASURER REPORT (FEB & MAR 2026) – PAC Treasurer: Marie Chiew

PAC Treasurer's Report

Mountain View Elementary Parent Advisory Committee (PAC)
 MONTH: FEBRUARY 2026

| Account - GENERAL | |
|----------------------------|-----------------|
| OPENING CASH BALANCE | 7,320.10 |
| REVENUE | 1,095.84 |
| Hot Lunch Fundraiser | 1,095.84 |
| EXPENSES | 1,707.30 |
| Hot Lunch Fundraiser | 1,707.30 |
| ENDING CASH BALANCE | 6,708.64 |

| Account - GAMING | |
|----------------------------|------------------|
| OPENING CASH BALANCE | 10,697.08 |
| REVENUE | - |
| EXPENSES | 56.00 |
| Pancake Breakfast | 56.00 |
| ENDING CASH BALANCE | 10,641.08 |

| Account - SAVINGS | |
|----------------------------|-----------------|
| OPENING CASH BALANCE | 6,198.35 |
| REVENUE | 0.48 |
| Interest | 0.48 |
| EXPENSES | - |
| ENDING CASH BALANCE | 6,198.83 |

| BANK ACCOUNT SUMMARY | |
|------------------------------|------------------|
| General Account | 6,708.64 |
| Gaming Account | 10,641.08 |
| Savings Account | 6,198.83 |
| Total Funds Available | 23,548.55 |

FUNDRAISING SUMMARY

| Fundraising Event | Revenue | Expenses | Net Income |
|--------------------------|-----------------|-----------------|-------------------|
| Hot Lunch Fundraiser | 1,095.84 | 896.70 | 199.14 |
| Grand Total | 1,095.84 | 896.70 | 199.14 |

PAC Treasurer's Report

Mountain View Elementary Parent Advisory Committee (PAC)

MONTH: MARCH 2026

| Account - GENERAL | |
|-----------------------------------|-----------------|
| OPENING CASH BALANCE | 6,708.64 |
| REVENUE | 2,775.44 |
| Hot Lunch Fundraiser | 1,021.06 |
| Whitecaps Fundraiser | 1,124.38 |
| Community Coupon Books Fundraiser | 630.00 |
| EXPENSES | 767.37 |
| Hot Lunch Fundraiser | 767.37 |
| ENDING CASH BALANCE | 8,716.71 |

| Account - GAMING | |
|-------------------------|------------------|
| OPENING CASH BALANCE | 10,641.08 |
| REVENUE | - |
| EXPENSES | - |
| ENDING CASH BALANCE | 10,641.08 |

| Account - SAVINGS | |
|--------------------------|-----------------|
| OPENING CASH BALANCE | 6,198.83 |
| REVENUE | 0.53 |
| Interest | 0.53 |
| EXPENSES | - |
| ENDING CASH BALANCE | 6,199.36 |

| BANK ACCOUNT SUMMARY | |
|------------------------------|------------------|
| General Account | 8,716.71 |
| Gaming Account | 10,641.08 |
| Savings Account | 6,199.36 |
| Total Funds Available | 25,557.15 |


FUNDRAISING SUMMARY

| Fundraising Event | Revenue | Expenses | Net Income |
|------------------------------------|-----------------|-----------------|-----------------|
| Hot Lunch Fundraiser | 1,021.06 | 767.37 | 253.69 |
| Whitecaps Fundraiser | 1,124.38 | 949.75 | 174.63 |
| Community Coupon Books Fundraiser* | 630.00 | | 630.00 |
| Grand Total | 2,775.44 | 1,717.12 | 1,058.32 |

**Note: \$35 received per book and \$12.95 profit per book. Full expenses will be accounted for after fundraiser ends May 31.*

7. PRESIDENT'S REPORT – PAC President: Shirley Low

- **2026/27 PAC Executives Election at May 12th Annual General Meeting (AGM)**
If you're interested in an executive role for 2026/27 school year, please join us at our Annual General Meeting (AGM) to be voted into position. It will take place on Tues, May 12, 6:30pm start at the school. If you're unable to make it and are interested in a position, please email Shirley at mountainviewpac740@gmail.com for details. We welcome all parents to attend and light refreshments will be served. It's our only in-person meeting of the year, so don't miss out!



PAC EXEC ROLES

Interested? Have questions? mountainviewpac740@gmail.com

* Required Roles for PAC to Exist

| | | |
|---|---|--|
| <h3 style="color: #0070C0; text-align: center;">PRESIDENT *</h3> <ul style="list-style-type: none"> Liaise with Principal regularly Organize / Hosts PAC meetings Updates PAC community regularly Leads and supports PAC executives Oversees PAC initiatives & budget Signing authority on PAC accounts <p style="color: #0070C0; font-weight: bold;">COMMITMENT: 6-8 hrs per month</p> | <h3 style="color: #0070C0; text-align: center;">TREASURER *</h3> <ul style="list-style-type: none"> Responsible for PAC bank accounts Produce monthly reports Signing authority on PAC accounts Develops annual budget report Reconciles transactions and reimburse individuals, as required Applies for annual Gaming Grants Finalizes summary reports for events <p style="color: #0070C0; font-weight: bold;">COMMITMENT: 4-6 hrs per month</p> | <h3 style="color: #0070C0; text-align: center;">SECRETARY *</h3> <ul style="list-style-type: none"> Notetaker at all PAC & Exec meetings Helps with admin duties Tracks supplies / stock <p style="color: #0070C0; font-weight: bold;">COMMITMENT: 2 hrs per month</p> |
| <h3 style="color: #0070C0; text-align: center;">VICE PRESIDENT</h3> <ul style="list-style-type: none"> Supports President as required Acts on behalf of President, if req'd Helps leads and supports PAC execs Signing authority on PAC accounts <p style="color: #0070C0; font-weight: bold;">COMMITMENT: 2-4 hrs per month</p> | <h3 style="color: #0070C0; text-align: center;">DISTRICT PAC REP *</h3> <ul style="list-style-type: none"> Attends District PAC meetings Brings questions and info to and from our PAC to District PAC, as required <p style="color: #0070C0; font-weight: bold;">COMMITMENT: 3 hrs per month</p> | <h3 style="color: #0070C0; text-align: center;">HOT LUNCH COORDINATORS</h3> <ul style="list-style-type: none"> Sets hot lunch dates for the year Administers "Munch a Lunch" platform (sets menu & prices, manages & submit orders to restaurant vendors) Creates promo materials Source and coordinate with vendors Organizes hot lunch distribution and coordinates with volunteers <p style="color: #0070C0; font-weight: bold;">COMMITMENT: 4 hrs per month</p> |
| <h3 style="color: #0070C0; text-align: center;">MEMBERS AT LARGE</h3> <ul style="list-style-type: none"> Assists Executives with initiatives Roles may include, not limited to: <ul style="list-style-type: none"> Event Coordinator Communications Coordinator Fundraising Coordinator | <h3 style="color: #0070C0; text-align: center;">RECYCLING COORDINATOR</h3> <ul style="list-style-type: none"> Coordinates bi-weekly recycling sessions Liaise with Gr 5 teachers to recruit student volunteers Drops off recyclables to Recycling Depot <p style="color: #0070C0; font-weight: bold;">COMMITMENT: 2 hrs per month</p> | <h3 style="color: #0070C0; text-align: center;">SOCIAL MEDIA COORDINATOR</h3> <ul style="list-style-type: none"> Manages & creates content for online platforms (Facebook, Linktree, etc.) Liaise with other Execs for content <p style="color: #0070C0; font-weight: bold;">COMMITMENT: 4-5 hrs per month</p> |

- **2026/27 Budget Planning underway**
The annual budget will be presented at our AGM in May – stay tuned. If you have any new ideas or recommendations for next year, please email mountainviewpac740@gmail.com and/or speak to any of our executives.
- **Gaming Grant Application for 2026/27**
Thanks to our Treasurers (Marie and Radu) for working on the BC Gaming Grant Application for 2026/27. Each year PAC is entitled to a grant (approx. \$3000) from the government and deadline is June 30. The team will work on submitting this as soon as possible.
- **2026/27 PAC Planner Inserts**
Shoutout to Miriam and Kelly for working on the PAC planner inserts. Work is underway and the team aims to submit final design to the school by May 15.
- **In-Person Promotion of PAC and AGM**

With the success of April 8th PAC info table before school to promote for April's PAC and Parent Education Session, we hope everyone enjoyed a chance to connect that morning over a cup of fresh coffee. We hope to host another in-person PAC and AGM promotion, along with our May 7th Parent Education Series afterschool on Thursday, May 7th. We hope to see you all there!

- **Bulletin Board Quotes – In Progress**

Thank you to Madiha for taking on this initiative and she is in the progress of obtaining quotes from various vendors. We hope to revisit this in the new school year. This is for outdoor use as a way for parents to seek information and updates from PAC.

- **Playground Project Update – Refer to Appendix A for details.**

We have now received both updated quotes from Habitat Systems (vendor) and the District has confirmed what costs are covered by the District and which items PAC will be responsible for. As for benches and placement for them, a separate meeting will be required from the vendor and District. Once PAC determines number of swing sets and benches we would like to fundraise for and include in this project, we will kick off our fundraising campaign.

As of right now, we have received \$5,000 donations from Royal Canadian Legion and will be receiving another \$5,000 from them later in April. We are extremely grateful and PAC will work with the school to have students sign a frame as a token of thank you.

8. VOTE ON PLAYGROUND PROJECT DETAILS

Refer to Appendix A for details.

| VOTE 1: DECIDE ON NUMBER OF SWING SETS | | | | | | |
|--|----------------------------------|---------------------------|---|---------------------|----------------------------|--------------------------|
| Option A: | One Additional Swing Set | | | | | |
| | Quoted Total: | \$20,159.20 | | | | |
| | Available PAC Funds for Project: | \$13,000.00 | (Approx \$6K from Canadian Royal Legion / Current Savings + \$7K from Gaming Account) | | | |
| | Estimated Fundraising Required: | \$7,159.20 | (Quoted Total MINUS Available PAC Funds) | | | |
| Option B: | Two Additional Swing Sets | | | | | |
| | Quoted Total: | \$24,728.80 | | | | |
| | Available PAC Funds for Project: | \$13,000.00 | (Approx \$6K from Canadian Royal Legion / Current Savings + \$7K from Gaming Account) | | | |
| | Estimated Fundraising Required: | \$11,728.80 | (Quoted Total MINUS Available PAC Funds) | | | |
| VOTE 2: DECIDE ON NUMBER OF BENCHES | | | | | | |
| | | | (TOTAL - \$13K) | | | (TOTAL - \$13K) |
| | 1 Swing Set | TOTAL with 1 Swing | Fundraising Req'd | 2 Swing Sets | TOTAL with 2 Swings | Fundraising Req'd |
| No benches | \$20,159.20 | \$20,159.20 | \$7,159.20 | \$24,728.80 | \$24,728.80 | \$11,728.80 |
| 1 bench | \$20,159.20 | \$22,154.20 | \$9,154.20 | \$24,728.80 | \$26,723.80 | \$13,723.80 |
| 2 benches | \$20,159.20 | \$24,149.20 | \$11,149.20 | \$24,728.80 | \$28,718.80 | \$15,718.80 |
| 3 benches | \$20,159.20 | \$26,144.20 | \$13,144.20 | \$24,728.80 | \$30,713.80 | \$17,713.80 |
| 4 benches | \$20,159.20 | \$28,139.20 | \$15,139.20 | \$24,728.80 | \$32,708.80 | \$19,708.80 |

VOTE #1: Number of Swing Set(s)

Option A 1 Swing Set: 3 Votes

Option B 2 Swing Sets: 8 Votes

VOTE #2: Number of Benches

No Benches: 0

1 bench: 7

2 benches: 0

3 benches: 0

4 benches: 0

RESULTS: Two Swing Sets w/ 1 Bench

Shirley will update the School admin accordingly to proceed with next steps through the District. Shirley will also work with the school to set up donation links through Cash Online to launch our fundraising campaign.

9. VOTE ON \$1,000 TOWARDS SCHOOLWIDE FIELD TRIP ADMISSION FEES

The school has arranged for an end of the year schoolwide field trip to the Burnaby Village Museum. The school will cover costs for busses, however, will not cover admission fees. It is estimated at reduced rate of \$5.90 per student with approximately 170 students. So it will cost approximately \$1,000 to cover admission fees for all students. Otherwise, parents will be required to pay for admission fees.

Given that PAC had voted at February's meeting to no longer cover costs for student planners, this gives PAC \$1,000 in savings and can be used towards the admission fees that will benefit all students.

A motion made by Shirley to cast a vote to decide if PAC will cover admission fees for the year end field trip to Burnaby Village Museum.

Option 1: Yes, contribute \$1,000 to cover admission fees

Option 2: No, do not contribute for admission fees.

RESULT of 7 votes for Option 1 and 2 votes for Option 2.

Shirley will inform the school of our results accordingly.

10. VOTE ON FUNDS RAISED FROM COUPON BOOKS TOWARDS TRACK & FIELD

Refer to Appendix B for the detailed proposal submitted by Kelly S.

A motion made by Shirley to cast a vote to decide if PAC would like to assign funds raised from Coupon Books Fundraiser that Kelly had coordinated to be used towards a celebration party for Track and Field and/or other items to increase school spirit.

RESULT of 12 votes for in favor and 0 votes for opposed.

11. VOTE ON HONORARIUM FOR MAY 7 CHILDREN OF THE STREET WORKSHOP

Madiha, who helped us schedule the parent speaker sessions, would like to propose PAC to discuss and decide if honorarium is possible for the upcoming May 7th session. The online site allows for any amounts ranging from \$25 - \$200, or 'Other'. Although, the speaker confirmed that these workshops are offered for free, honorarium is optional.

VOTE #1: If PAC would like to provide honorarium for the upcoming May 7th speaker.

RESULT of 8 votes for in favor and 3 votes for opposed.

VOTE #2 (if in favor): Discussed possible amounts only \$25 amount was an option, hence no vote took place as there was no objections to this amount.

RESULT of \$25 amount as honorarium.

12. DISCUSS USE OF \$500 COMMUNITY EVENT FUNDS FOR END OF YEAR EVENT

Refer to Appendix C for details.

Unfortunately, Shirley was unable to secure \$1,000 funding from United Way Local Love Funds, similar to last year. Instead, she is looking to still organize a community event at the YMCA Bettie Allard 3rd floor for an end of the year event with the current budgeted \$500 for unplanned community events. She presented her initial idea and requested for feedback.

Date TBC – June 8 (3:00pm – 6:00pm)

Dilara and Madiha volunteered to help lead event.

13. 2025/26 PAC EVENT PLANS & UPDATES:

- **Fundraiser Results & Updates:**

- **White Caps Fundraiser (April 11) for 4:30 pm Game – Radu P.**

Total of 29 tickets were sold, helping PAC raise over \$200! Thank you Radu for coordinating and for all the families that supported this fundraiser.

- **Community Coupon Books (Deadline May 31) – Kelly S.**

Deadline extended until May 31. Sales are still going strong. Thank you Kelly for organizing and helping us support local businesses.

- **MV Swag Fundraiser (TBD) – Shirley & John**

After reviewing various vendors, we would like to move forward with Brand and Ink. Shirley briefly went over details on items selected, approximate costs and PAC contributions to collect feedback prior to proceeding.

Refer to Appendix D for details.

- **TCBY Frozen Yogurt Fundraise (Date in May TBC) – Dilara**

- **Freezie Sales (June) – Lead: Miriam – every Friday in June.**

- **Como Lake Relays (Apr 15) – Event Leads: Kelly S. / Madiha K.**

Thank you to Kelly and Madiha for hosting and leading the weekend training sessions. It has created such a wonderful community outside of school.

- **Parent Education Series #2: Keeping Kids Safe Online (May 7th at 8pm) – Event Lead: Madiha K.**

Thank you Madiha for helping us arranging parent education series and a total of two speakers! Please join us on May 7th at 8pm for another parent workshop. Stay tuned for details.

- **Spring Craft Activity (April/May) – Event Leads: Shirley L. / Dilara L.**

Shirley has worked with Ms. Reynolds to determine quantities and materials required for the air-dry clay project. Purchases have been made online and will deliver to the school once they arrive. The teachers will be completing this project between end of

April to end of May. Teachers will reach out directly to their class parents if volunteers are requested to help support the activity.

- **Welcome to Kindergarten (May 8) – Event Lead: Shirley L.**
PAC will host a raffle draw with the Purdy’s chocolates we received recently to engage and collect contacts from incoming new families along with hosting a PAC info table and a presentation from Shirley. 20 families are currently signed up to join in September.
- **Track & Field (May) – Event Lead: Kelly S.**
Teachers will send home forms and event training will begin after receiving forms.
- **Activity Day (June) – Event Lead: John P.**
Mrs. Lauren Banico will be the school’s point of contact for PAC this year. There has been a request to see if PAC can lead all 7 stations. Let us know if you’re interested.

The school has also suggested using the Multipurpose room as a space for parents to connect throughout the day during recess and lunch breaks.

- **Grade 5 Leaving Ceremony & Graduation (June) – Lead: Radu**
Planning committee will send out one last survey to help decide on a celebration activity outside of school hours. PAC will continue to provide lunch after the leaving ceremony and gift to all the grads.
- **Teacher Appreciation (June) – Event Lead: Shirley L.**
Given \$250 budget this year with about 24 staff members, Shirley plans on getting them \$10 Indigo gift cards this year along with a small plant plus card.
- **Community Picnic (June) – Lead: Dilara L.**
Dates TBD
- **Community Event (Mon, June 8 at 3pm) – Event Lead: Shirley L.**
As discussed in meeting agenda item #12. Stay tuned for more details and save the date for Mon, June 8 from 3pm – 6pm at YMCA Bettie Allard.

14. QUESTIONS.

None.

15. ADJOURNMENT

The meeting was adjourned at **9:46 PM.**

Motion was made by Dilara seconded by Madiha to end the adjourn the meeting.

CARRIED

Thank you to everyone for their participation.

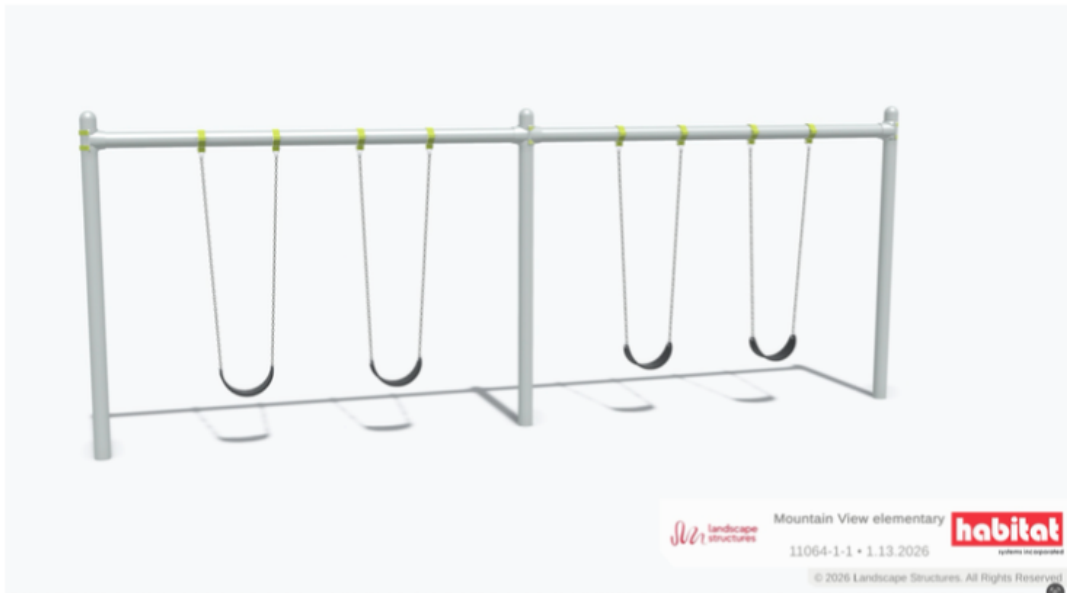
APPENDIX A: Playground Project Updates

Playground Project Updates as of April 1, 2026

PAC has obtained detailed quote from the District along with Habitat Systems to confirm the actual costs covered or responsible from the vendor vs the District. Please note that a firm quote will be obtained after PAC informs the respective parties regarding our decision (# of swing sets and benches) for this project.

| Updated Playground Project Quote Details - March 6, 2026 | | | | |
|--|------------------------------|----------------------|---------------------|--|
| ONE Swing Set | | | | |
| | Responsible | Updated Quote | Tax Required | Details provided by Jeb Perry (Manager, Grounds, SD43) |
| Swing Set and Freight | Habitat Systems | \$4,935.00 | Yes - GST | |
| Install and Security Fencing | Habitat Systems | \$5,269.00 | Yes - GST | |
| Remove and Dispose Existing Wood Fiber | District / Grounds | \$9,445.00 | No | No Tax for the District portion as confirmed by Jeb Perry (Manager, Grounds) |
| Supply and Install New Wood Fiber | District / Grounds | | No | |
| Extension of Play Box | District / Grounds | \$0.00 | No | The extension of the play box will be done as a repair by the district until such time as we can replace with concrete. There will not be a charge for the repair. |
| | Subtotal | \$19,649.00 | | |
| | Tax | \$510.20 | | |
| | Total - 1 Swing Only | \$20,159.20 | | |
| TWO Swing Sets | | | | |
| | Responsible | Updated Quote | Tax Required | |
| Swing Set and Freight | Habitat Systems | \$8,219.00 | Yes - GST | |
| Install and Security Fencing | Habitat Systems | \$6,337.00 | Yes - GST | |
| Remove and Dispose Existing Wood Fiber | District / Grounds | \$9,445.00 | No | There will be a slight savings if we're going with 1 swing set. But this is the quote for 2 swing sets. |
| Supply and Install New Wood Fiber | District / Grounds | | No | |
| Extension of Play Box | District / Grounds | \$0.00 | No | |
| | Subtotal | \$24,001.00 | | |
| | Tax | \$727.80 | | |
| | Total - 2 Swings Only | \$24,728.80 | | |
| BENCHES | | | | |
| TenderTuff with backrest NO armrest | | | | |
| | Responsible | Updated Quote | Tax Required | |
| Supply and delivery | Habitat Systems | \$1,600.00 | Yes - GST | |
| Install (per bench) | Habitat Systems | \$300.00 | Yes - GST | |
| | Subtotal | \$1,900.00 | | |
| | Tax | \$95.00 | | |
| | Total for 1 bench | \$1,995.00 | | |
| | 2 benches | \$3,990.00 | | |
| | 3 benches | \$5,985.00 | | |
| | 4 benches | \$7,980.00 | | |

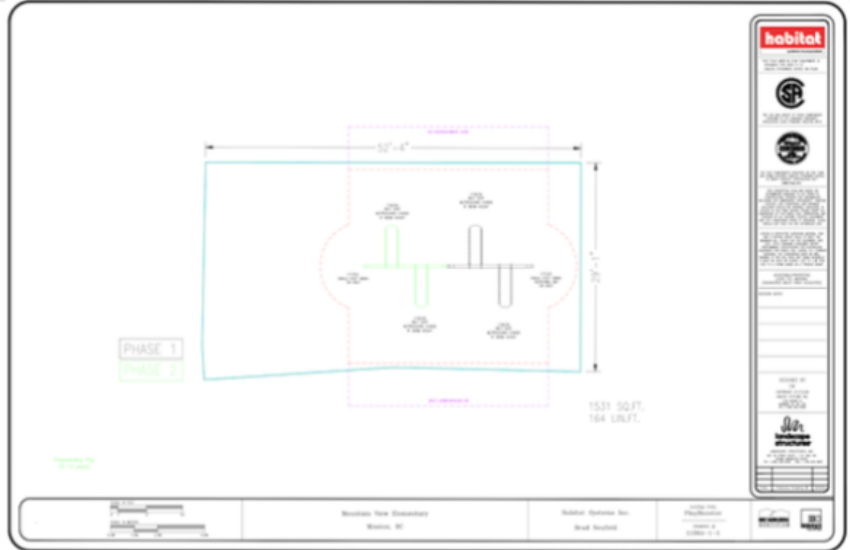
Single Post Swing Set Frame with Belted Seats



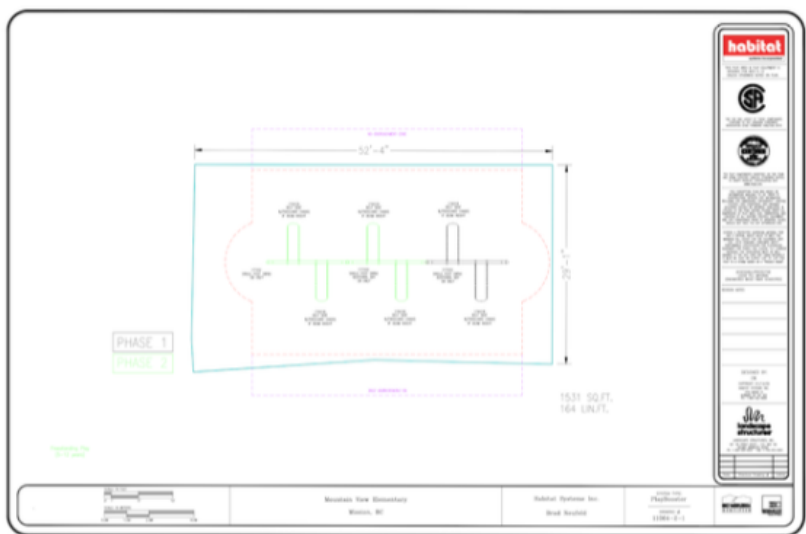

 Mountain View elementary
 11064-1-1 • 1.13.2026


 © 2026 Landscape Structures. All Rights Reserved

ONE Additional Swing Set Layout



TWO Additional Swing Sets Layout



Bench - Tendertuff (backrest with NO arm rest)



TenderTuff™ Bench

Model #141683

\$1,000 - \$2,300

Available in 72" or 92" length, with or without back and armrest(s); TenderTuff-coated perforated steel with roll-formed edges for comfort and durability; direct bury or surface mount.

VOTE PROPOSED AT APRIL 14, 2026 PAC MEETING

| VOTE 1: DECIDE ON NUMBER OF SWING SETS | | | | | | | |
|---|----------------------------------|--------------------|---|--------------------------|---------------------|----------------------------|--------------------------|
| Option A: | One Additional Swing Set | | | | | | |
| | Quoted Total: | \$20,159.20 | | | | | |
| | Available PAC Funds for Project: | \$13,000.00 | (Approx \$6K from Canadian Royal Legion / Current Savings + \$7K from Gaming Account) | | | | |
| | Estimated Fundraising Required: | \$7,159.20 | (Quoted Total MINUS Available PAC Funds) | | | | |
| Option B: | Two Additional Swing Sets | | | | | | |
| | Quoted Total: | \$24,728.80 | | | | | |
| | Available PAC Funds for Project: | \$13,000.00 | (Approx \$6K from Canadian Royal Legion / Current Savings + \$7K from Gaming Account) | | | | |
| | Estimated Fundraising Required: | \$11,728.80 | (Quoted Total MINUS Available PAC Funds) | | | | |
| VOTE 2: DECIDE ON NUMBER OF BENCHES | | | | | | | |
| | | | (TOTAL - \$13K) | | | (TOTAL - \$13K) | |
| | | 1 Swing Set | TOTAL with 1 Swing | Fundraising Req'd | 2 Swing Sets | TOTAL with 2 Swings | Fundraising Req'd |
| No benches | | \$20,159.20 | \$20,159.20 | \$7,159.20 | \$24,728.80 | \$24,728.80 | \$11,728.80 |
| 1 bench | | \$20,159.20 | \$22,154.20 | \$9,154.20 | \$24,728.80 | \$26,723.80 | \$13,723.80 |
| 2 benches | | \$20,159.20 | \$24,149.20 | \$11,149.20 | \$24,728.80 | \$28,718.80 | \$15,718.80 |
| 3 benches | | \$20,159.20 | \$26,144.20 | \$13,144.20 | \$24,728.80 | \$30,713.80 | \$17,713.80 |
| 4 benches | | \$20,159.20 | \$28,139.20 | \$15,139.20 | \$24,728.80 | \$32,708.80 | \$19,708.80 |

APPENDIX B: Track & Field Fundraising Proposal

March 3, 2026

Proposal to PAC: Allocating Community Values Fundraising Proceeds to Track & Field

I would like to propose that the funds raised through the Community Values Coupon Book fundraiser be directed to support our Track & Field Party.

This year is very exciting as the teachers reached out directly to PAC to engage parent volunteers to help with training. With this added support, our students are benefiting from more coaching, encouragement, and structured practice.

To continue building on this momentum, I plan to host a celebration party at the end of the Track & Field season. This event will be open to all participants, including students who trained and tried out even if they did not make the final team. Their effort, commitment, and willingness to challenge themselves deserve to be recognized.

Directing the fundraising proceeds to Track & Field will help us:

- Support training needs
- Celebrate student effort and teamwork
- Strengthening an event that is growing in both participation and spirit
- Demonstrate how PAC continues to support students in meaningful, inclusive ways

I believe this initiative reflects the values of our school community and showcases PAC's ongoing commitment to student development and well-being.

Thank you for your time and consideration.

Kelly Shum

APPENDIX C: Community Event Details

End of Year Community Event – Initial Planning

Prepared by: Shirley L., PAC President

PAC has **\$500 allocated** in the 2025/26 budget under “*Event – Community & Other Unplanned.*” As external funding from the United Way Local Love Fund (which supported last year’s event with \$1,000) was not secured this year, the following outlines a proposed use of these funds for a year-end community event.

Event Details

- **Venue:** YMCA Bettie Allard (3rd Floor, max capacity: 125)
- **Date:** Monday, June 8
- **Time:** 3:00 PM – 6:00 PM

Objective

The goal of this event is to provide an additional opportunity for families to connect and build community. While a Community Picnic is also being planned, this event offers an alternative indoor option to encourage broader participation and accessibility.

Audience

Invitations will be extended to:

- Current school families
- School staff
- Incoming Kindergarten families (contacts collected from the May “Welcome to Kindergarten” event)

Activities:

The following outlines possible activities, but not limited to:

- Face painting
- Arts & Crafts
- Light snacks and refreshments
- Photo Booth
- Screen / Monitor to display PAC events and pictures
- PAC Table – To allow parents to inquire about our operations, becoming an executive, and/or donate

Budget:

| | | | | | |
|------------------------|-----------------|------------------------------------|-------------|----------|----------|
| Venue Rental (\$20/hr) | \$60.00 | 3 hour booking | | | |
| Photobooth | Free | Sponsored by John (VP) / ImageCube | | | |
| Face Painting | Free | Sponsored by YMCA | | | |
| Arts & Crafts | \$200.00 | Crayola Cosmic Dough | \$40 for 20 | 100 kids | \$200.00 |
| | | Crayola Air Clay Packs | \$77 for 78 | 150 kids | \$154.00 |
| Drinks & refreshments | \$240.00 | | | | |
| TOTAL: | \$500.00 | | | | |

APPENDIX D: MV Swag Fundraiser

MV Swag Fundraiser Details – Vendor: Brand and Ink

Below is the pricing structure that **Brand and Ink** can offer for the Mountain View spirit wear program to cover production, store setup, payment processing, packaging, and the PAC fundraising contribution:

- **T-Shirt – \$20**
PAC Fundraising Contribution: \$4 per item
- **Long Sleeve Tee – \$28**
PAC Fundraising Contribution: \$5 per item
- **Crewneck Sweatshirt – \$34**
PAC Fundraising Contribution: \$6 per item
- **Hoodie – \$44**
PAC Fundraising Contribution: \$8 per item
- **Hat – \$20**
PAC Fundraising Contribution: \$4 per item
- **Cinch / Drawstring Bag – \$16**
PAC Fundraising Contribution: \$3 per item



All pricing applies to both youth and adult sizes. Extended sizes (2XL and above) may have a small additional charge depending on the garment.

To keep the program simple and maintain family-friendly pricing, we will proceed with **one logo layout option** for the apparel rather than offering multiple imprint placements.

Order Packaging & Distribution

Once the store closes and production is completed, each family's order will be **packed and labelled individually**, making distribution much easier for the PAC when items arrive at the school.

Production Timeline

After the ordering window closes, production typically requires **approximately three weeks**, after which all orders are delivered together to the school.

The online store itself can remain open for whatever ordering window the PAC prefers (most schools run it for about **3–4 weeks** to give families enough time to place their orders).

Contact: Karim Dharamshi / karim@brandandink.com