

Important Information – Please Translate

這是一份重要資訊 — 請找人為您翻譯 這是一份重要信息 — 請找人為您翻譯

Mahalagang Impormasyon - Paki salin sa sariling wika

Thông tin quan trọng - Xin tìm phiên dịch

ਮਹੱਤਵਪੂਰਨ ਜਾਣਕਾਰੀ-ਮਿਹਰਬਾਨੀ ਕਰਕੇ ਅਨੁਵਾਦ ਕਰੋ/ਕਰਵਾਓ

महत्वपूर्ण जानकारी - कृपया अनुवाद करें 중요한 정보 - 번역 부탁드립니다

Información importante - Por favor traducir معلومات مهمة - الرجاء الترجمة

重要な情報-翻訳してください اطلاعات مهم - لطفا ترجمه کنید



MOODY ELEMENTARY SCHOOL

2717 St. Johns Street

Port Moody, B.C.V3H 2B8

Telephone: 604 936-0478

August 28, 2020

Dear Parents,

Our school is getting ready to welcome students back to school in a safe and controlled manner. The Ministry of Education announced that BC schools will open in Stage 2 where students are encouraged to attend daily as schools will not be able to provide the remote learning options that we did in June. The first day of school for students is Thursday, September 10th. You can read more here:

<https://www2.gov.bc.ca/assets/gov/education/administration/kindergarten-to-grade-12/safe-caring-orderly/k-12-education-restart-plan.pdf>. On Tuesday, September 8th and Wednesday, September 9th staff will be reviewing and implementing safety procedures within the school.

The Ministry also has a site with information for parents: <https://www2.gov.bc.ca/gov/content/education-training/k-12/covid-19-return-to-school>

We have worked under the guidance of public health authorities and the Ministry of Education to develop a plan so that students and staff can learn and work together safely. We are ready to welcome your child back to school. We will strive to keep learning as the focus, but school *will* look different as health and safety are critical factors in our planning. Below is a brief summary of some of the actions taken to safely restart school this September.

Health and Safety

- Daily health screening check for students (by parents) and staff before arriving at school.
- Students who are ill (cold, flu or [showing Covid-19 symptoms](#)) must stay home. If a child becomes ill during the school day, they will be isolated from their Learning Group/class and the parents contacted to come and pick up as soon as possible.
- Families arriving from outside of Canada must self-isolate for 14 days before entering school.
- There will be enhanced cleaning protocols especially focused on high touch points (doorknobs, faucets, etc.)
- Teachers will be encouraged to take their class outside more frequently.
- A staggered schedule will be adopted to promote physical distancing at lunch times.
- There will be no large gatherings (assemblies, special events, open house) at this time.
- Elementary students are welcome to wear a mask, but it is not mandatory at this time.
- No sharing of food or drink.
- Parents and visitors **must make an appointment** to meet with staff. There will be limited access to the building by parents and visitors. All visitors must sign in at the office for the purpose of contact tracing. Virtual meetings will be an option for staff and parents.

- We also ask parents to also practice physical distancing (staying apart 2m) when on school grounds. This is for your safety and good modeling for our students.

Learning Groups

- A [Learning Group](#) is defined as a group of students and staff who remain together for an extended period of time and who interact primarily with each other.
 - In the Coquitlam School District, the Learning Group will include your child's classmates and any staff assigned to work with the students on a regular basis, like your child's teacher.
 - Within the learning group, while there will be less opportunities to physically distance, physical contact will be discouraged.
 - The learning group will stay together. Students will learn, eat and play together.
 - Class size limits have not changed, therefore a kindergarten class will have no more than 22 students along with the staff who work regularly with the classroom; a primary class with no more than 24; and an intermediate class with no more than 30 students in the group.
 - The Ministry of Education has stated that Learning Groups cannot exceed 60 people at elementary school. Therefore, our Learning Group sizes are well under the provincial limits outlined in Stage 2. In most cases our Learning Groups will be kept well below 60.
- Morning, recess, lunch and afterschool schedules and routines will be adjusted to keep Learning Groups apart as much as possible.
- If children interact with students or staff from other learning groups, they will be expected to practice physical distancing wherever possible and not engage in physical contact. In some cases, specialist teachers who work with children from different learning groups (ie. Learning assistance or English as a Second Language) will wear a mask if physical distancing is challenging.
- Parents and students will learn who their child's teacher and Learning Groups/class is before school begins on Monday, September 14th. We expect Learning Groups to be finalized and students attending full days beginning September 14th.

Educational Programming

- Our school will be focused on in-class instruction during stage 2.
- Students will spend most of their educational time in their classroom, as there will be reduced movement of students between learning spaces.
- Student well-being will be guiding educators in planning and supporting the successful return of students to school.
- Students with disabilities/diverse abilities will continue to be supported by the goals outlined in their IEP.
- Regular health and safety practices (frequent hand washing) will take up some instructional time.
- There is an adjusted Welcome to Kindergarten schedule. See attached
- Students will continue to receive report cards.
- Parents of children who are medically diagnosed as immunocompromised by a physician should contact me by Tuesday, September 1st. The following links are provided for your reference:

<http://www.bccdc.ca/Health-Info-Site/Documents/COVID-19-IS-Children-FAQ-BCCH.pdf>

<http://www.bccdc.ca/Health-Professionals-Site/Documents/COVID19-easing-social-distancing-IS-children.pdf>

Moody Elementary School Specific information:

As always **pick up and drop off** at Moody Elementary is a challenge. Parking, even for a couple minutes is a task. This year it is particularly crucial that we all do our part to keep each other safe.

- In keeping with the physical distancing requirements, we ask that you park away from the school and walk here if at all possible
- Please keep away from the building so that students and staff can enter and exit safely.
- Drop off your child and leave as soon as possible to make room for others to drop off
- Stay in your vehicle if you can for pick up; if not please stay on the sidewalk or the outer edges of the field to collect your child.
- Please drop off and pick up and then leave the grounds as soon as to avoid groups from gathering

Bell Schedule

No change

Warning Bell: 8:45 am

School day begins 8:50 am

Recess begins 10:25 am

Recess ends 10:40 am

Lunch eat/play or play/eat 12:13 pm

Lunch switch bell eat/play or play/eat 12:35 pm

Lunch ends 12:59 pm

Student dismissal 2:45 pm

Breakfast Club: We will not be opening our Breakfast Club at this time

BC Fruit and Vegetable Program: Will continue (fruit/vegetables will be washed and given out to each child by the teacher).

Water Fountains: Water to the fountains is turned off therefore, students need to bring a water bottle every day.

Movement throughout the building:

Safety teaching/learning/reminders are posted throughout the building

Staff, and students will follow the stay to the right rule (lines and arrows on the floors are there for visual reminders).

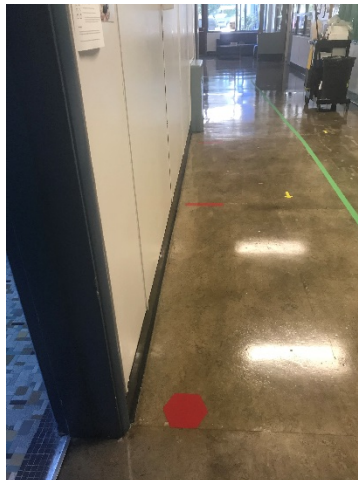
Classroom doors will be left open to minimize contact points.

Face Masks: are optional but, students who bring them will be encouraged to wear them when they are in any common areas or when two divisions/learning groups (under 60) are brought together on occasion.



Washing Hands: Students will wash their hands every time they enter or exit their classroom/school.

Washrooms: No more than two students in the washroom at a time. Center stalls and sinks are closed off and distancing waiting lines are outside in the halls.



Portable wash station →



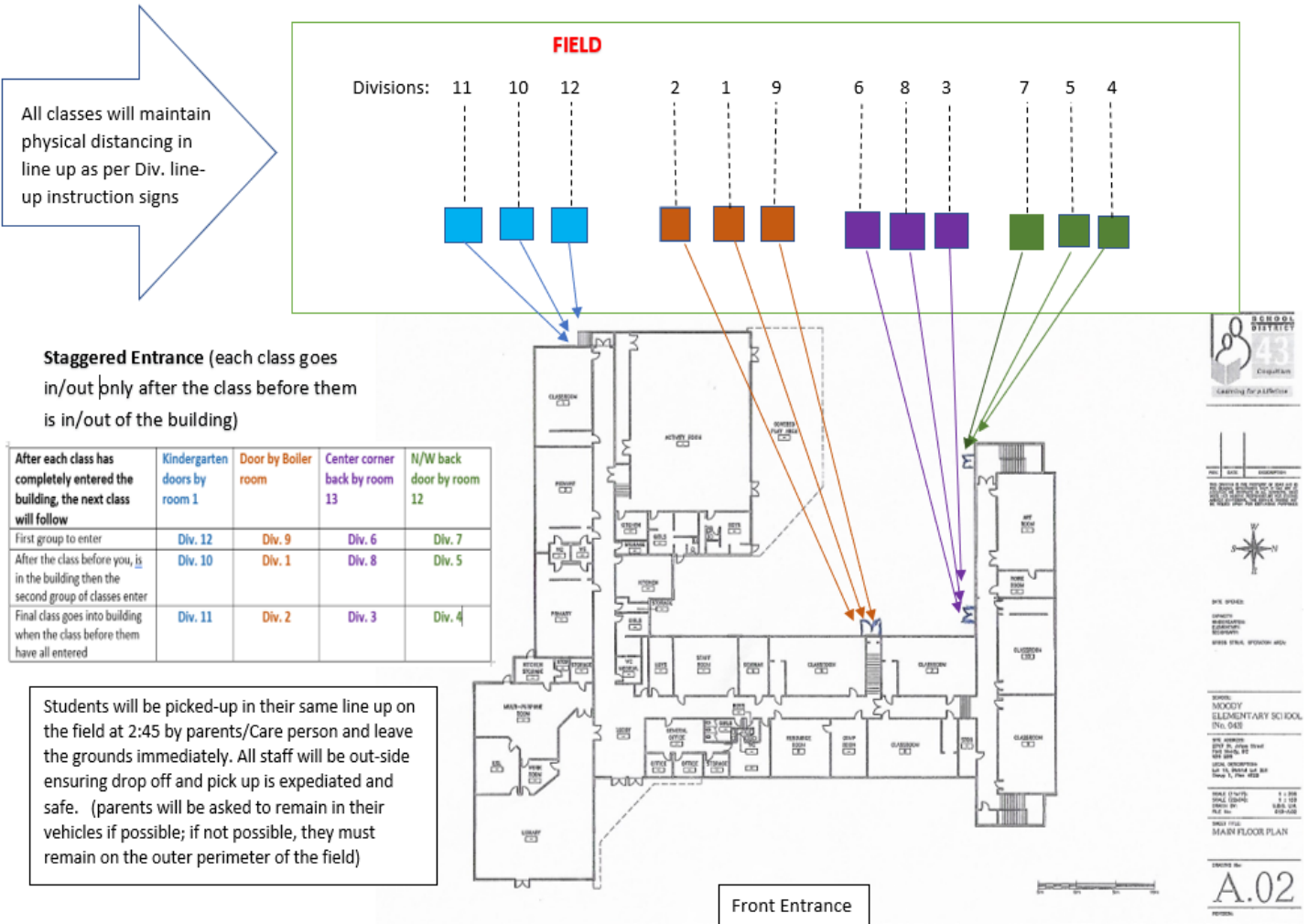
Line-Up Signage will be displayed on the field by **Grade** for Thursday Sept. 10th and Friday Sept. 11

Line-Up Signage will be displayed on the field by **Division** from **Monday, Sept. 14th** forward

Enter/Exit Plan, diagram and table:

Plan for students and staff entering and exiting the building, in the morning, at recess and lunch and at the end of the day: Classes/learning groups will always use their designated doors for entering and exiting the building. This diagram and the table below display the schedule for the weekly rotation of designated play areas for all divisions. The outside activity scheduled weekly rotation helps to maintain the continuity of Learning groups and maximize social distancing.

MOODY ELEMENTARY Entry/Exit Plan 2020/21



We look forward to welcoming students back to school on Thursday, September 10th. Following is the district plan for elementary students on Thursday, September 10th and Friday, September 11th:

- Thursday, September 10th: Students attend school for a welcome and enrolment count. Duration: 20 minutes.
- Friday, September 11th: Students will attend safety orientation sessions. Duration: 60 minutes. Schedule attached.

We will be reconnecting with children and completing an important health and safety orientation with them for the first week.

We need to know how many students are returning to school or what your plans are if you are choosing an alternative educational plan. ***It is critical that you complete the survey (link below) to give us this information.*** If you are choosing an alternate educational program, such as distributed learning or homeschooling, we cannot guarantee that your child can return to our school if you re-evaluate your plans later in the year. **Please contact me if you are undecided.**

I have included the link for the survey

<https://forms.office.com/Pages/ResponsePage.aspx?id=74xI2ZICUkKZJWRC3iSkSwfEofX9xG5Lsae2XWfj9XJUN0dJN01YR0xLM0dEVkICMFgwMFgwQTFKTy4u>

If you know someone who has school aged children and has moved into our neighbourhood, please encourage them to contact (phone or email) the school as soon as possible to arrange registration. Moody currently has limited space, so it is important that our catchment families register sooner than later.

Please note that the Provincial Health Officer and the Ministry of Education may decide to move to different stages in response to Covid-19 situation in British Columbia and we will inform you should this occur, advising next steps.

Please find attached a document for your review titled 'Stage 2 Health and Safety Protocols: K-12 – Parents'.

I will be following up with more information early next week.

I look forward to working with your family this year.

Take care of yourselves and keep safe

Sincerely, Deidre James

Moody PAC

From all of us at Moody Elementary Thank You for your dedication and caring.

Moody PAC is an integral part of our school community and is there to support the school, students and parents. Please get involved and remember they are there for all of us, Visit the following two links to subscribe to receive Moody Pac Newsletters and to open the first newsletter from PAC for this school year.

Here is the subscribe link for the PAC newsletter: <http://eepurl.com/gDnJNn>

And here is a link to the first newsletter: [Moody Elementary PAC Welcome Newsletter](#)