

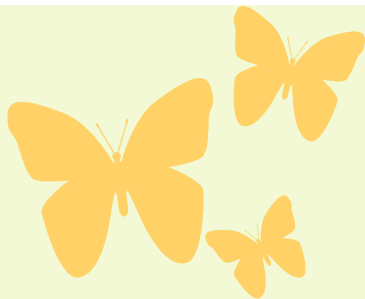
# LEIGH PAC



*We are parents working together toward a common goal – creating a better school and educational experience for our children!*

MAY 2014

Together We Accomplish More...



## Dates to note

- PAC Meeting – Wednesday, June 4<sup>th</sup>, 7:00pm – 9:00pm Leigh Library (babysitting available)
- Teacher Appreciation – May 27th
- Make-A-Wish Presentation – May 27th
- Spring Carnival – May 30<sup>th</sup>
- Hot Lunch – McDonald's – June 19th

## Inside

April PAC Update

1

Teacher Appreciation

1

Leigh PAC Elections

2

Spring Carnival

3

## MAY PAC Update

Leigh PAC is excited to announce the Snowflake Ball and Boy's night in a combined fundraising effort, **raised a total of \$1238** for the Make-A-Wish foundation. Our school will be recognized for these amazing efforts on May 27<sup>th</sup> during our assembly by the Make-A-Wish foundation. Our school will be presented with an "Adopt-a-Wish" plaque to hang in our school in recognition along with hearing how we have helped grant a "wish".

Interested in joining in on the planning for next year, e-mail [LeighPACinfo@gmail.com](mailto:LeighPACinfo@gmail.com) or attend a LPAC meeting.

### LEIGH PAC Meetings

Our final Leigh PAC meeting for the 2013/14 year, to be held on **June 4th 7:00pm – 9:00pm** in the Leigh Library.

All parents, guardians, teachers and staff are welcome to attend.

## Teacher Appreciation Luncheon

May 27th

Leigh PAC will be hosting the Annual Teacher Appreciation Luncheon this year on Tuesday, May 27<sup>th</sup>. Our theme "The Leigh Luau" and we are looking to parents who can donate a food item for the luncheon.

Help us "Thank" the teachers for all they do for our kids throughout the year.

Contact Ingrid Bahng, <mailto:bingrid@shaw.ca> if you can donate a food item.

## Leigh PAC 2014/15 Elections

LPAC elections for the 2014/15 school year were held on the May 7<sup>th</sup> general meeting.

LPAC would like to thank our current President **Natalie Walker** for taking charge of last year, and keeping us on track for the year. LPAC would also like to thank **Michelle Tuan** for all her hard work for the past few year, this past school year she assumed the Vice President role.

For the 2014/15 school year, we will have **Laura Cain** take on our President role and **Ingrid Bahng** take on Vice President. Both Laura and Ingrid have been very active with PAC in past years, and we look forward to them taking on these lead roles.

**Christine Cyr** our current Treasurer will remain our Treasurer for the next school year. **Kelli Forster** our current Secretary will also remain as Secretary for the next school year.

LPAC also wants to recognize and thank **Robyn Hollingshead** and **Christine Knoll** for all their hard work as the PAC Hot Lunch Coordinators. They will be missed as their kids move on to middle school. **Mary Lo-Sng** has taken over the PAC Hot Lunch Coordinator role for the 2014/115 year, with **Shelley Verbeek** taking care of the Munch-A-Lunch system.

Another thank you shout out to **Christine Knoll** for all her work implementing and maintaining the Fruit and Veggie Program over the years. **Lori Chow** will be taking over this role of Fruit and Veggie Program Coordinator.

We had many PAC roles not filled last year, that we are hoping to fill for the 2014/15 school season. One role unfilled was Fundraising Coordinator. **Shelley Verbeek** has stepped up to take this role on for the coming year. Shelley Verbeek had assumed the role of Communications Coordinator over the past year.

There are still many roles open for the 2014/2015 school year and would love to see some new faces and ideas brought to the table. We ask all parents or guardians to consider a role on the PAC for next year.

### Open Positions for 2014/2015 School Season

- District PAC Rep
- School Planning Council
- Minnehada Liason
- Communications Coordinator
- Parent Education Coordinator
- Traffic and Safety Coordinator
- Member at Large

If you are interested in any roles and would like more information please check out the Leigh Elementary School Parent Advisory Council Constitution. LPAC Constitution

Leigh PAC  
May 7th  
Elections

UPDATE

# Spring Carnival

Friday, May 30th

Munch-A-Lunch system is currently open for purchase of Punch Cards and Raffle tickets for our upcoming Spring Carnival. Pre-purchase of these items will be available on Munch-A-Lunch until May 28<sup>th</sup>.

Punch cards and Raffle tickets will be available for sale during the Carnival.

Food this year supplied by White Spot & San Remo Pizza. These vendors will not accept Punch Cards. San Remo will accept cash, and White Spot will accept cash, debit or credit card.

### Games

Bouncy Castle

Carnival Treats



### Raffle Tickets

Individual \$.50 or \$1 tickets  
or Bundle for \$9

Redeem for door prizes or Carnival Treats

### Game punch cards

Individual cards \$6  
or Bundle of 5 for \$24

Redeem punch cards for prizes

Order online at [MunchaLunch](#) or purchase at the event

### Food for sale by White Spot and San Remo

(White Spot accepts cash, debit and credit card  
San Remo is cash only)



### Prizes

Community Partners

Special Guest!

In support of a local family who lost everything to a household fire this year, at Carnival we will be collecting household goods for Developmental Disabilities Association. Proceeds from this fundraiser will be donated to the family so they may purchase replacement goods.



Join us for  
activities and fun  
for all the kids!

## Leigh Elementary 2014 Carnival

May 30<sup>th</sup>, 2014  
4:00 – 8:00 p.m.

Raffle draw starts @ 8 p.m.