



## Leigh PAC 2010-2011 March 1, 2011



### Dear Leigh Families

Well, it is hard to believe that we are heading off onto Spring Break already! Wow this year seems to be flying by.

The Leigh PAC has been busy this year with a number of fun social events, hot lunches and planning for the upcoming Carnival.

It has been nice to see some new faces at our monthly PAC meetings and would really like to thank those parents for stepping up and getting involved. Not only have Lori, Koreen, Michelle and Laura attended our meetings, they have all stepped up to take on some important roles on our PAC.

As she did last year, Laura Cain is running our Hot Lunch program with Stephanie Thompson and she also heads our Emergency Prep committee which works hard at the beginning of the year to ensure all our emergency supplies are current and well stocked.

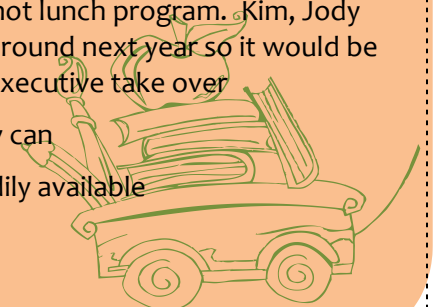
This year Michelle Tuan has taken on the role of Parent Education and we are very thankful for all her

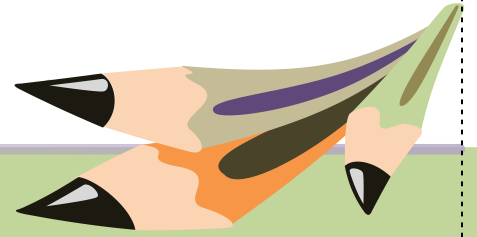
work putting on the Internet Safety Workshop. This is a very current topic of concern for parents these days!

Lori Daoust-Chow and Koreen Garafalo have both stepped up and joined our Carnival Committee and will be coordinating the classroom bundles for the great raffle baskets.

Looking forward to next year, the Leigh PAC is facing a bit of a dire situation. We have a number of moms who have been very involved in the PAC for many years who will no longer be parents at Leigh. We are losing some great parents as they move on to Middle School and High School. Tam Shepert, Chris Towers and Barb Mulligan are people who will truly be missed at Leigh. So please join us in thanking them for their many years of PAC involvement. Our children have benefited from their involvement over the years.

For the 2011-2012 year, our current PAC Chair Kim Egli will be stepping down as she has completed her 2 year maximum in the role. Tam Shepert who is Vice-Chair is moving on as her youngest son moves on to Middle School. Jody Ewart, who has been our Treasurer for many years will also be stepping down for her last year at Leigh. Tracy McRitchie will also be stepping down as Secretary and will focus on Grade 5 activities for her last year at Leigh. Janet Kampf, who has been instrumental in putting on some of the best Leigh social functions, will also be stepping down as fund-raising Chair. Stephanie Thompson will also be stepping down so we will need 2 new people to help coordinate the hot lunch program. Kim, Jody and Tracy will all be around next year so it would be ideal to have a new executive take over in September so they can have a year with readily available help and support.





So, Leigh Families, we are putting this notice out in hopes that some new families will make the decision to get involved in one way or another.

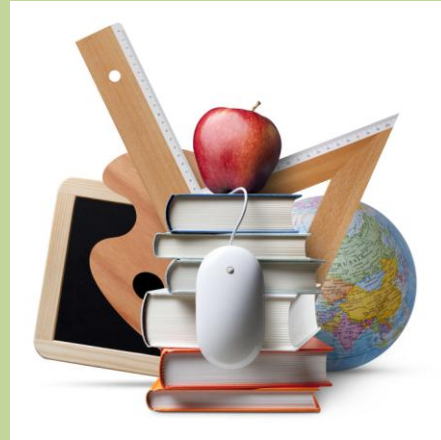
**Some things to think about are the following:**

The Leigh PAC receives \$20 per child as Gaming Funds each year and these funds are used to provide our children with outdoor toys, build playgrounds, purchase computer monitors and fund drama, art and dance programs in the school. We also fund the first day of school pancake breakfast, purchased a \$1500 Grade 1 Reading Program, we provide bus transportation so that each class can take a large field trip once per year and we provide the bus to transport the track & field team to the district meet . These things and so much more are funded through the gaming funds we receive each year. **If the PAC does not have an elected Chair, Treasurer and Secretary, these funds ARE NOT RECEIVED.** What a loss for the school!

In addition, we fund-raise as a school and use these funds to provide the teachers with classroom dollars that they can use as they see fit, purchase whiteboards for the classrooms, science supplies and much more. Most of you would not know this, but very regularly teachers must dip into their own pockets to pay for items they require in their classroom that are not provided by the district. As a PAC we feel strongly that such a practice should not happen and that is why each year we vote to give each teacher \$250 for their classroom. As an example, teachers have used these funds to purchase the large baggies you see coming home with your home reading program, purchase art & crafts for their classrooms and games for the kids during indoor days.

Our funds are raised through the hot lunch program we all enjoy, photo night, plant sale etc . These fund-raisers could not happen without the assistance of parents.

Getting involved does not mean you have to take an Executive Position (Chair, Vice-Chair, Treasurer, Secretary), it just means showing up once a month and helping the team to make decisions on how best to spend the PAC funds, help to address any concerns around the school (parking situation) and just pitch in when and where you can. The PAC executive positions are necessary but once again, with a strong team behind the executive, these roles do not need to take much of your time and resources.



Thank you for taking the time to read this update from the Leigh PAC and please give some serious thought to your own level of involvement at the school, what is important to your kids and what programs you would like to help ensure keep running for years to come.

Our first PAC meeting after Spring Break is on **Wednesday April 20<sup>th</sup>, 2011 at 7pm** in the Adult Ed Room. Rest assured these meetings are very casual but very informative. We look forward to seeing many new faces! We will then be holding elections for the 2011-2012 year on May 17, 2011.

Enjoy your Spring Break with your kids and we look forward to a very successful final term at Leigh.

Sincerely,

Leigh PAC

