

### DATES FOR THE CALENDAR:

- May 29—  
Carnival
- June 3,  
6:30pm— G5  
Leaving  
Committee  
Meeting
- June 3, 7pm—  
LPAC meeting
- June 11, 4pm—  
Mrs. Smith's  
Retirement  
Tea
- June 18—G5  
Leaving Event  
@ SFU
- June 19—Hot  
Lunch Pizza  
Day
- June 24—Last  
Day of School!

If you're not receiving notices via email and would like to, send an email to [Linda.lsisson@sd43.bc.ca](mailto:Linda.lsisson@sd43.bc.ca) with the word Linda's List in the subject line

## Thanks for a Great Year

Kathie and I would like to thank the PAC Executive, committee members, families, teachers, staff and admin at Leigh for making our term as Chairs such a great one. Your willingness to get involved, be creative and make a difference at our school helped us immensely as this year's PAC Co-Chairs.

The culture here at Leigh is one that many schools can only hope for. We are so fortunate that those who

work at Leigh give so freely of their time; in class and outside of it. Families appreciate the many hours that go into activities such as Student Council, the Terry Fox Run, special event assemblies and Spirit Days, Christmas concerts, food drives, class trips, website updating and newsletters, Music Monday, Gardening Club, Como Lake Relays, Maypole, Running Club, Basketball, Volleyball, Activity Day, Track & Field, supervising before/after

school, walking students to buses and monitoring the school crosswalk and drive-through. All this in addition to teaching and caring for our children!

I feel grateful to have worked (and played!) amongst such supportive, talented, creative and giving parents, and I will have many fond memories of my family's years at Leigh. Enjoy your summer break!

*Jennifer Henderson  
Leigh PAC Co-Chair*

## Carnival—this Friday!

### Friday, May 29th is Leigh's Spring Carnival!

Don't miss Leigh's biggest fundraising event of the year! Doors open at 4pm. There will be games, prizes, BBQ and full concession. Win fabulous raffle prizes including a \$500 cash prize, a 32" TV, PSP and games, digital camera, Ipod Nano, a \$200 Coquitlam Centre Gift

Certificate and Class Bundles, to name just a few.

New games this year, including Pony Rides and a Huge Inflatable Slide!!

Thanks to the Organizing Committee for the many hours they have put into planning this event, and the



many parents, students, family members, teachers and Mr. Cecchini who volunteered to help out on Friday! See you there!



June 19th—Pizza Day

# Hot Lunch Program

June 19th—Pizza Day

Helpers:

Tammy Eberle

Jody Ewart

Koreen Garofalo

Alison Habetler

Jennifer Henderson

Cindy Joseph

Cara Keefe

Kim Lauridsen

Lori Matthes

Tracy McRitchie

Diana Medeiros

Rhonda Radford

Tam Shepert

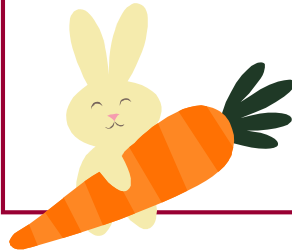
Sarita Stad

Jill Stewart

Chris Towers

Linda Winston

Thank you Gina Young and Janet Kampf for the many hours you spent this school year organizing Hot Lunch Days and Snack Days! We appreciate everything you do!



Thank you Christine Knoll for running the Fruit & Veggie Program again this year at Leigh. If your child is asking for new fruits or veggies, you know who to thank!

Thank you to Barb Mulligan for organizing the Plant Sale fundraiser, and to the many families for your support.

\$580 was raised for the school!



# Green Committee

Don't forget that the Gardening Club meets Wednesdays at noon. Parents are welcome to help students with their chores. Please contact Scott Young if you have any

questions 604 944-6214 or [Scott\\_T\\_Young@telus.net](mailto:Scott_T_Young@telus.net)

Thank you to Scott Young and the Green Committee who worked throughout

the year to research and introduce new green initiatives and projects at Leigh.

# PNE Play Passes



Leigh families and staff may use Leigh's Promotional Code which is posted at the school, or may be obtained by emailing leighpac@telus.net. Sorry—we are not allowed to post this code on our website. Visit the Group Sales Online Ticket

Program Events Web Page [www.pne.ca/groupsales](http://www.pne.ca/groupsales) to purchase discounted tickets for Playland, the Fair at the PNE, Fright Nights at Playland and other select special events held at the PNE, such as Disney on Ice and the world famous

Lipizzaner Stallions. tickets for the event of your choice. All Playland Season and One-Day PlayPasses are currently available for purchase online.

Playland Now Open Weekends & Holidays 10am to 6pm!!

## Welcome Back Movie Night



Thank you to Janet Kampf and her team of helpers for an incredible series of fun family movie nights this year.

Janet is already busy planning the first Movie Night of the

2009/10 school year—an outdoor welcome back movie night to be held on the first Friday back to school: Friday, September 11th. The show will begin 'at dusk' (8'ish), so bring along your lawn chairs and blankies and settle in with munchies from the snack bar.

Janet is looking for volunteers to help develop and plan this event further. Please contact her at 604-472-1424 or [rickjan@telus.net](mailto:rickjan@telus.net). We are also looking into possible partnerships for this event. Watch for more info on this exciting night to come home in June.

## Grade 5 Leaving Committee

The final meeting of the G5 Leaving Committee will be just before the PAC meeting on June 3rd at 6:30pm. Thank you to Tracy McRitchie who has been working so hard on the Year Book and Grade 5 DVD. The Year Book will be handed

out to students following the SFU event to give them time to collect autographs. The DVD will be given to all G5 students on the last day of school, and shown at the final assembly on June 24th. If your G5 will not be at school on June 24th,

please get in touch with Jennifer Henderson so we can make sure your child gets a copy of this wonderful keepsake (604-464-8449 or [j\\_henderson@telus.net](mailto:j_henderson@telus.net)).

**Thank you to Lori Matthes for all the work she put into Emergency Preparedness for the school this year. We appreciate all your efforts to help make sure our children will be safe in the event of an emergency.**

# Campbell's Soup Labels for Education



Thank you to Rob Stephenson for counting up over 3,000 soup labels sent in by Leigh families. With the points earned in this

program, the school will be able to purchase a new digital camera.

## Mrs. Smith's Retirement Tea

Mrs. Smith's Retirement Tea will be held on Thursday, June 11th at 4pm in the Leigh Gym. Please help spread the word to anyone who might like to attend this event.

Please be sure to respond to Mrs. Sisson's form sent via email on May 27th. Please note the quickly approaching deadline of Friday, June 5th!



## LPAC Elections

LPAC elections for the 2009/10 school year were held at the May 6th PAC meeting. We welcome Jody Ewart back to the position of Treasurer and Tracy McRitchie to the role of Secretary and Minnehada Liaison. Christine Knoll will coordinate the Fruit & Veggie program again next year, and Gina Young will continue to coordinate the Hot Lunch program.

We will continue to look for a new Chair(s) and Vice Chair, as well as SPC members and for someone to help Gina with the Hot Lunch program. Members at Large will be voted in at the September meeting to allow parents new to the school to get involved. The PAC cannot be established without a Chair and Vice Chair, which could mean that gaming funds will not be available to the group, as this

is a funding requirement.

Feel free to contact this year's Chairs: Kathie Metzner or Jennifer Henderson if you have any questions.

## Leigh Parent Advisory Council

### Co Chairs:

Kathie Metzner 942-9686 kmetzner@telus.net  
Jennifer Henderson 464-8449 j\_henderson@telus.net

### Vice Chair:

Tam Shepert 944-9310 lshPERT@shaw.ca

### Treasurer:

Jody Ewart 468-8454 jewart@shaw.ca

### Secretary:

Tricia Fung 944-4715 t.fung@telus.net

### Members at Large:

Pam Fletcher 942-2009 j&pffletcher@telus.net  
Christine Knoll 942-4711 acknoll@gmail.com  
Amber Morfitt 468-0502 atirado@shaw.ca  
Chris Towers 945-1907 drtowers@shaw.ca

### Hot Lunch:

Gina Young 944-6214 sgyoung@telus.net  
Janet Kampf 472-1424 rickjan@telus.net

### Fruit & Veggie Program:

Christine Knoll 942-4711 acknoll@gmail.com

### Emergency Preparedness:

Lori Matthes 464-2913 matthes@telus.net

### Movie Nights:

Janet Kampf 472-1424 rickjan@telus.net  
Barb Mulligan 945-7355 barb.mulligan@shaw.ca

### SPC:

Tam Shepert 944-9310 tamshePERT@shaw.ca  
Carol Wilson 464-3106 chw@shaw.ca  
Jen Smith 944-9175 lilyen78@hotmail.com

### Green Committee:

Scott Young 944-6214 scott\_t\_young@telus.net

### Playground Committee:

Amber Morfitt 468-0502 atirado@shaw.ca

## LPAC Meeting Agenda

Wednesday, June 3, 2009—7pm

### Introductions, Approval of Minutes

### Reports:

Treasurer's Report

Principal's Report

### Updates:

Motion to approve spending \$2700 on 30  
new computer monitors

Portable Air Conditioner

School Website

Campbells Labels for Education

Fruit & Veggie Program

Emergency Preparedness

Grade 5 Leaving Committee

Green Committee

Hot Lunch

Movie Night

Carnival

Minnehada Liaison

Retirement Tea for Jan Smith

Plant Sale

Parent Ed Workshop

PNE Play Passes

Elections Revisited

### New Business:

Teacher Appreciation Luncheon

2008/09 PAC Wrap Up event

September Meeting Date

Every effort will be made to adjourn  
the business meeting by 8:30pm

## Please obey the simple school driving safety rules:



Slow Down

Don't stop in the Cross Walk

Don't park in the Drop Off Zone

Don't block traffic or the school bus

Don't stop in No Stopping Zones



**It's up to us to set a good example for our children and keep them safe.**