



ÉCOLE GLENAYRE ELEMENTARY SCHOOL

495 Glencoe Drive, Port Moody, BC V3H 1G6 Ph: 604-939-9214

Website: www.sd43.bc.ca/glenayre Email: glenayre@sd43.bc.ca

Newsletter # 30

April 24, 2025

Upcoming Calendar Events

Fri, Apr 25 – Pro D Day

Wed, Apr 30 – Div 7&8 HR MacMillan Field Trip

Mon, May 5 – Staff Meeting
PAC Meeting 7:15pm

Tue, May 6 – Kindergarten early dismissal 12:00
Welcome to Kindergarten

Thurs, May 8 – French Film Festival
Hot Lunch – White Spot

Fri, May 9 – Glenayre Movie Night

Mon, May 12 - Div 1 Burnaby Lake Field Trip

Tues, May 13 – Panorama and Grade 5 photo

Wed, May 14 – PAC Treat Day
Div. 3 Firehall Field trip
Div 14 Watershed Field Trip

Thurs, May 15 - Div 4 Firehall Field trip
Div 14 Watershed Field Trip

Fri, May 16 – Pro D Day

Mon, May 19 – Victoria Day

Wed, May 21 – Hot Lunch – Subway

Thurs, May 22 – Track Meet

Wed, May 28 – Div 12 & 13 UBC Beaty Museum

Fri, May 30 – Parent Appreciation 8:15am
- Div. 7 Evergreen Cultural Ctr

Principally Speaking

I hope everyone enjoyed the extra-long Easter weekend. I know people that work in schools will agree that time seems to fly by extra fast once mid-April hits. We are in the beginning stages of planning for next year. If you know that you are not returning to Glenayre next year, please email the office and let us know so we can plan our staffing and classes accordingly.

Wednesday was Administrative Professionals Day. I would like to take a moment to recognize and thank Mrs. Gormann and Ms. Kiya for all their amazing work at Glenayre and for helping make our school community such a great place to play, work and learn.

Practices for Track and Field events started this week in anticipation of the District Track Meet on May 22nd. Thanks once again to our staff for volunteering to coach our students.

Monday is Election Day and Glenayre is a polling station. Traffic will be busier around the school than usual so please plan accordingly.

Have a great weekend,

Ms. A. Johnson, Principal



glenayrepac.wordpress.com

Questions for the PAC? Please contact:

General Inquiries:

glenayrepac@gmail.com

Treasurer Inquiries:

glenayrepactreasurer@gmail.com

Hot Lunch:

glenayrepalunch@gmail.com

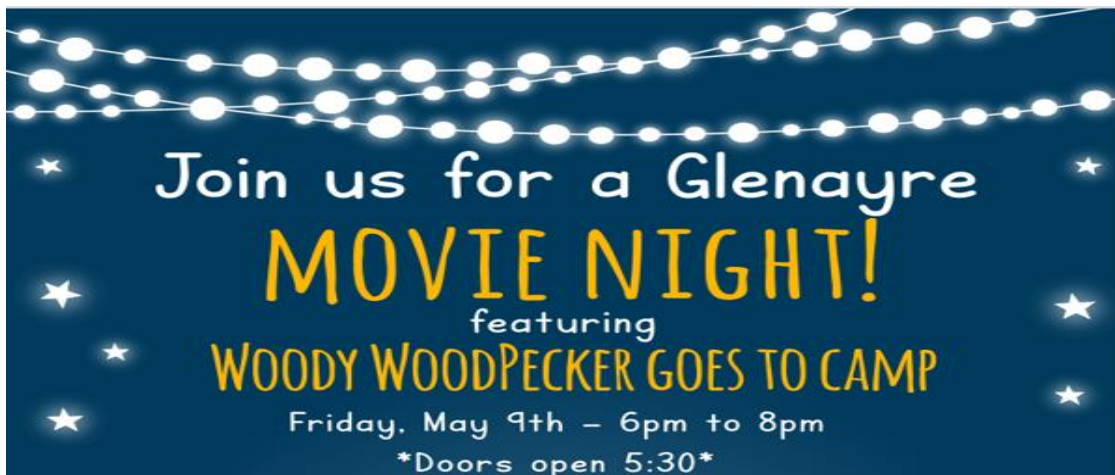
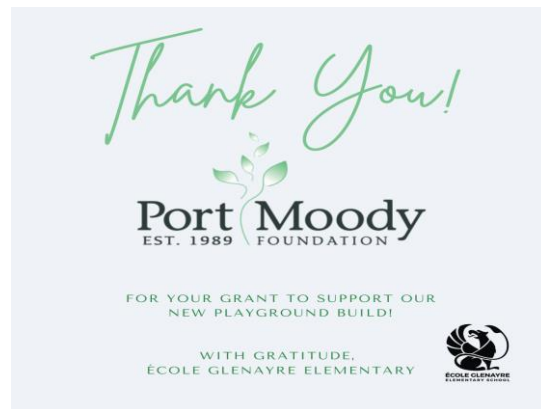
TODAY:



- ★ Get your tickets for our May 9th Movie Night
- ★ Sign up to help with our Teacher Appreciation Lunch
- ★ Sign up on lots-a-helping-hands to help with Carnival

PAC Power Hour: Thank you Playground Sponsors!!!!

★ We're incredibly grateful to the **Tire Stewardship of BC** and the **Port Moody Foundation** for each awarding us a grant to support us as we embark on building our new playground! Their generous support will help us ensure we have a safe, inclusive, and engaging space for the students and community of École Glenayre Elementary. Thank you for believing in our mission and making a real impact! ❤️





Order your tickets today at www.munchalunch.com



📢 **Volunteers needed:** As we gear up for our eagerly anticipated Spring Carnival, we're reaching out to the heart of our community: **you!** Please join us in creating a memorable and safe event for our students. Whether you can spare an hour or the entire day, your support will make a significant difference. It's an opportunity to bond with fellow parents, contribute to your child's school experience, and, most importantly, create lasting memories for our children. We will need close to 100 parent volunteers, all positions can be found on <https://www.lotsahelpinghands.com/c/630280/> under June 6th on the Calendar.

****Please ensure all your school volunteer forms are up to date. ****

 **Prize Donations:** Last year, we invited families to donate gently used stuffies, fidgets, tinker toys, and more as game prizes—and it was a huge hit with both kids and parents! This year, we're doing it again and need your help to keep the good vibes (and great prizes) going. Collection bins will be placed in the school lobby starting May 2nd. If you can support us with this, please drop off your items into one of the bins marked "Carnival" anytime after this date. We would like to thank you in advance for your support!

 **Sponsors:** A Friendly reminder that we are still looking for **SPONSORS!** Do you have a small business that might be able to help? Are you interested in sponsoring one of our bouncy castles, or carnival games? OR do you have a business that would be willing to donate to our raffle prizes? Please reach out to the PAC to learn more.

REMINDER: ALL of Glenayre is a 30 km/h zone.



STAY UP TO DATE

There are many events and activities at Glenayre offered through the PAC. The best way to stay current with PAC information is to:

1. Follow @glenayrepac on [Instagram](#) and [Facebook](#),
2. Subscribe to glenayrepac.wordpress.com to get updates straight to your inbox, and
3. Read this weekly school newsletter.

[Connect with us today!](#)

Fundraisers to Support the PAC all year long!

For more details, visit <https://glenayrepac.wordpress.com/ongoing-fundraisers/>.

Please share these great rebate programs with friends and family!

1. **PORT MOODY LIQUOR STORE:** Mention Glenayre Elementary at checkout and 5% of your purchase goes to the PAC.
2. **MABEL'S LABELS:** Shop online and the PAC earns a rebate.
3. **RVN WELLNESS (St Johns St):** Get a discount for yourself through the referral program. Enjoy family yoga and wellness while supporting a local business, and the PAC earns a rebate, too.

Attachments:

- 30.1 Playground Update
- 30.2 SD43 Summer Camps 2025
- 30.3 SD43 Summer Camps