



Configuring the Safe Exam Browser Lockdown Environment

This document includes instructions for configuring different devices to run assessments in a lockdown environment. For each operating system, the device configuration process is completed in two steps: the installation of the Safe Exam Browser and the configuration of that software.

Please note: If this is your first time using a lockdown environment or if your school has experienced issues with the SafeExamBrowser application (SEB) in previous administrations, we recommend using the KIOSK application instead of SEB. The instructions for configuring the KIOSK application can be found in the document named “Configuring the Kiosk Application on Chromebooks”.

The following sections will be covered:

Support Platforms	2
Important: If you are upgrading the SEB version, uninstall the old version before running the installer for the new version.	2
Configuring Windows Devices	3
Installing SEB on Windows	3
Loading the SEB Configuration File	4
Configuring Mac Devices	5
Installing the SEB on MacOS	5
Loading the SEB Configuration File	7
Configuring iPads	7

Important: If you are upgrading the SEB version, uninstall the old version before running the installer for the new version.

Support Platforms

Assessments can be configured to run on a variety of devices. Please consult the table below for more information.

Operating System	Supported Browser List
Windows (Microsoft)	Google Chrome – latest version Mozilla Firefox – latest version Microsoft Edge – latest version
Mac OSX 10.13.6+ High Sierra or higher (Apple, MacBook)	Safari – latest version Google Chrome – latest version Mozilla Firefox – latest version
Mac iOS (Apple, iPad)	Safari – latest version
Google Chrome (Chromebook)	Google Chrome – latest version

Please note: The minimum recommended screen resolution for the devices to run the assessments is 768 x 1024. This allows any device the size of an iPad Mini or larger to be used.

Important: If you are upgrading the SEB version, uninstall the old version before running the installer for the new version.

Configuring Windows Devices

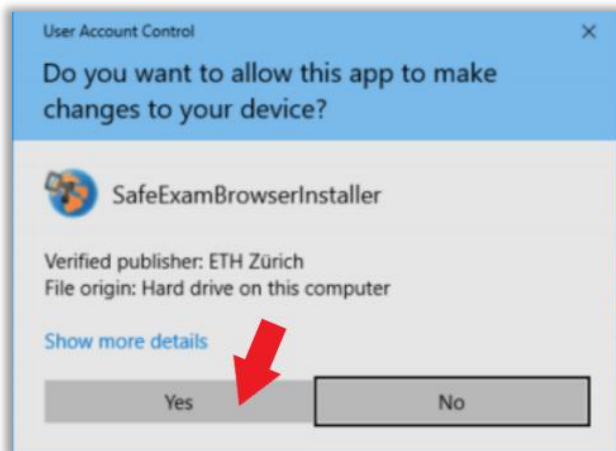
The assessments can only be accessed through the Safe Exam Browser (SEB) using a valid configuration file. The SEB is a specialized web browser that restricts students' access to external tools and resources while they are taking the assessment. The SEB configuration file regulates access to system functions, other applications, and other settings, while also pointing the SEB to the assessment and performing a special "handshake" to validate security.

Installing SEB on Windows

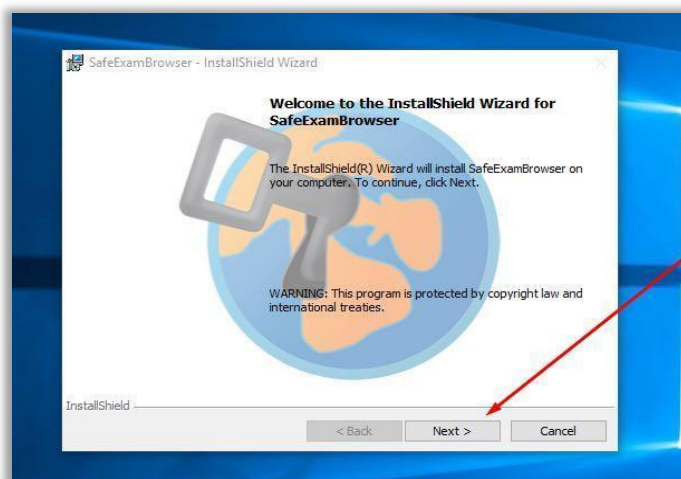
1. Download the Safe Exam Browser Installer from the SEB website at

[https://sourceforge.net/projects/seb/files/seb/SEB 3.8.0/SEB 3.8.0.742 SetupBundle.exe/download](https://sourceforge.net/projects/seb/files/seb/SEB%203.8.0/SEB%203.8.0.742%20SetupBundle.exe/download).

2. Once the download is complete, run the SafeExamBrowserInstaller.exe file to initiate the installation. You will be asked to allow the installation to make changes on your device. You must give this permission to proceed.



3. A window with an installation wizard will open. Click "Next" to proceed. Select "I accept the terms in the license agreement." Click "Install" and then "Finish".



4. Click “Start” and find the Safe Exam Browser to run the program.



5. The following alert may appear: “You have installed Safe Exam Browser (SEB), but it isn’t configured yet.” This indicates that the installation of the program is complete, but the program is not yet configured. Please see the section “Loading the SEB Configuration File” below.

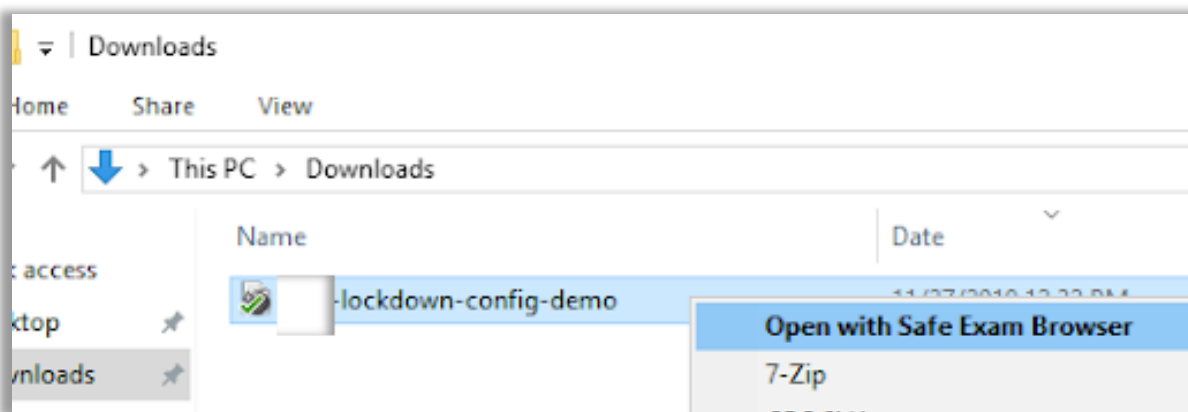


Loading the SEB Configuration File

To access the assessment, the system needs to be opened through the Safe Exam Browser using an SEB configuration file. This file opens to a login screen, which then opens directly to the assessment.

Please note: The SEB configuration file and its corresponding password need to be provided by technical support.

When setting up computers for the assessment, ensure all computers have the SEB opened before students begin. Please note that the software should not be opened directly. The SEB configuration file in the downloads folder must be double-clicked.



Configuring Mac Devices

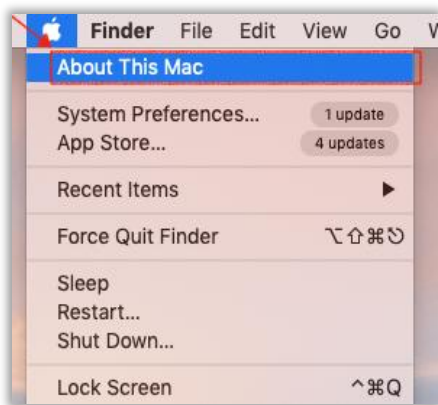
The assessments can only be accessed through the Safe Exam Browser (SEB) using a valid configuration file. The SEB is a specialized web browser that restricts students' access to external tools and resources while they are taking the assessment. The SEB configuration file regulates access to system functions, other applications, and other settings while also pointing the SEB to the assessment and performing a special "handshake" to validate security.

The SEB software can be downloaded for Mac and iPad through the following link:

https://sourceforge.net/projects/seb/files/seb-macosx/seb_macos_3.4.1/SafeExamBrowser-3.4.1.dmg/download.

Installing the SEB on MacOS

1. Navigate to the "About This Mac" menu in your system menu bar to see whether the device is compatible with the SEB.

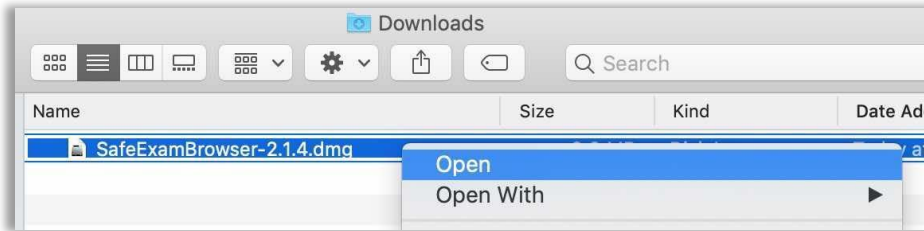


2. You will see a window listing the version of your operating system. The operating system must be higher than 10.13.6 to run the SEB for the assessment. In most cases, it is possible to upgrade the operating system at no cost, but it can take more than an hour.

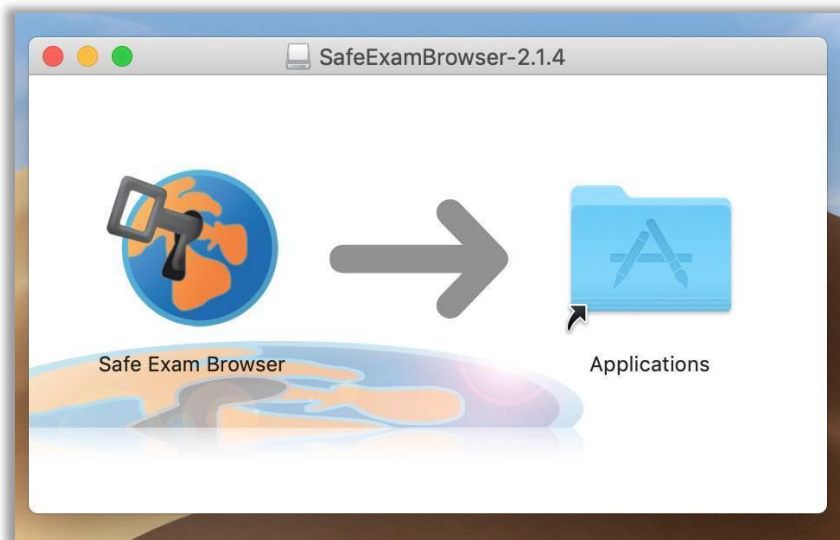


3. Download the Safe Exam Browser Installer from the SEB website at https://sourceforge.net/projects/seb/files/seb-macosx/seb_macos_3.4.1/SafeExamBrowser-3.4.1.dmg/download.

4. Double-click the .DMG file found in the downloads folder.



5. Drag the Safe Exam Browser icon and drop it on the Applications folder icon to the right. You will be asked for an administrator username and password for the computer.



6. You can verify the installation by opening Safe Exam Browser (via Spotlight). The SEB should open in a full screen with a message stating that it needs settings or a link to continue. This indicates that the installation of the program is complete. Please see the section "Loading the SEB Configuration File" below.

Loading the SEB Configuration File

To access the assessment, the system needs to be opened through the Safe Exam Browser using an SEB configuration file. This file opens to a login screen that then opens directly to the assessment.

Please note: The SEB configuration file and its corresponding password need to be provided by technical support.

When setting up computers for the assessment, ensure all computers have the SEB opened before students begin. Please note that the software should not be opened directly. The SEB configuration file in the downloads folder must be double-clicked.

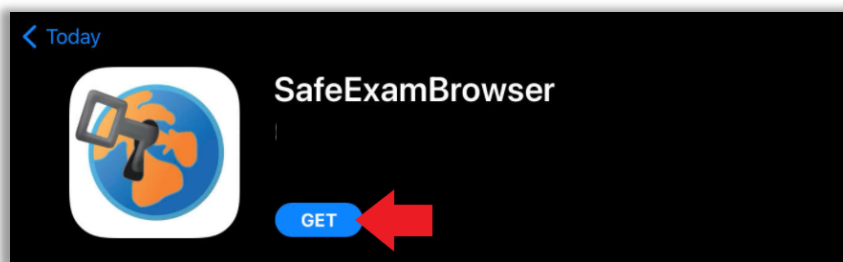


Configuring iPads

The assessments can only be accessed through the Safe Exam Browser (SEB) using a valid configuration file. The SEB is a specialized web browser that restricts students' access to external tools and resources while they are taking the assessment. The SEB configuration file regulates access to system functions, other applications, and other settings while also pointing the SEB to the assessment and performing a special "handshake" to validate security.

The following instructions describe the process for downloading and accessing the SEB from iPads:

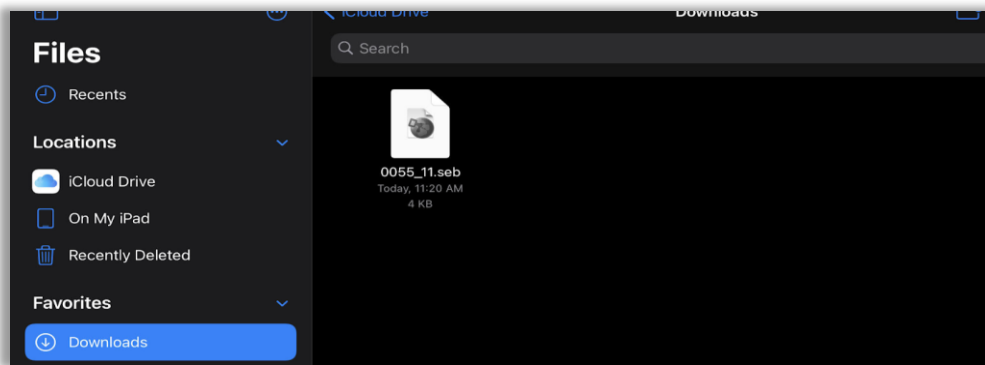
1. Download the Safe Exam Browser App from the Apple App Store. You can use [this link](#) to access the App Store listing.



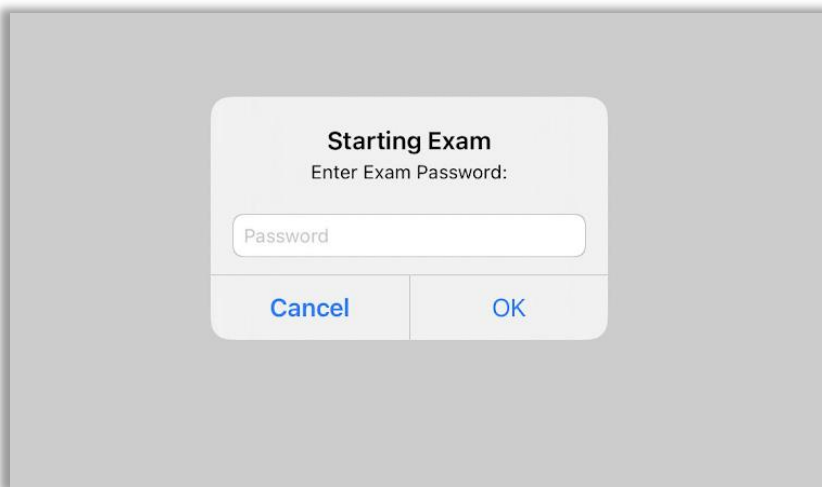
Please note: If you attempt to open the Safe Exam Browser app after you have downloaded it, you will be brought to a configuration page. You do not need to enter anything on this page. To access the assessment, you will need only to open the SEB configuration file.

2. Download the SEB configuration file onto your iPad. The SEB configuration file and its corresponding password needs to be provided by technical support.

3. Once the file is downloaded, navigate to the “Downloads” folder on your iPad, find the SEB configuration file and open the file.



4. After you have opened the file, you will be asked to enter the SEB password. This password will be provided by the technical support team.



5. Entering the password will bring you to a login page.

Please note: To exit the SEB, you will need to re-enter the SEB password. To relaunch the SEB, you will need to repeat steps 3 through 5.