



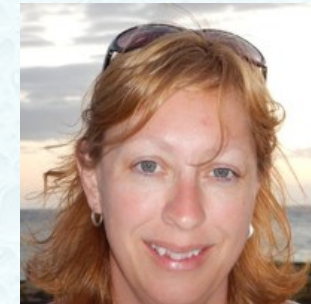
Transitioning Planning to Adulthood: Thinking Ahead and Planning Back

Transition Educator, Learning Services
School District 43

Work Experience Facilitator, Learning Services
School District 43

Sharon Rittich

srittich@sd43.bc.ca





Land Acknowledgment

School District No. 43 (Coquitlam) is on the core territory of the *kʷikʷəłəm* (Kwkwetlem) First Nation and lies within the shared traditional territories of the Tsleil-Waututh, Katzie, *xʷməθkʷəy̓əm* (Musqueam), *Skwxwú7mesh Úxwumixw* (Squamish), Quay Quayt First Nation and Sto:lo Nation.

<https://native-land.ca/territory-acknowledgement/>

Agenda



Person Centered Planning and District Work Experience Program



Paid Employment Opportunities



Transition to Adulthood, Post-Secondary Opportunities

Students We Service

- ▶ Any student with barriers to employment and post secondary
- ▶ 1701 list
- ▶ High and Low incidence
- ▶ Many pursuing the Evergreen Completion Certificate

- ▶ Learning Services sites
 - ▶ <https://sd43bccca.sharepoint.com/sites/LSTransitions>
 - ▶ <https://sd43bccca.sharepoint.com/sites/LSWorkExperience>



SD43 District WEX Program

A Roadmap to Employment for Students with Barriers

Paid Employment for ALL



The District Work Experience Program is based on the belief that all students belong in community and that everyone has something to contribute.

Grade 9

- Focus on Discovery (ongoing)- Knowing the Learner

Grade 10

- Building Employability Skills In a Classroom Setting/ Targeted Interventions in Support Setting (ongoing)

Grade 11

- School Based/Community WEX Placement/ WE Opportunity
- Community Pre-Employment-Employment Programs

Grade 12

- Community Placement, Entrepreneurship
- Community Pre-Employment-Employment Programs

Grade 12+/++

- Transition to Adulthood and Paid Employment
- Community Pre-Employment-Employment Programs

The WEX Curriculum: The Journey to Paid Employment

Discovery- Career
Exploration

Building a Resume

Preparing for an
Interview

Safety in the
Workplace

Job Tasks,
Accommodations
and Supports

Reflection,
Setting Personal
Goals

Planning for Next
Steps



Work Experience Placements

- ▶ A placement consists of between 30-60 hours of on-site work
- ▶ Site aligns with persons strengths and interests and future goals
- ▶ On site job coaching from EA and WEX Facilitator



Employment Goals

- Supporting individual needs (job matching) and developing the student's Employment goal portfolio through discovery
- Developing enabling skills for work/employment
- Accessing available support services
- Practical and relevant work experience
- Self-disclosure, rights and accommodations
- Family Supports

Work Experience and Paid Employment Opportunities

Canucks Autism
Network: Ready,
Willing, and
Able

CAN Steps

WorkBC

LEAP

MentorAbility

Workforce
Innovation

Chance to
Choose

Neil Squire
Society Working
Together

Why Foundry Works

Foundry envisions all young people in B.C. having the supports they need to live the life they want to lead. That includes vocational and employment services integrated with other health and social services young people need, delivered in a personalized way. We are excited to launch Foundry Works!

Steve Mathias,
executive director, Foundry.



Contact Us!



Kim Dumore
Project Coordinator
Call or Text 604.812.1335
kdumore@comservice.bc.ca

Jonathan Chambers
Employment Specialist
Call or Text 604.928.4703
foundryworks@comservice.bc.ca

 foundryridgemeadows

 FoundryRidgeMeadows

community
SERVICES
Changing lives together

· FOUNDRY ·
RIDGE MEADOWS

Foundry Works

A SUPPORTED
PROGRAM TO
ASSIST YOUTH
PURSUING
EMPLOYMENT
AND EDUCATION



Foundry Employment Program

Focus on mental health and
personal supports



What is Foundry Works?

Foundry Works is a supported work or study program.

It helps youth prepare for and find employment, access education at the secondary or post-secondary level, or locate volunteer opportunities. Foundry Works! offers individual and group support both in person and virtually.

About Us

The Foundry Works team is here to support you every step of the way on your Employment and School journey.

Our goal is to meet you where you are at and walk alongside and support you.



Eligibility Criteria

What is the Eligibility Criteria?

Foundry Works is open to youth between the ages of 16-24 who are:

- BC youth who are not working or studying more than 15 hours per week
- wanting to work, attend school and/or volunteer
- not actively working with another employment program
- Canadian citizen, permanent resident, new immigrant or is on a working visa



Program Outline

- individual vocational support
- counselling (optional)
- drop-in hours Thursdays 2-4pm
- informational workshops (group format, online or in-person)
- access to computers, printers, telephones, Wifi
- support with individual needs (obtaining ID, work clothes, accessing health care or other needs)
- ongoing support with vocational or educational goals

Foundry Works staff will work with you to create a service plan that aligns with your personal needs and goals



WorkBC

Work BC Services - 16+

Contact: Carolyn Duggan

- ▶ <https://www.workbc.ca/>
- ▶ Workshops
- ▶ Specialized Assessments
- ▶ Customized Employment Support Specialists
- ▶ Counselling
- ▶ Assistive Technology
- ▶ Youth Focused Training
- ▶ Self-Employment Services
- ▶ Job Development/Wage Subsidy Youth Paid Programs

Boys and Girls Club

Contact: Jake Sheridan
(Coordinator, Employment Programs)
jsheridan@bgcbc.ca



Boys & Girls Clubs
of South Coast BC

Offering a free virtual “5-day Springtastic Job Club” set to run over 2022 spring break.

It’s scheduled to run from **March 21st to March 25th 2022** and it’s geared at students who want to find work and are taking 3 courses or less this semester.

I’ve attached the flyer that explains things in more detail.

If you want to refer or if a student wants to signup please email: employmentprograms@bgcbc.ca or call: **604-591-9262 ext. 117** and either speak to one of our staff or leave a message for a callback.

They can also go to our website and signup online here: <https://www.bgcbc.ca/employment/workshop-dates/>

The key criteria would be that they would be looking for work or planning to find a job upon completing and be aged 17 or turning 17 in the next 5 months.

Entrepreneurship

- ▶ Douglas College: <https://www.douglascollege.ca/programs-courses/training-group/employment-services-career-development/entrepreneur-works>
- ▶ Young Entrepreneur Leaders: <https://yellcanada.org/>
- ▶ Futurpreneur Mentoring and Grants: <https://www.futurpreneur.ca/en/press-media/helping-young-entrepreneurs-succeed/>
- ▶ Biz Kids Creating Business Plans: <https://bizkids.com/>

Additional Employment Resource Contact Information

▶ LEAP- CBI (16-24) <https://cbiconsultants.com/employment-services/>

▶ Employment Now- Boys and Girls Club (17-29)

▶ Canucks Autism Network (16+)- Ready, Willing, Able

▶ Contact: Ross MacMillan ross.macmillan@canucksautism.ca

▶ Burnaby Neighborhood House

▶ Contact: Sophia Canelas leadership@burnabynh.ca

Pro D: Autism in the Workplace free course

▶ <https://circa.educ.ubc.ca/autism-in-the-workplace/>

Post Secondary Opportunities

Douglas College-
CAVE

Douglas College-
VEST

Steps Forward

Kwantlen - Access
Programs for People
with Disabilities
Department (APPD)

Capilano- Education
and Employment
Access Certificate

SFU Autism
Mentorship
Initiative

SFU Note Taking
Program

Post Secondary
Accessibility
Resources

Douglas College VEST Programs

- ▶ [Vocational Education and Skills Training | Douglas College](#)
- ▶ **Contact: Davi Bachra, Program Director**
- ▶ **Email: bachrad@douglascollege.ca**
- ▶ Douglas College offers Vocational Education and Skills Training (VEST) programs to people with disabilities or barriers to education and employment. Programs help students identify career paths, develop work skills, or move on to additional education or employment.

Douglas College CAVE and Impact

- ▶ **Douglas College Programs DC CAVE and DC Impact**
- ▶ **Contact: Chris Mara**
- ▶ Program Facilitator / Marketer
- ▶ CAVE Youth Employment Program
- ▶ Douglas College - Training Group
- ▶ Phone: 604-306-7125
- ▶ Email: cmara1@douglascollege.ca
www.douglascollege.ca/caveyouth

Douglas College VEST- CAEP Program

- ▶ Career and Employment Preparation (CAEP)
- ▶ The Career and Employment Preparation (CAEP) Program is designed to assist individuals with barriers to employment. Students identify a realistic, achievable career goal and make a plan to reach that goal. They learn and practice the skills needed to be successful in further vocational training. The program includes four weeks of work placement, where students demonstrate the employability skills they have practiced in the classroom.

STEPS FORWARD

- ▶ **Steps Forward:** <https://www.bc-ipse.org/>
- ▶ STEPS Forward's BC Initiative for Inclusive Post-Secondary Education (BC-IPSE) provides inclusion support for students with developmental disabilities to access post-secondary education in BC.

Students are supported to enroll at the university or college of their choice and to pursue studies and engage in student life in the same classes and places as any other student. Over 4 years, students take a variety of courses with a focus in a specific field of studies.

These studies are recognized by the college or university with a Certificate of Completion awarded to students at Convocation alongside students earning a BA in the same field of studies.

Kwantlen

- ▶ **Kwantlen – Access Programs for People with Disabilities Department (APPD)**
- ▶ <https://www.kpu.ca/acp/eacs>
- ▶ This program is designed for students with diverse learning needs that hinder educational success.
- ▶ The EACS courses and learning experiences will prepare students for lifelong learning, employment, and community engagement opportunities. Students will participate in hands-on learning and work experience opportunities.

Capilano

- ▶ [Education and Employment Access Certificate – Capilano University](#)
- ▶ If you're a student living with a learning disability or a social, physical, or mental health challenge we can help you transition from high school to post-secondary education or meaningful employment. Students will finish with a personal portfolio, educational and employment-related certifications, strategies for success in first year courses, and current work experience in a sector related to their vocational interests.



SFU Autism Mentorship Initiative

- ▶ [Autism Mentorship Initiative - Centre for Accessible Learning \(CAL\) - Simon Fraser University \(sfu.ca\)](#)
- ▶ The goals of the service are to enhance your social experience and connection to the University community and to help support your academic success.
- ▶ You will be matched up with an SFU student who has received specialized training as a mentor. You and your mentor will identify areas of interest or concern to explore over the course of each semester. Focus areas may include topics such as: improving your academic skills (e.g., effectively structuring your study time); communication and interpersonal skills (e.g., how to talk with a professor or another student); or finding out about campus activities and resources.

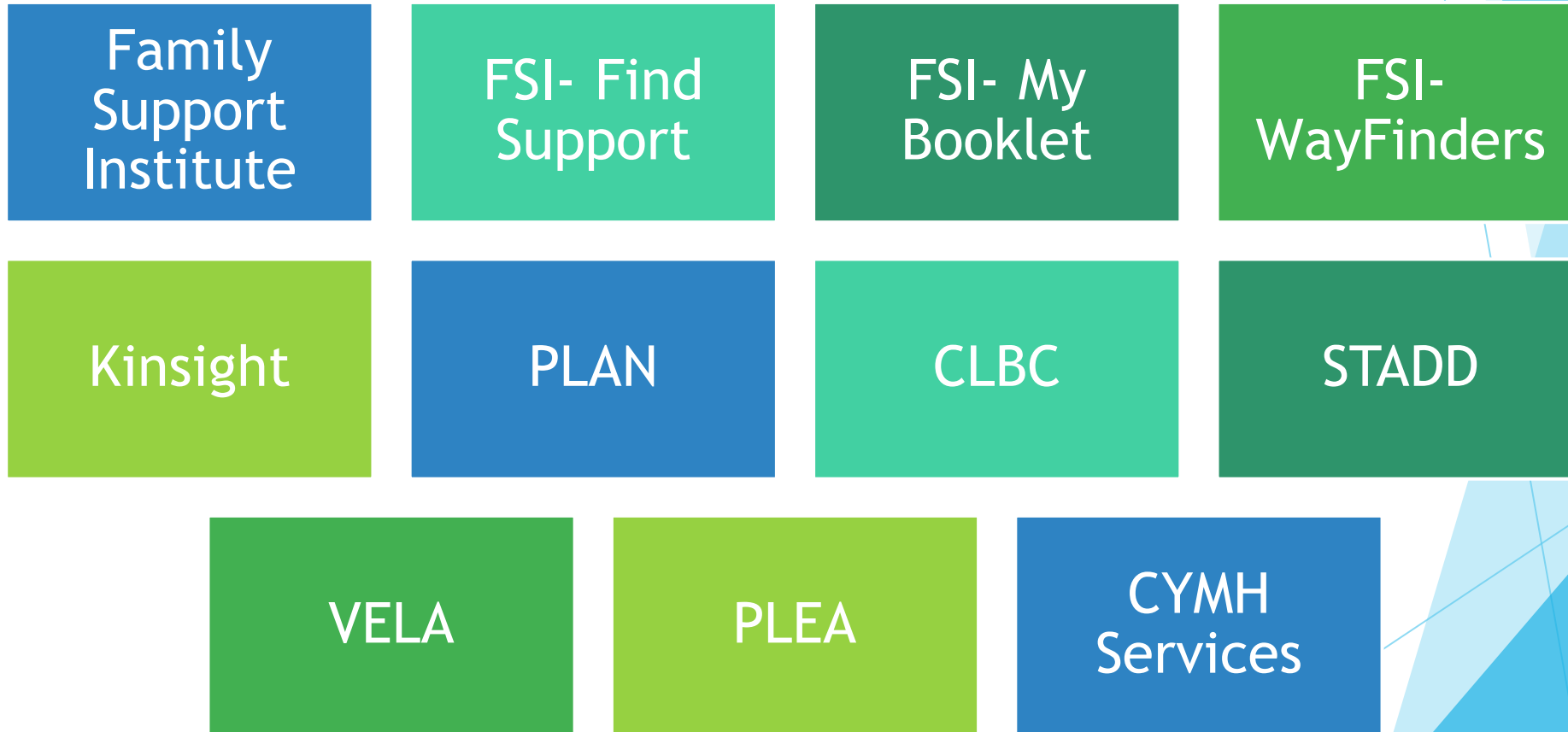
SFU Note Taking Program

- ▶ [The Note-Taking Program – Centre for Accessible Learning \(CAL\) – Simon Fraser University \(sfu.ca\)](#)
- ▶ The note-taking program is a service that the CAL provides to students with who, because of their disability (e.g., mobility impairment, hearing, or visual impairment, or learning disability), are unable to take their own notes in class.

Post Secondary Accessibility Resources

- ▶ **Post-Secondary Inclusive Education**
- ▶ **Services at Post-Secondary**
- ▶ [Disability or Accessibility Services \(educationplannerbc.ca\)](https://educationplannerbc.ca)
- ▶ All BC post-secondary institutions have a disability or accessibility services department that works one-on-one with students to ensure their needs are met and can achieve their education and work/life goals.

Transition to Adulthood and Post-Secondary Opportunities



Accessing Adult Services and Supporting Transition Goals

Find Support BC: <https://findsupportbc.com/>

We connect families of persons with disabilities with resources available to them in their community.

Family Support Institute: 1-800-441-5403 or Email: fsi@fsibc.com

<https://familysupportbc.com/>

The Family Support Institute of BC (FSI) is a provincial not for profit society committed to supporting families who have a family member with a disability. FSI is unique in Canada and the only grass roots family-to-family organization with a broad volunteer base. FSI's supports and services are FREE to any family.

Wayfinders: <https://wayfindersbc.ca/>

http://wayfindersbc.ca/Marketing/Wayfinders_Video_March2021.mp4

Provides families with free person-centered planning tools like PATH to empower individuals to find their direction towards fuller, richer lives in their community.

SD43 Website Parent Resource Page

[http://www.sd43.bc.ca/Resources/ParentResources/Pages/Resources-for-Families-with-Exceptional-Children.aspx#/ =](http://www.sd43.bc.ca/Resources/ParentResources/Pages/Resources-for-Families-with-Exceptional-Children.aspx#/=)