

New Burke Mountain Elementary in the *Smiling Creek Neighbourhood

OPEN HOUSE &
NEIGHBOURHOOD LEARNING CENTRE (NLC)
CONSULTATION

June 24, 2015

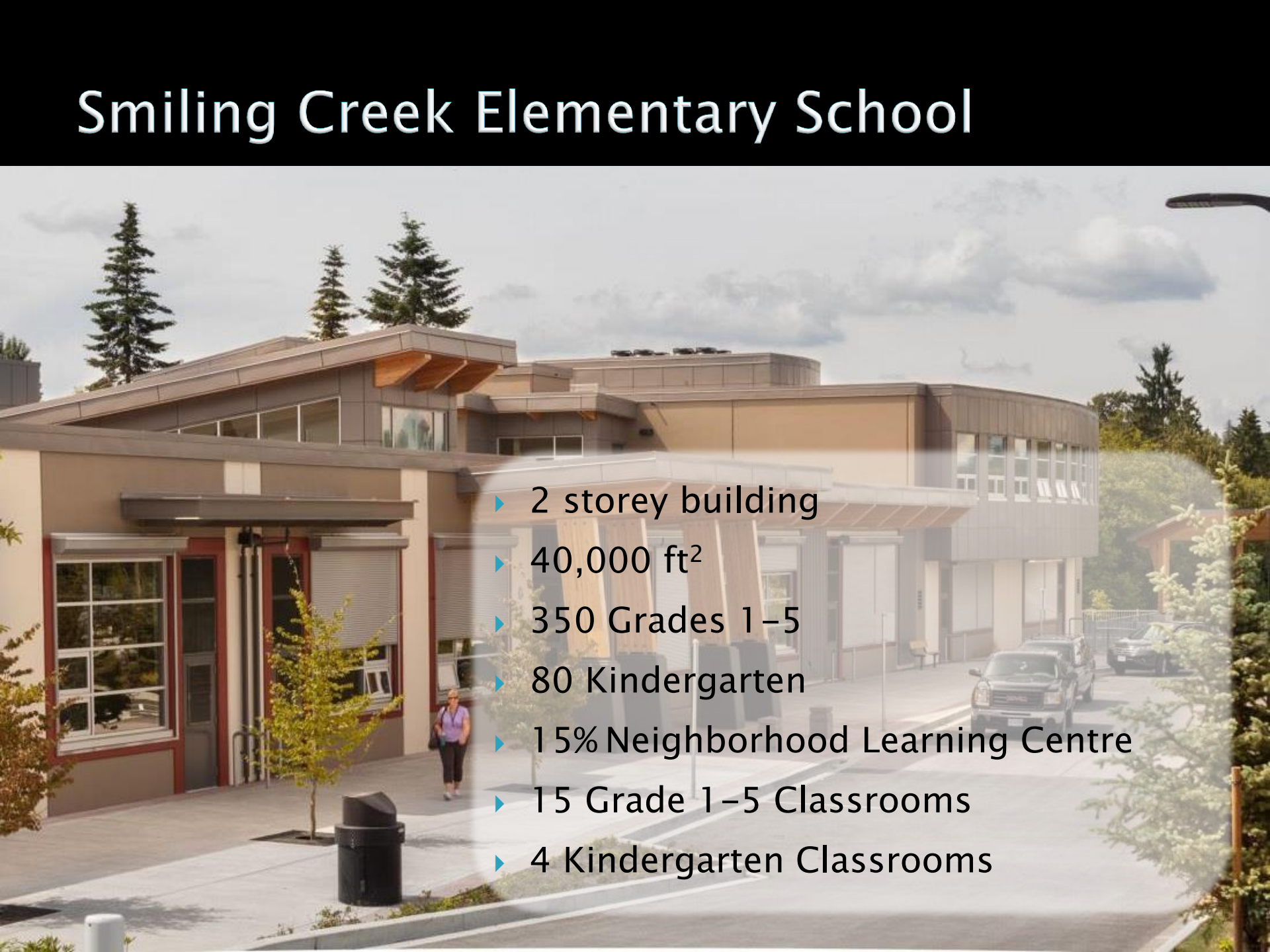
*Smiling Creek Elementary will be used
for ease of communication but the
school name is still to be determined.



Agenda

- ▶ Introductions
- ▶ CHP Architects Presentation
- ▶ NLC Consultation
 - Overview
 - What We Have Heard So Far:
 - Survey Feedback
 - District Design Team Feedback
 - Group/Individual Feedback
- ▶ Next Steps

Smiling Creek Elementary School

- 
- A photograph of Smiling Creek Elementary School, a modern two-story building with a mix of tan and grey siding and large windows. A person is walking on the sidewalk in front of the building. The sky is overcast with grey clouds. A semi-transparent white circle containing a list of school features is overlaid on the right side of the image.
- ▶ 2 storey building
 - ▶ 40,000 ft²
 - ▶ 350 Grades 1–5
 - ▶ 80 Kindergarten
 - ▶ 15% Neighborhood Learning Centre
 - ▶ 15 Grade 1–5 Classrooms
 - ▶ 4 Kindergarten Classrooms

[illegible]

Floor Plans



SECOND FLOOR PLAN



MAIN FLOOR PLAN

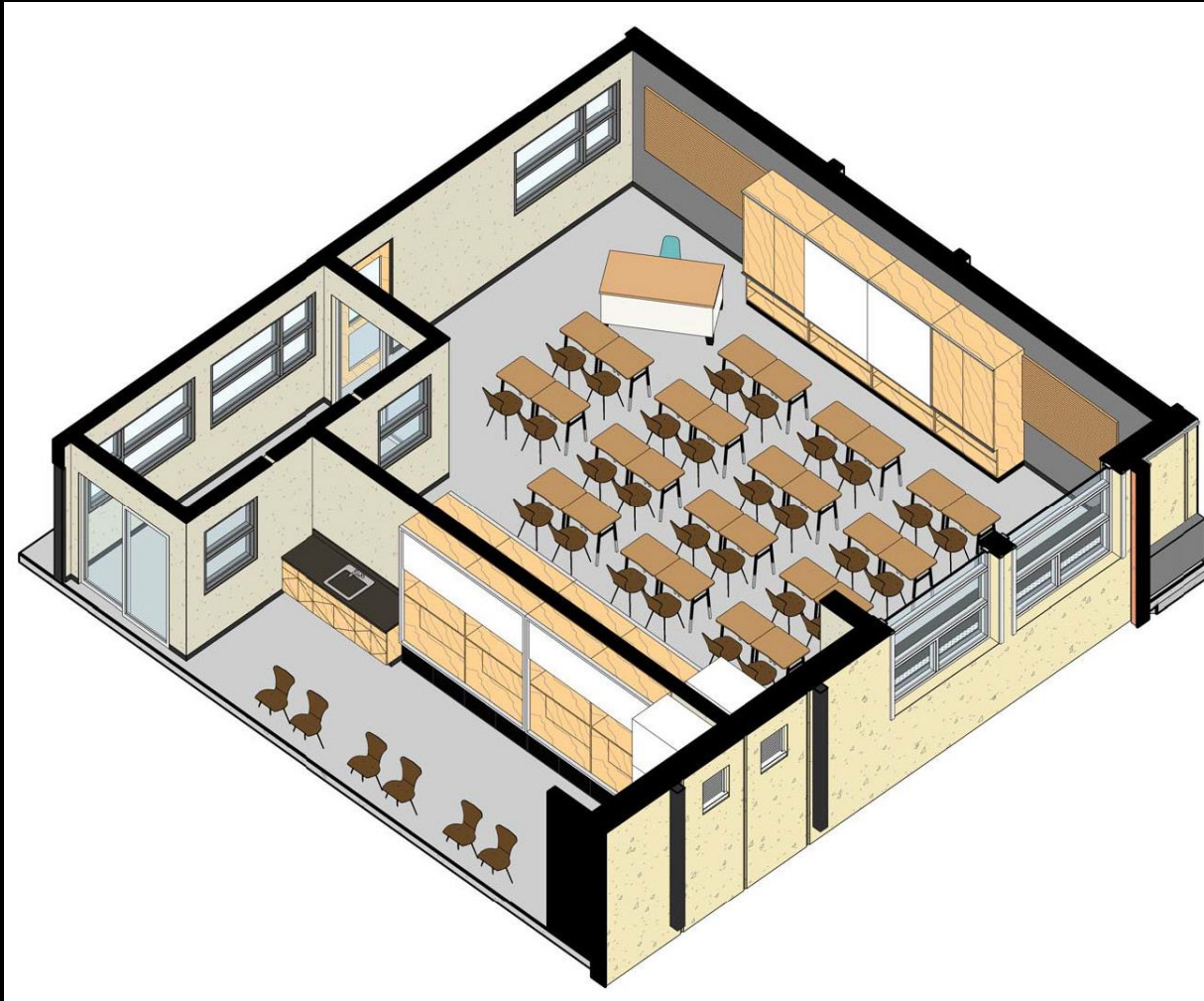


MAIN FLOOR PLAN



SECOND FLOOR PLAN

Smiling Creek Elementary School

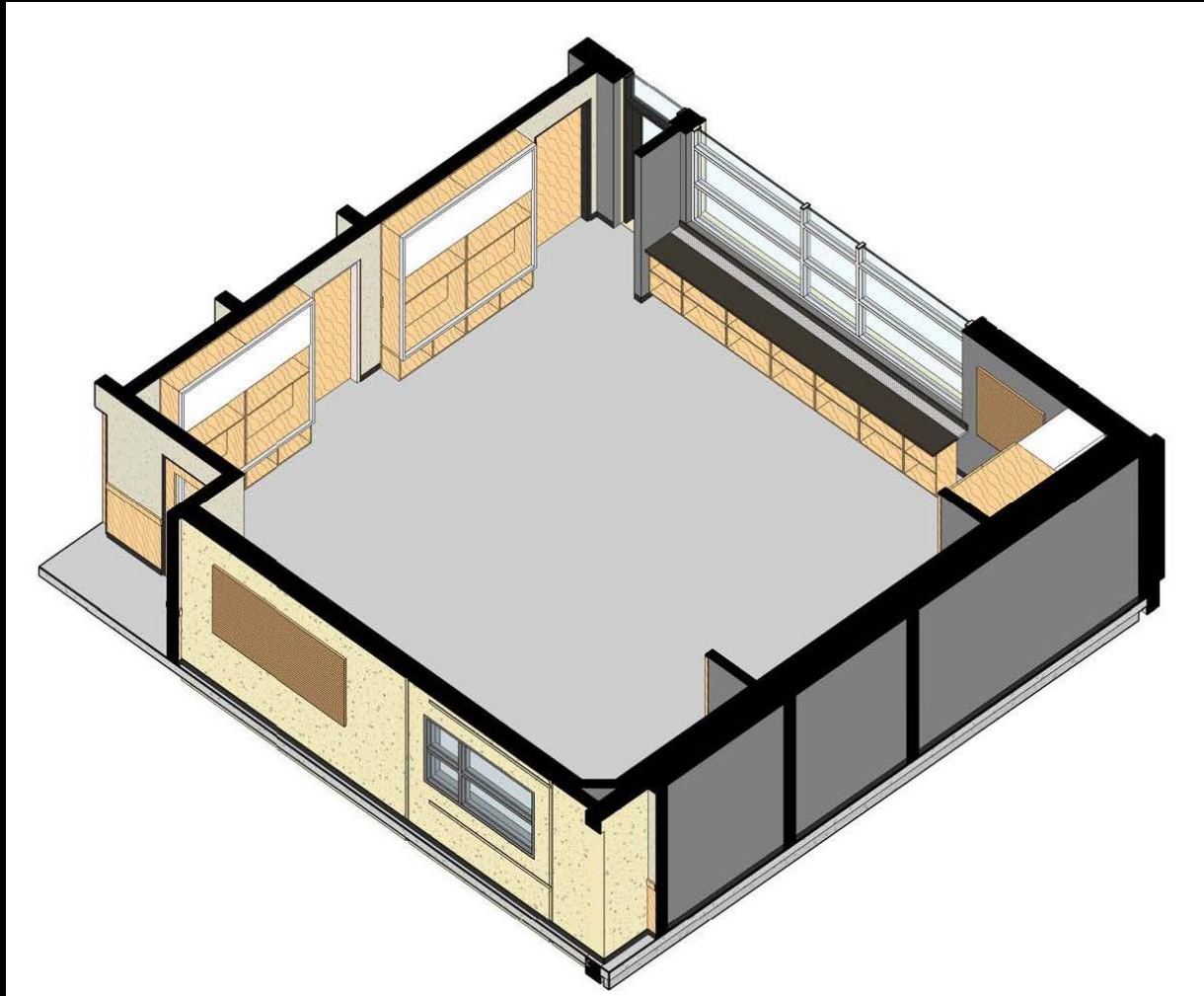


21ST CENTURY
CLASSROOM

Craven | Huston | Powers | Architects

CHPA

Smiling Creek Elementary School



21ST CENTURY
KINDERGARTEN
CLASSROOM

Craven | Huston | Powers | Architects

CHPA



RENDERINGS OF TYPICAL CLASSROOM



Environmental Sustainability

- ▶ Water efficient fixtures
- ▶ Solar shading of windows
- ▶ Access to daylight and views from all occupied spaces
- ▶ Recycling centers throughout the school
- ▶ High efficiency mechanical units
- ▶ Natural material selection including polished concrete floors; exposed wood and steelwork; low-VOC containing paint materials; recycled material content in floor coverings and furnishings.



SOUTH VIEW



NORTH EAST VIEW



NORTH WEST VIEW



Similar Schools



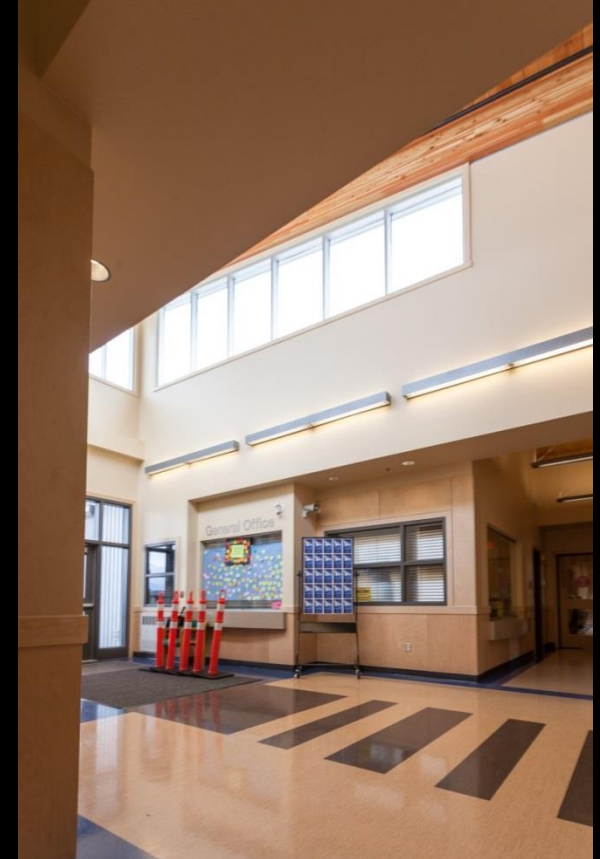
EXTERIOR



Similar Schools



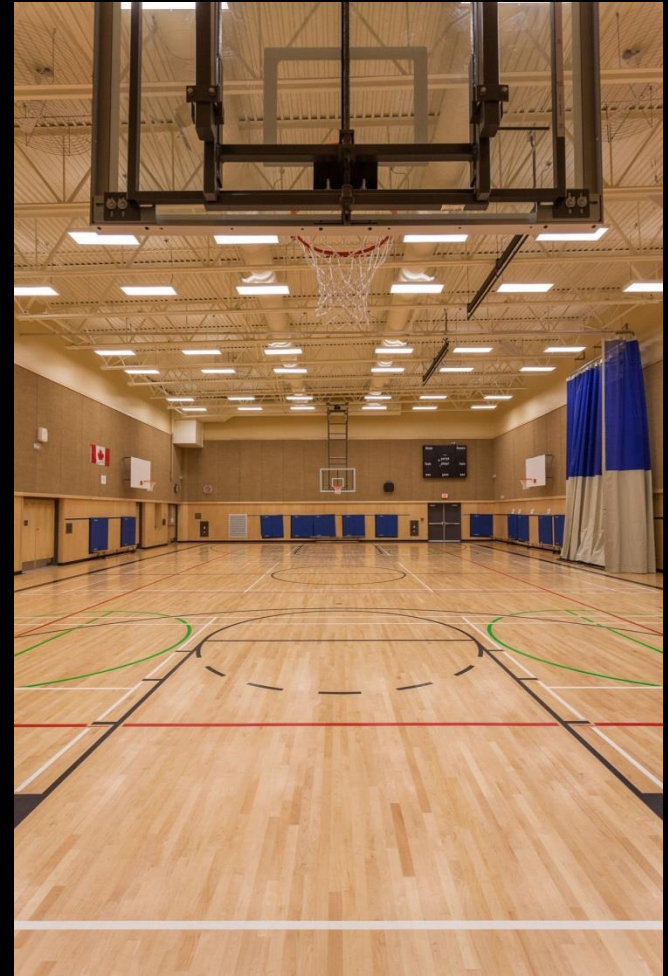
FRONT ENTRANCE



Similar Schools



GYMNASIUM



Similar Schools



MULTI-PURPOSE
AND NLC SPACE

Craven | Huston | Powers | Architects

CHPA

Similar Schools



Craven | Huston | Powers | Architects

CHPA

Similar Schools



LIBRARY & OPEN TEACHING SPACES

Similar Schools



TYPICAL CLASSROOM



Video

Video

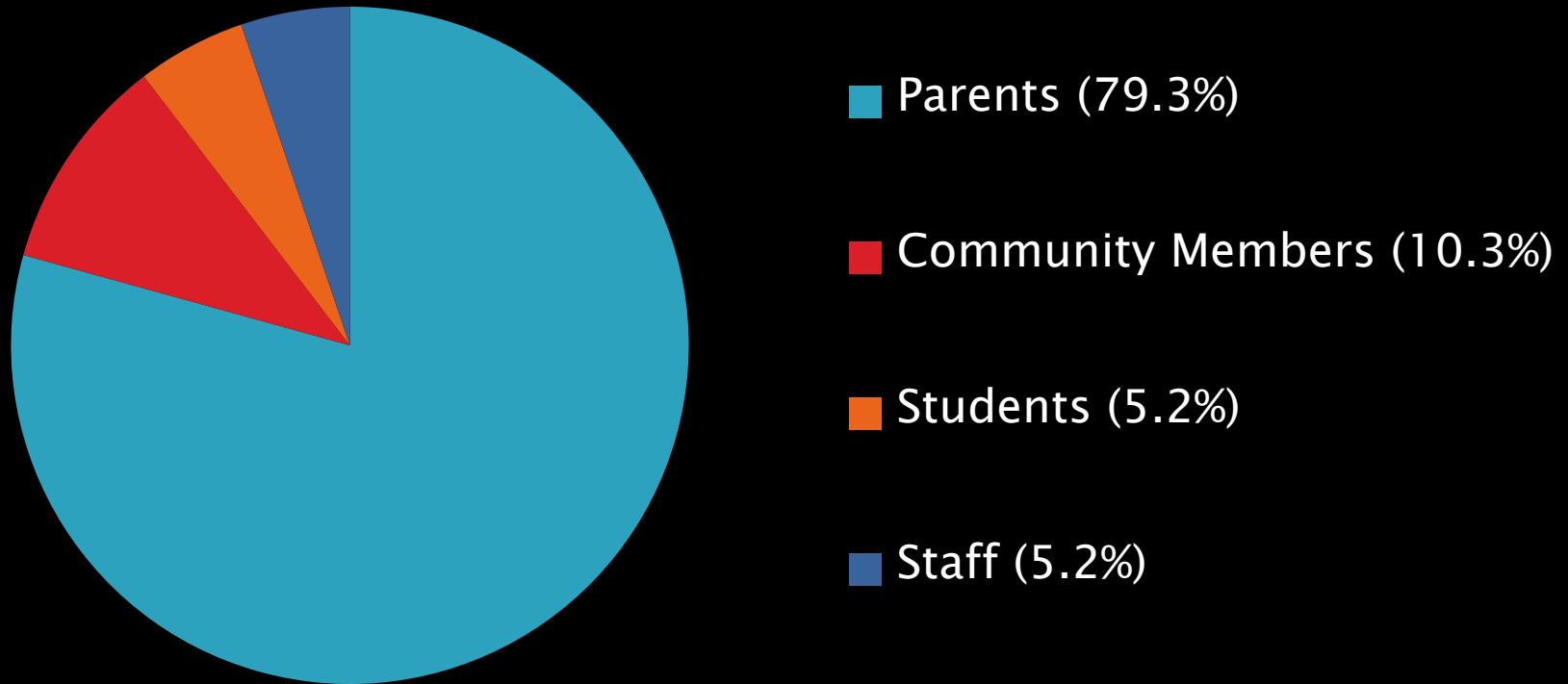
Overview of the NLC Concept

- ▶ Pending Provincial Ministerial approval, NLC space in Smiling Creek Elementary will comprise 15% of the total area
- ▶ Goal: to create innovative ways to design schools that mutually benefit both the school and community
- ▶ School District No.43 has been working collaboratively with the City of Coquitlam on this shared site. The City has committed to building and maintaining the field for school and community use and the City will have after hours access to some of the interior spaces in the building for community and City programs.

Overview of the NLC Concept

- ▶ A variety of models for enhanced programming spaces are possible.
- ▶ Some specific examples that have been included previously in our district are: enlarged curriculum spaces for classroom and community learning, enhanced gym facilities, community offices, and meeting spaces.

Community Survey Feedback



Identified examples for the NLC Space at Smiling Creek Elementary

Mentioned with VERY HIGH frequency:

- ▶ Performing or fine arts/music facilities with programming for all
- ▶ Recreational programming for all

Mentioned with HIGH frequency:

- ▶ Sports programs offered for children, usage of gym
- ▶ Adult recreation spaces for fitness programs, games/sports activities
- ▶ Before & after school programs/activities (affordable)

Mentioned with MEDIUM frequency:

- ▶ Meeting space for school, afterschool, and community programs (such as clubs)
- ▶ Parent/child drop in programs (eg: strong start program)

Mentioned with LOW frequency:

- ▶ Area for play
- ▶ Daycare

Identified benefits for the school and the community for the identified examples (from the previous slide)

Mentioned with VERY HIGH frequency:

- ▶ Enhanced sense of Community/Connection

Mentioned with HIGH frequency:

- ▶ Health Benefits
- ▶ Enhanced student learning
- ▶ Social Space for students/adults
- ▶ Increase proximity to recreational program opportunities

Mentioned with MEDIUM frequency:

- ▶ Better access for families looking for closer before and after school care
- ▶ Better access to arts facilities

Important issues that need to be considered in moving ahead with the Neighbourhood Learning Centre initiative

Mentioned with high frequency:

- ▶ Building a school as soon as possible
- ▶ Size of spaces (build to accommodate the growing population of Burke Mountain)

Mentioned with medium frequency:

- ▶ Inviting / Usable for both school and community
- ▶ Safety in Space and / or Security of the main school after hours.

Mentioned with low frequency:

- ▶ Traffic/Parking
- ▶ Community engagement and consultation

Any other comments or ideas that you believe are important to consider

- ▶ Build this school as soon as possible
- ▶ Additional considerations:
 - Focus on student needs
 - Environmental considerations
 - Affordable programs
 - Diversity of programs offered
 - Sports field and play area
 - Ensure consultation with the broader community

Overall Community Survey Themes

- ▶ Recreation and arts programming
- ▶ Meeting space for before/after school programs, clubs, and the community
- ▶ Space that supports building an increased sense of community and connection
- ▶ Supports student and community learning
- ▶ Supports overall health of students and community members/increase proximity to a community centre
- ▶ Build a school as soon as possible
- ▶ Consider space sizes, safety, and traffic/parking
- ▶ Continue to communicate with the community

District Design Team Feedback

- ▶ Flexible spaces for a variety of school and community uses
- ▶ Recreation and arts programming
- ▶ Meeting space for clubs, after school programs
- ▶ Extra classroom space for potentially increasing enrolment

Feedback and Follow Up

- ▶ Green sheets are available for group feedback
- ▶ Pink sheets are available for individual feedback
- ▶ Feedback can also be done through sticky notes on one of our placards
- ▶ School District personnel, City personnel, and the Architects will be in the placard area for questions

Next Steps

- ▶ The School District will continue to work through the processes needed to build the school
- ▶ Ongoing collaboration with the City will continue with respect to the joint use site and the programming of the Neighbourhood Learning Centre
- ▶ Our architects will continue to work with District and City personnel throughout the process of designing and building Smiling Creek Elementary