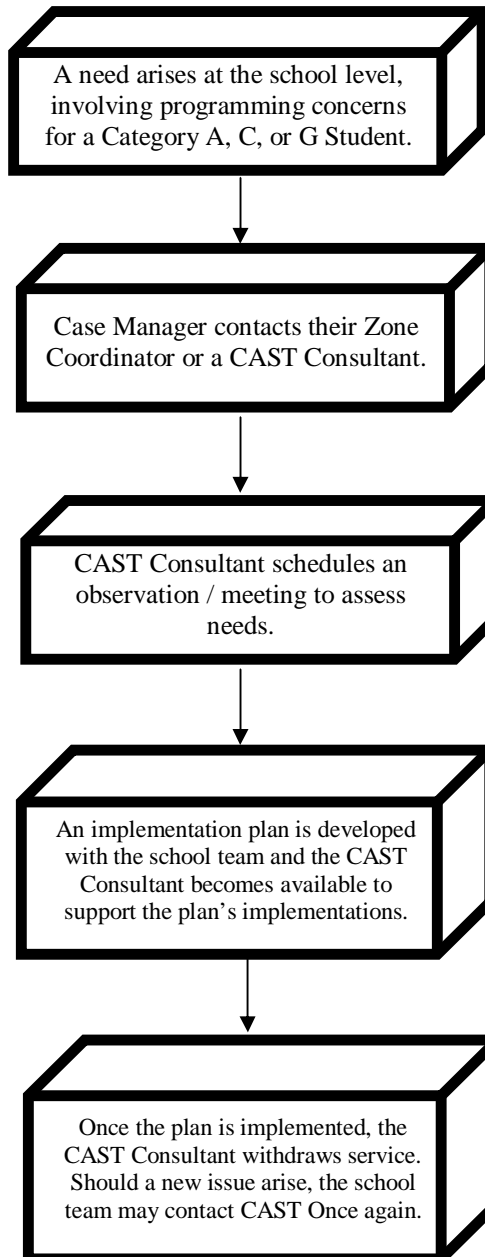


## TYPICAL CASE



## REFERRAL PROCESS

1. Contact your Zone Coordinator or contact one of the CAST Consultants directly.
2. CAST Consultant will contact a representative from the school to determine needs.

### For student-specific concerns:

- ü The consultant will arrange for an initial observation of the student.
- ü A plan for support and intervention will be developed.
- ü The CAST Consultant will be involved in the implementation of the plan.

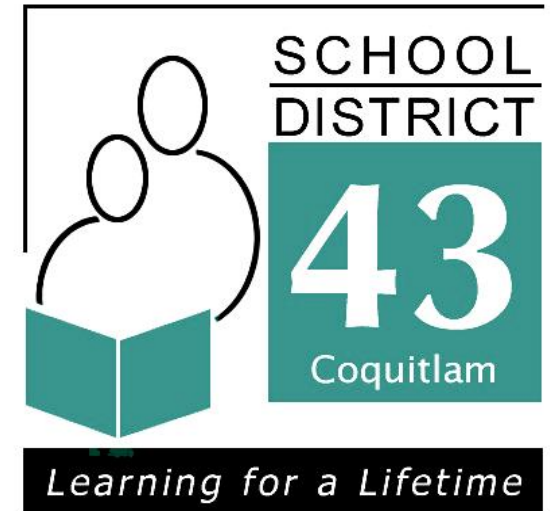
### For Professional Development needs:

- ü The consultant will arrange to meet with a representative of the school team in order to determine the nature of PD needs and an in-service format.

*Student Services 604-937-6386*



*Revised November 2008*



## COQUITLAM AUTISM SPECTRUM TEAM (C.A.S.T.) *At a Glance*

*A Resource for Schools,  
Parents and Students*

**Student Services Department**  
School District No. 43 (Coquitlam)  
1100C Winslow Avenue  
Coquitlam, BC  
V3J 2G3

**604-937-6386**

## OUR MANDATE

- ü CAST is a consultative team of professionals who strive to empower schools in developing the tools and knowledge required to better support students with disabilities in school settings.
- ü CAST will provide support services for students in the following categories:
  - ◇ A - Physically Dependent with Multiple needs
  - ◇ C-Moderate or profound Intellectual Disabilities
  - ◇ G - Autism
- ü The length of CAST involvement will depend on the needs of the student and the needs of the school team:

## TYPES OF PROGRAMMING

While the nature of support will vary, depending on the individual needs of the student and the school team, CAST is available to provide the following array of services:

- ü Consultative services for a limited period of time
- ü Assistance with program design
- ü Assistance with assessment of student needs
- ü Support with IEP development
- ü Training of school support team (Teacher, SEA, Administrator)
- ü Assistance in development and implementation of visual supports, reinforcers, sensory materials, break time activities and materials, instructional material
- ü Direct instruction
- ü Support with referrals for District Services
- ü Support with managing involvement of outside agencies

## IN-SERVICE OPPORTUNITIES

CAST can provide an array of in-service opportunities at the request of schools. In-service may be general or student specific and may include the following topics:

- ü Visual supports
- ü Discrete Trial Training
- ü Sensory Programs
- ü Positive Behaviour Support
- ü Functional Assessment
- ü Instructional Strategies (Chaining, Task Analysis, Fading Prompts, Literacy and Numeracy Skills, etc.)
- ü Assist with developing Individual Education Plans
- ü Picture Exchange Communication System
- ü Using Boardmaker and/or Writing With Symbols
- ü Social Skills Training