



Burke Mountain Schools Information Session

November 9, 2017



Tonight's Agenda

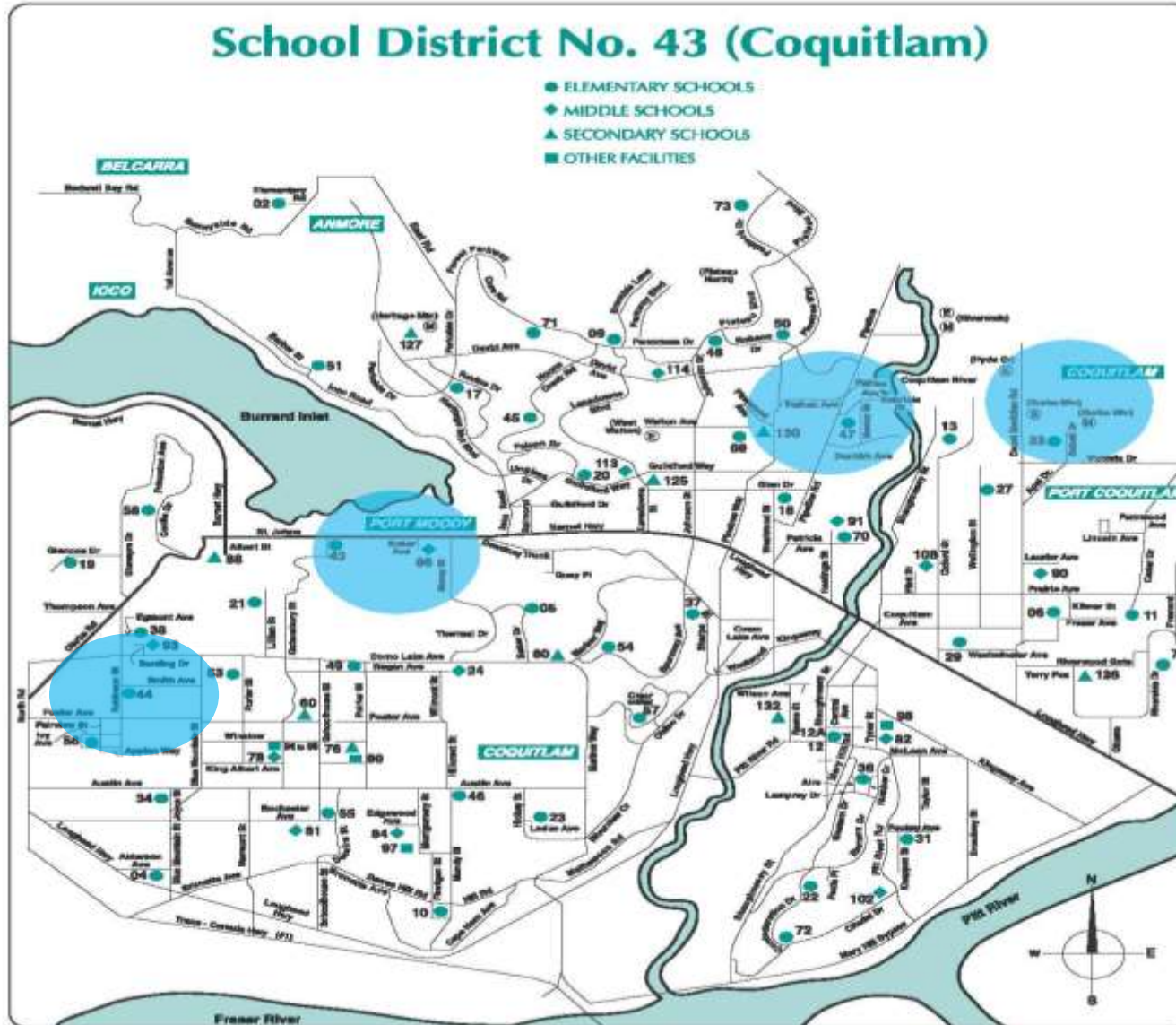
- About School District No. 43 (Coquitlam)
- Background on Burke Mountain Schools
- Taking Action
- Next Steps
- Q and A session

About School District 43

- SD43 serves Coquitlam, Port Coquitlam, Port Moody, Anmore and Belcarra.
- Approximately 30,000 students.
- 70+ schools and facilities.
- Elementary, middle, secondary.
- Projected growth in enrolment.
- Several growth areas in our school district.



Enrolment Demands



Capital Plan Progress (last few years)

Seismic Projects

- Westwood upgrade, Centennial replacement (Phase 1), Moody Middle construction, Banting Middle construction.

Expansion Projects

- Eagle Mountain Middle.
- Smiling Creek Elementary construction.

Building Envelope Projects

- Summit Middle.

Additions

- Blakeburn Elementary: 4-room detached addition.
- Glen Elementary: 4-room addition.

Progress on the Capital Plan

Supreme Court Ruling

- 38 additional classrooms (summer 2017).

Land Acquisition

- Smiling Creek, Sheffield Crown Grant, Marigold Contract.

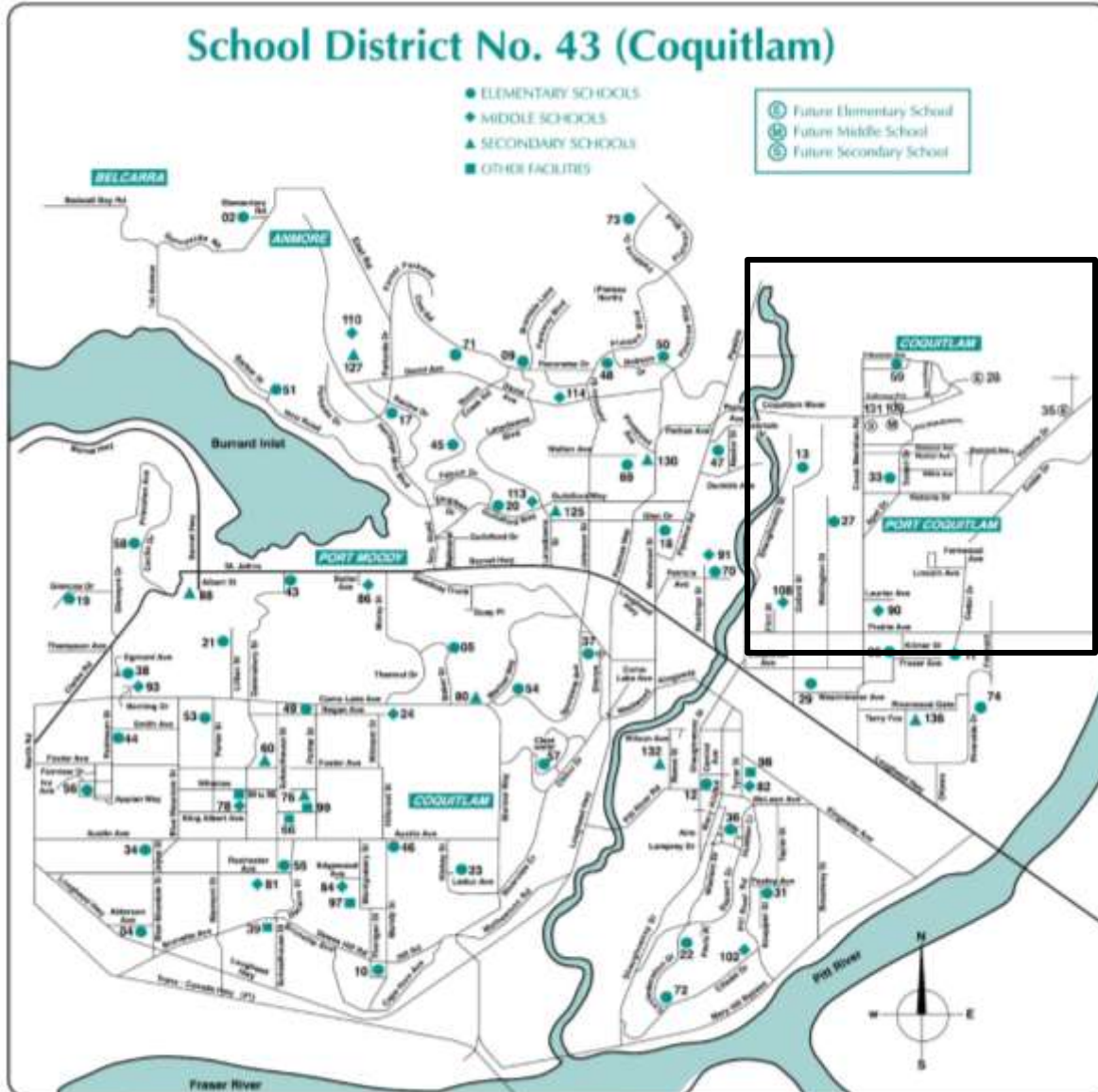
Land Sales

- Parkland portion, Victoria Park Land Exchange, Coronation Park site, Land Sale Consultation (3604 Glen Drive, adjacent to Glen Elementary).

**Current Funding Policy

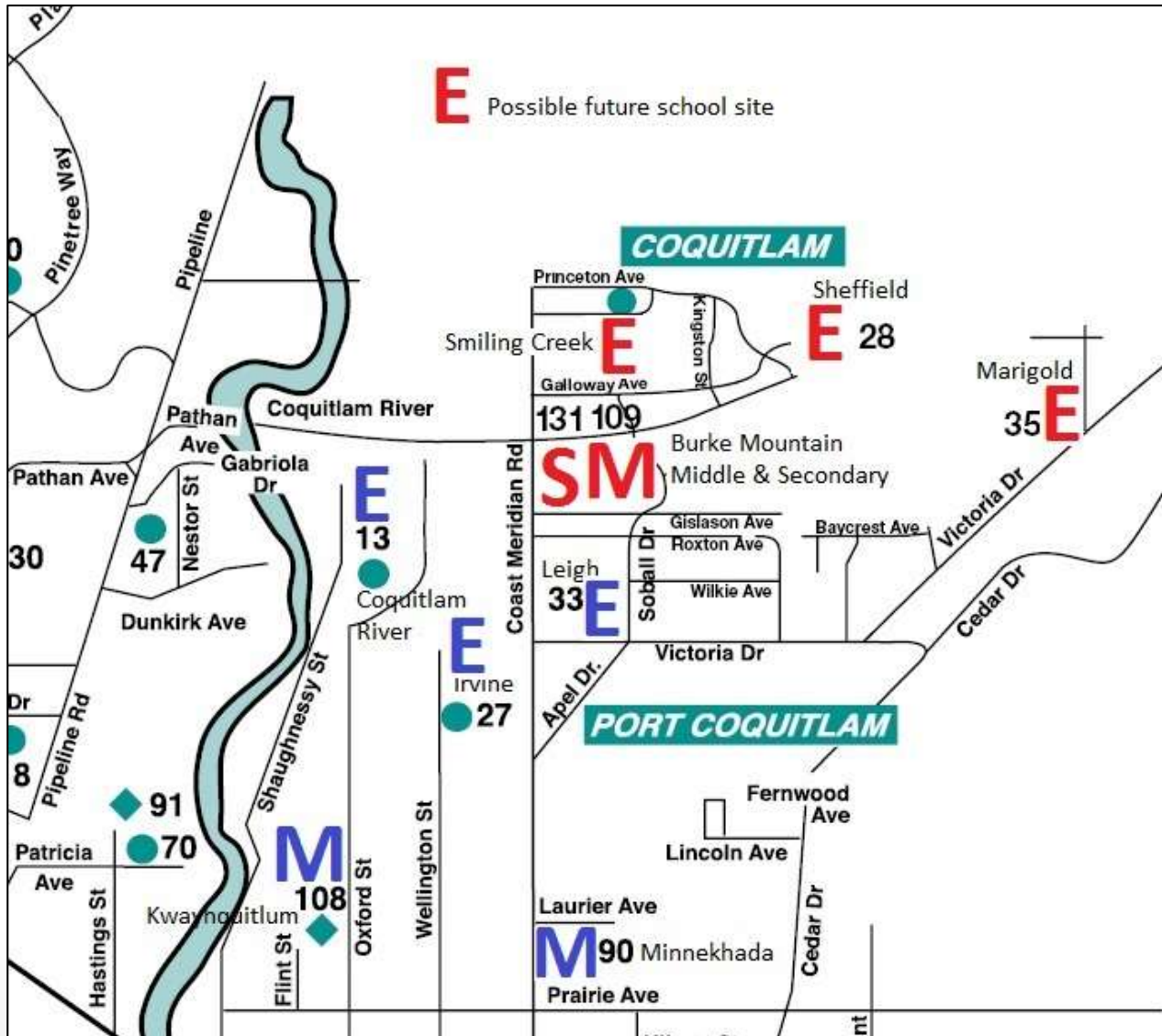
Background on Burke Mountain Schools

Burke Mountain Catchment



Burke Mountain Catchment

4 sites & 5 schools



Securing Land for New Burke Mountain Schools

Land secured for 5 new schools on 4 sites:

- 3 elementary school sites.
- 1 secondary and middle school site.

**Northwest Vision Process*

Partner projects:

- 2 joint school/park sites (City of Coquitlam).
 - Smiling Creek Elementary.
 - Community field and community centre with City of Coquitlam.
 - Middle / Secondary School site.
 - \$5M from Wesbild to the City of Coquitlam for an artificial turf field/park.
- 6 acres donated by Wesbild for the third elementary school (Marigold site).

Taking Action on Burke Mountain Schools

Standard New School Construction Process

- Submit Capital Plan.
- SD submits a Project Request Fact Sheet (PRFS).
- 7 step process to receive approval to purchase land.
- SD submits an updated PRFS.
- Once preliminary support is granted SD completes a Project Development Report (PDR).
- **Approval is attained with a Project Agreement (PA).**
- Architect is hired; design process begins (10-12 months).
- Project is submitted for building permit (3-8 months).
- Tender process (3-6 months)
- Construction (18-36 months).

Action 1: Expediting the Process

Taking action to deliver new schools, faster.

- Frequent meetings with Ministry.
- Advocacy of the Board.
- Advocacy and support of partners.
- Completing reports prior to Ministry direction.
- Board advancing funds to begin design process.
- Where appropriate use modified repeat designs from other schools.
- Working with Municipalities to expedite permitting process.
- Working with partners for efficient use of funds.

Action 2: Smiling Creek Elementary

Taking action on the first elementary school.

- Joint school/park site.
- Approximately 7 acres.
- Coquitlam / SD43 land exchange agreement.
 - City received SD43-owned land in Victoria Park.
 - SD43 received equal amount of land (Queenston Ave).

Action 2: Smiling Creek Elementary

2015 – Taking action to expedite construction.



Action 2: Smiling Creek Elementary

2015 – Original site photo.



Action 2: Smiling Creek Elementary

Smiling Creek sustainability project.



Action 2: Smiling Creek Elementary

2017 – A near completed school.



Action 2: Smiling Creek Elementary

2017 – A near completed school.



Action 2: Smiling Creek Elementary

2017 – A near completed school.



Action 2: Smiling Creek Elementary

Taking action in partnership with the City of Coquitlam.



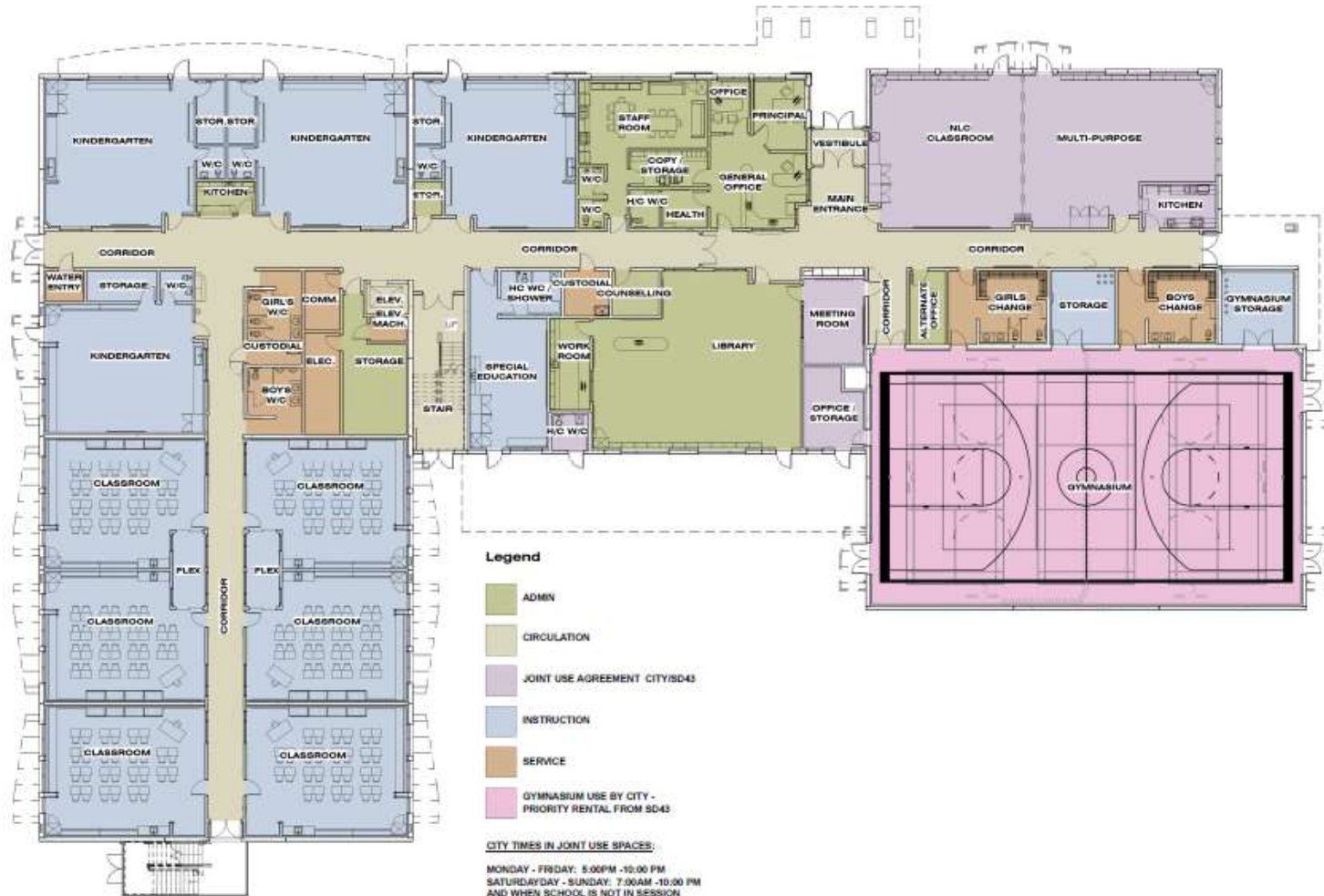
Action 2: Smiling Creek Elementary

Taking action in partnership with the City of Coquitlam.



Action 2: Smiling Creek Elementary

Taking action in partnership with the City of Coquitlam.



Action 3: Minnekhada Middle Replacement Project Approved

Taking action on seismic replacement projects.



Action 3: Minnehada Middle Replacement Project Approved

Taking action on seismic replacement projects.



Action 4: Irvine Elementary Design Underway

Taking action on seismic replacement projects.



- Seismic replacement project.
- French Immersion program.
- All reports submitted.
- June 2017 Board motion to begin design.
- Increased capacity proposed to Ministry.
- Waiting for funding approval from Government.
- Architect selected.

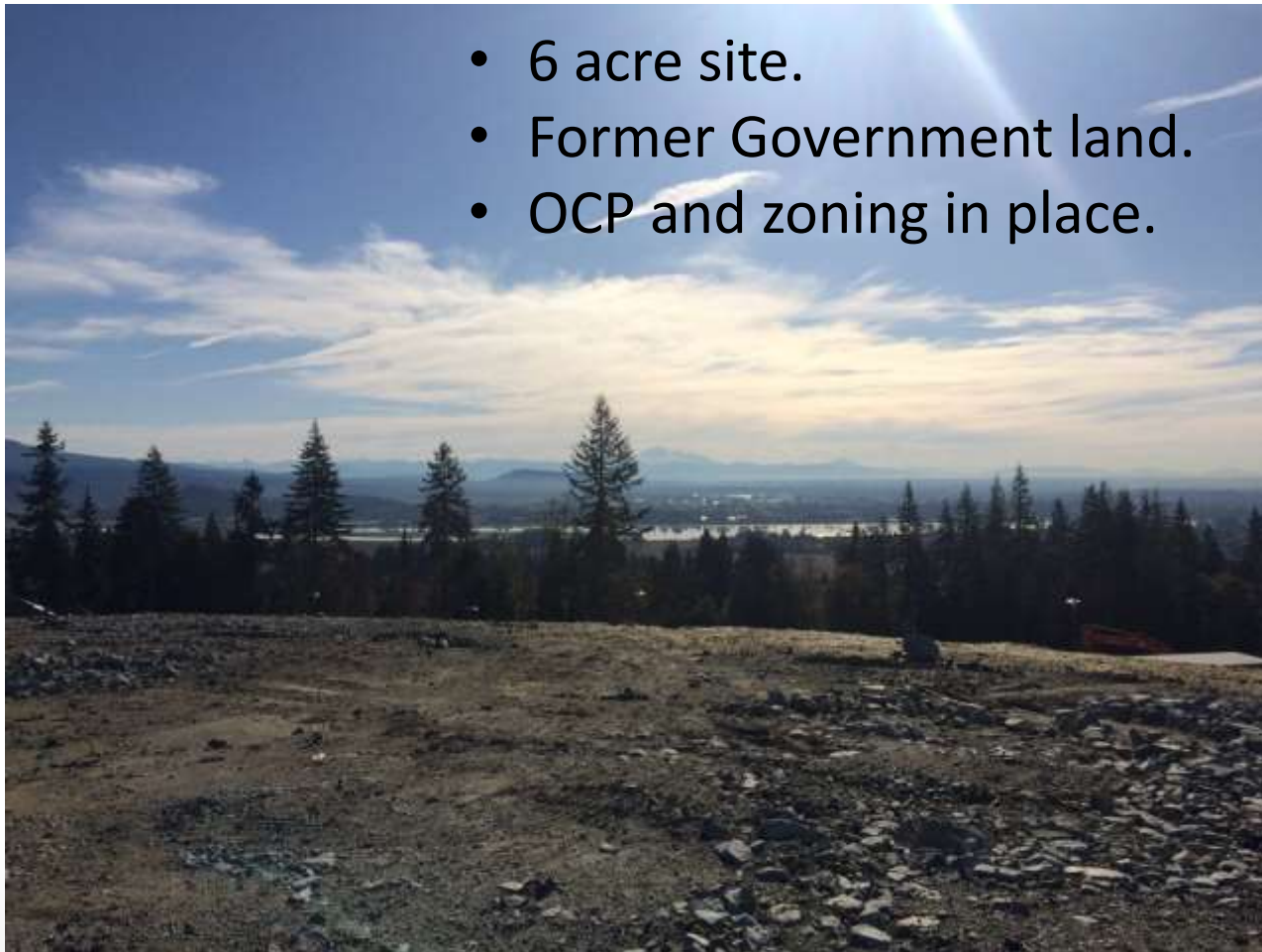
Action 4: Irvine Elementary Design Underway



Action 5: “Sheffield” Elementary Land Secured

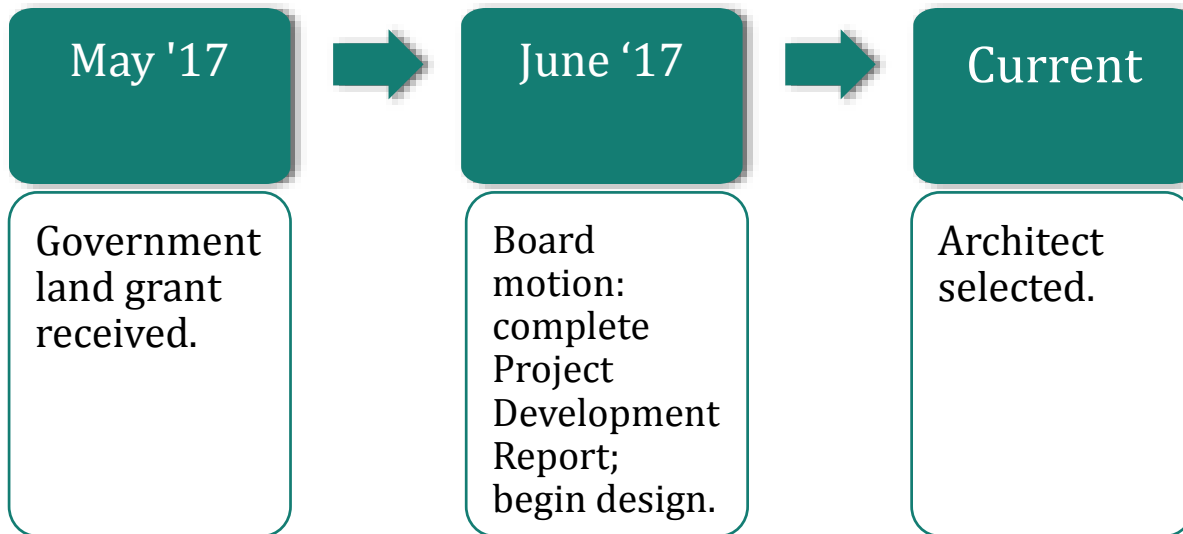
Taking action to secure land for future schools.

- 6 acre site.
- Former Government land.
- OCP and zoning in place.



Action 5: “Sheffield” Elementary Land Secured

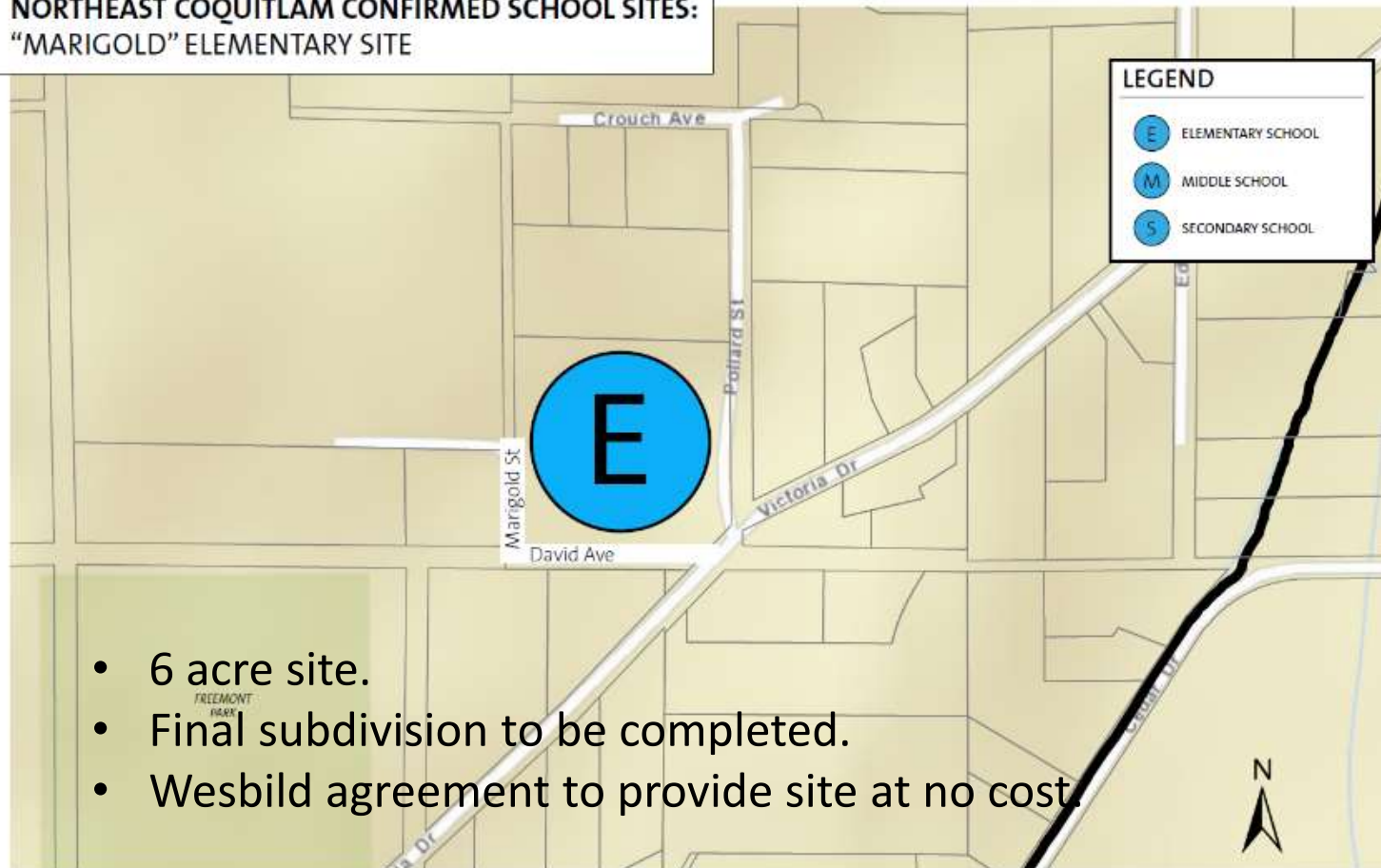
Taking action to secure land for future schools.



Action 6: “Marigold” Elementary Land Agreement

Taking action to secure land for future schools.

NORTHEAST COQUITLAM CONFIRMED SCHOOL SITES:
“MARIGOLD” ELEMENTARY SITE



- 6 acre site.
- Final subdivision to be completed.
- Wesbild agreement to provide site at no cost.

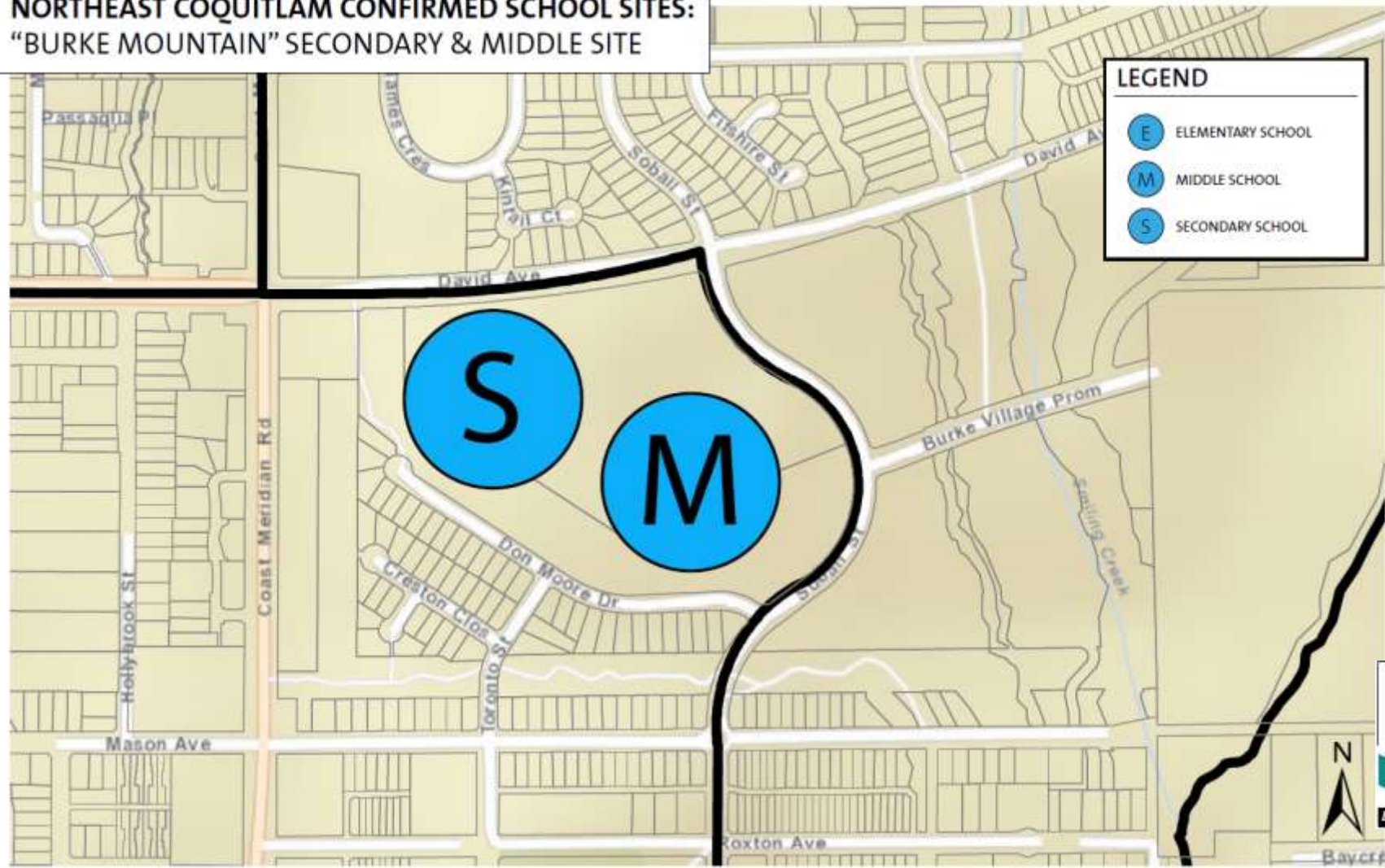
Next Steps

Next Steps

- **Smiling Creek** – First new elementary – September 2018
 - Catchment/registration meeting Nov. 30, 2017 at Leigh Elementary.
- **Minnekhada Middle** – Seismic replacement
 - Tender ready.
 - Approximately 2 year occupancy of new school.
- **Irvine Elementary** – Seismic replacement
 - All paperwork into Ministry.
 - Architect selected and design in progress.
 - Advocating for funding approval.
- **“Sheffield” Elementary** – Second new elementary
 - Project Development Report / Design Process beginning.

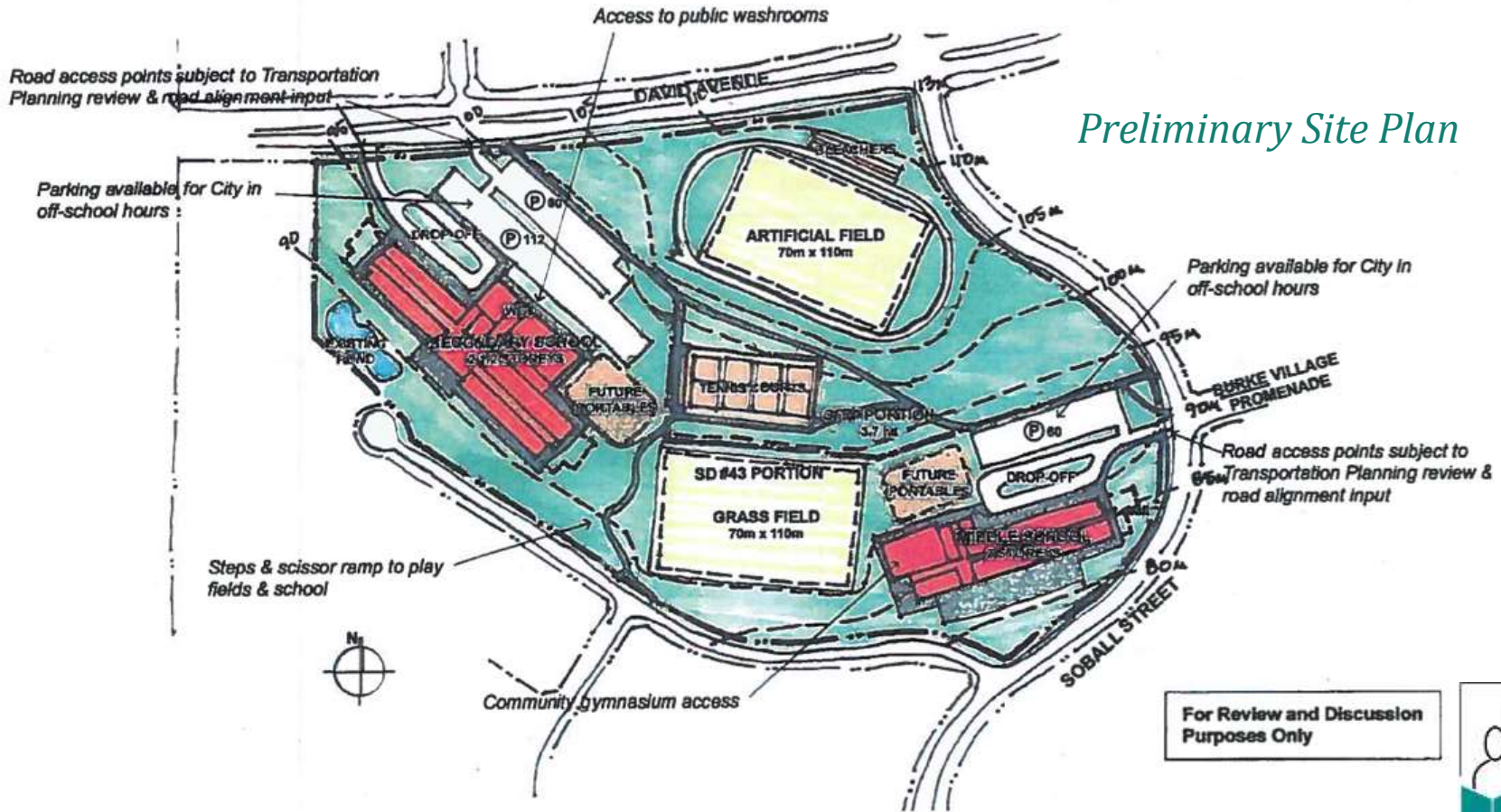
Middle and Secondary Schools Site

NORTHEAST COQUITLAM CONFIRMED SCHOOL SITES:
"BURKE MOUNTAIN" SECONDARY & MIDDLE SITE



Middle and Secondary Schools Site

Working in Partnership



ANNOTATED SITE PLAN

JOINT-USE MIDDLE/ SECONDARY SCHOOL SITE- BURKE MOUNTAIN

1.2000 April 17, 2015

Middle and Secondary Schools Site

Working in Partnership

City of Coquitlam Role / Partnership

- Designated Joint School/Park Site in Neighbourhood Plan.
- City acquired land jointly with SD43.
- The City has prioritized the development of this site.
- The project is included in the City's proposed 5-Year Financial Plan (2018-2022) with specific funding proposed to match timing of school development.
- Proposed City funding earmarked for this park project is \$7.5 million (\$5 million from Wesbild, \$2.5 million in other funding).



Middle and Secondary Schools Site

Working in Partnership

City of Coquitlam Role / Partnership

- The site is proposed to include a lit turf sports field, track, park space and other park amenities and facilities.
- The City is prepared to begin participating in the planning process for the joint site once SD43 obtains approval to proceed with the school, and City resourcing will be dedicated to support this project.
- Coquitlam Council continues to support expediting of the City permitting and site development approval process for School facilities, as per the Smiling Creek Joint site.
- The City continues to explore opportunities to partner with SD43 across many sites to advance common interests and to achieve public benefits.



Advancing Schools - Next Steps

- Advocacy.
- Strong and collaborative partnerships.
- Efficient planning and construction practices.
- “Out-of-the-box” thinking for creative solutions.

*We all want new schools
for Burke Mountain.*



Next Steps on a Middle School

Additional Information

“Census data indicates that there will be 550 middle school aged students on Burke Mountain by 2020”

		550
Percentage – private school 10 %	-55	= 495
Percentage – Programs of Choice 20%	-99	= 396
Minnekhada Middle Current Population	= 425	
Capacity new Minnekhada school	600	
2020 Projection at Minnekhada	<u>502</u>	
	-98	= 298
Current students in the count	-112	= 186
Students to Support a new Middle School		= 186

District Projections

Actual student enrolment for **2017 = 30,391**

2015 we projected 30,397 students for **2017**
= 99.9% accuracy

2013 we projected 29,796 students for **2017**
= 98.0% accuracy

* Review projections regularly and adjust accordingly.



*We all want new schools
for Burke Mountain.*

*....and we're taking
more action.*

Action 7: “Out-of-the-box” Idea

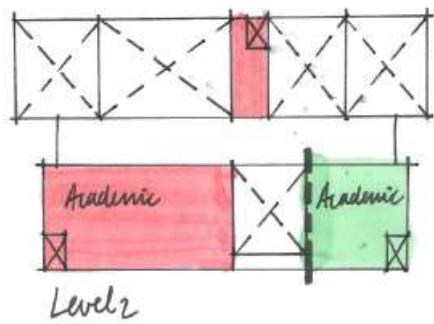
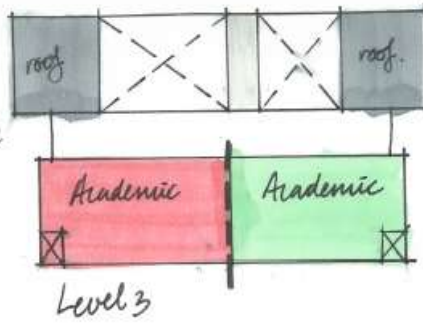
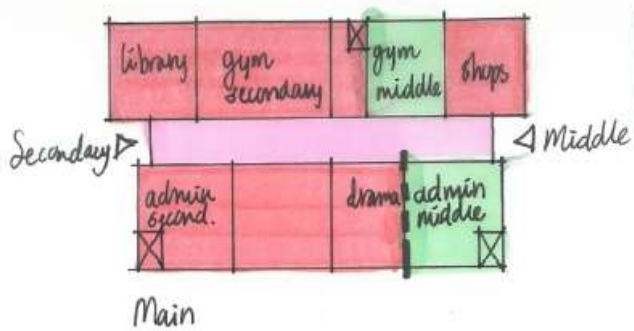
Build a Middle/Secondary in one building as an interim measure:

- Land is owned by SD43 and City of Coquitlam.
- A partnership agreement with City of Coquitlam.
- \$5M Wesbild contribution for artificial turf.
- Speeds up school opening several years earlier.
- Allows a second school to be constructed as population rises.

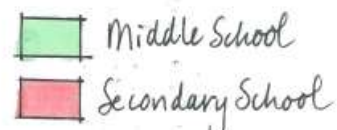
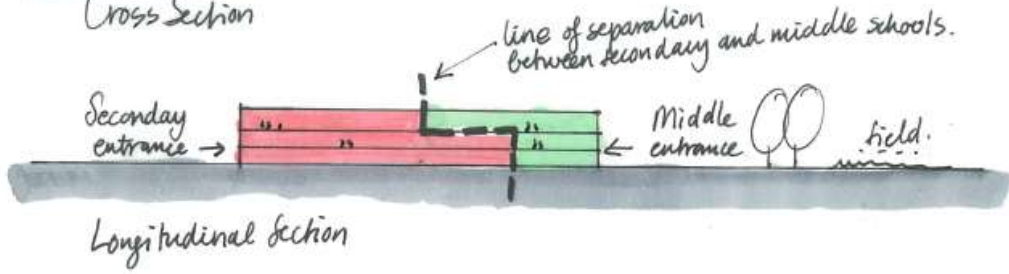
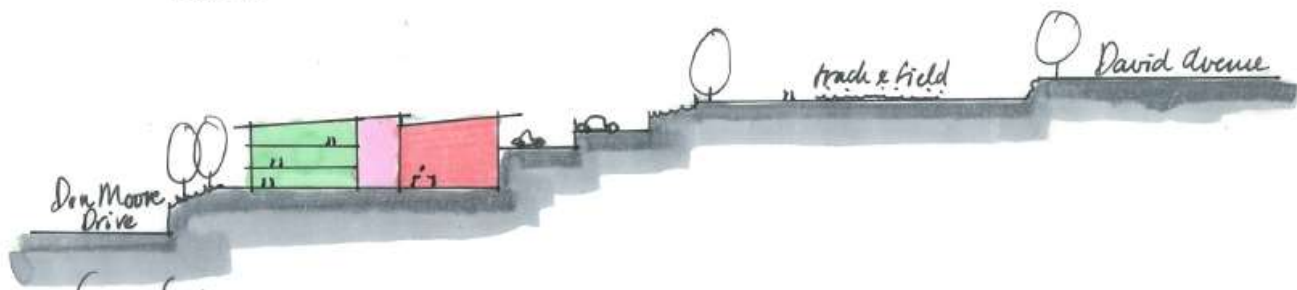
Preserving Middle School Philosophy

Key Parameters Based on Educational Philosophy

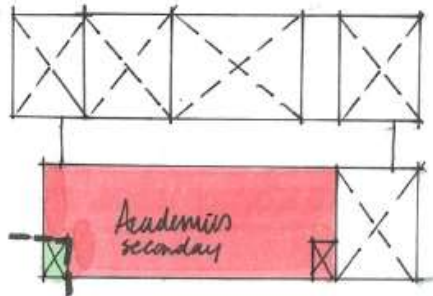
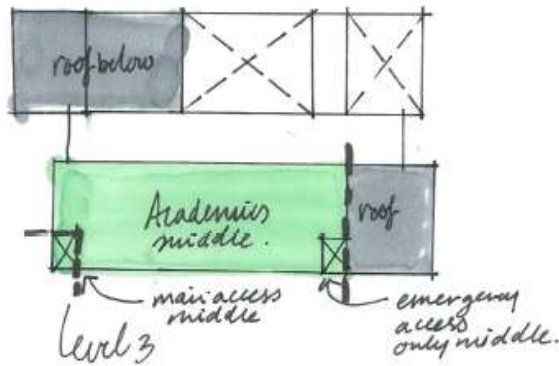
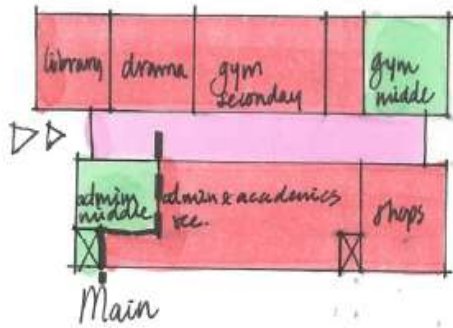
- Preserves middle school model.
- Maximizes physical separation between the two school populations.
- Staggered start and end times.
- Separate main administrative offices, libraries, washrooms, and other spaces for secondary and middle schools.
- Spaces can easily be converted once second school built.
- Times to use elective/exploration shared spaces will be staggered (eg: one school in am, one in pm).



Option 1

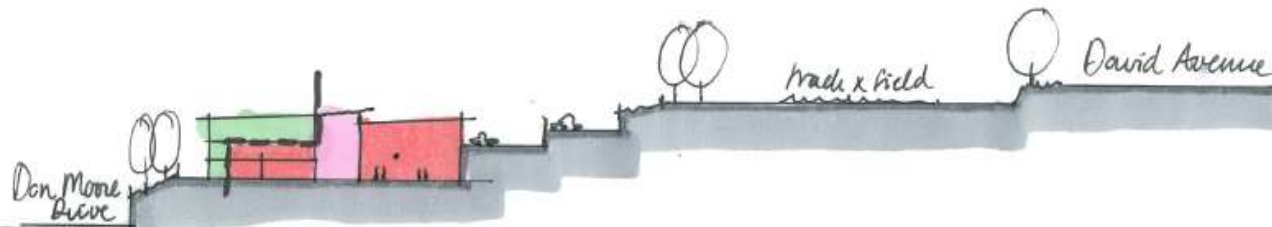


Middle & Secondary entrance combined

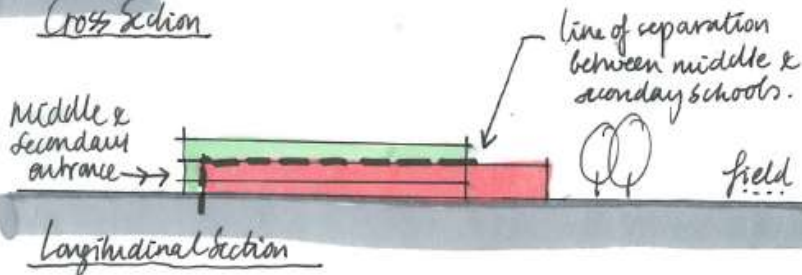


Level 2

Option 2



Cross Section



Longitudinal section

- Middle School
- Secondary School

Advancing the Middle/Secondary School

Ministry of Education Support



October 20, 2017

Ref: 196742

Franco Cocchini, Assistant Secretary-Treasurer
Facilities and Planning Services
School District No. 43 (Coquitlam)
Email: fcocchini@sd43.bc.ca

Dear Mr. Cocchini:

Thank you for your letter dated March 14, 2017, requesting ministerial support for a combined middle and secondary school as an interim measure to address anticipated capacity on Burke Mountain. I sincerely apologize for the lateness of my reply.

I recognize the northeast area of Coquitlam continues to experience student enrolment growth as a result of ongoing residential development, and I am pleased to hear of the District's efforts to secure school sites in collaboration with the City of Coquitlam and Wesbild Holdings Ltd.

The proposal put forward by the School District to construct a combined middle and secondary school appears to be an efficient plan as an interim measure to address the space needs for middle and secondary students on Burke Mountain. As Boards of Education are responsible for making decisions regarding the operation and maintenance of schools, opening, closing and grade reconfiguration of schools within each school district, I do not have the authority to say that the Board should or should not pursue this as an option in their planning.

As you know on June 30, 2017, the Ministry of Education's intake for the Annual Five-Year Capital Plan submissions closed. Ministry staff are currently reviewing the submissions from all 60 school districts to inform our capital planning cycle.

Over the coming months, the Ministry will work to determine priority projects in the programs of:

- Seismic Mitigation;
- School Expansion;
- School Enhancement;
- School Bus Replacement;
- Building Envelope Remediation; and
- Carbon Neutral Capital Improvements.

...2

Ministry of Education	Capital Management Branch	Mailing Address:	Location:
	Resource Management and Innovation, Financial Officer Division	PO Box 9131, 300 Pine Grove Victoria BC V8W 9K1	3775 Pinet, 6201 September St Victoria BC V8V 1V2

Once priorities are established, the Ministry is required to seek approval of our Capital Program in the early New Year, which links with government's overall fiscal cycle. It is our intent to communicate approved priorities in writing with each school district once we have received approval in early 2018.

Sincerely,

Rachelle Ray, Regional Director
Capital Delivery Branch

cc: Damien Crowell, Planning Officer, Capital Management Branch, Ministry of Education
Chris Nicholls, Secretary-Treasurer School District No. 43 (Coquitlam)



Learning for a Lifetime

Advancing the Middle/Secondary School

Ministry of Education Support

Dear Mr. Cecchini:

Thank you for your letter dated March 14, 2017, requesting ministerial support for a combined middle and secondary school as an interim measure to address anticipated capacity on Burke Mountain. I sincerely apologize for the lateness of my reply.

I recognize the northeast area of Coquitlam continues to experience student enrolment growth as a result of ongoing residential development, and I am pleased to hear of the Districts efforts to secure school sites in collaboration with the City of Coquitlam and Wesbild Holdings Ltd.

The proposal put forward by the School District to construct a combined middle and secondary school appears to be an efficient plan as an interim measure to address the space needs for middle and secondary students on Burke Mountain. As Boards of Education are responsible for

Accelerated Timeline Based on Middle/Secondary Model

Projected Timeline for Burke Mountain Schools with Combined Middle/Secondary

School Project	2017	2018	2019	2020	2021	2022	2023	2024	2025	2026	2027
Smiling Creek Elementary	Blue	Blue									
Minnkehada Middle	Green	Blue	Blue	Blue	Blue						
Irvine Elementary	Green	Green	Blue	Blue	Blue						
Sheffield Elementary		Green	Blue	Blue	Blue						
Combined Middle/Secondary			Green	Blue	Blue	Blue	Blue	Blue	Blue	Blue	
Northeast Coquitlam Middle							Green	Blue	Blue	Blue	
Marigold Street Elementary								Green	Blue	Blue	Blue



Projected Timeline for Burke Mountain Schools with No Combined Schools

School Project	2017	2018	2019	2020	2021	2022	2023	2024	2025	2026	2027
Smiling Creek Elementary	Blue	Blue									
Minnkehada Middle	Green	Blue	Blue	Blue	Blue						
Irvine Elementary	Green	Green	Blue	Blue	Blue						
Sheffield Elementary		Green	Blue	Blue	Blue						
Burke Mountain Secondary						Green	Blue	Blue	Blue	Blue	
Northeast Coquitlam Middle							Green	Blue	Blue	Blue	
Marigold Street Elementary								Green	Blue	Blue	Blue



* Combined school helps to minimize portables.

Green = Design. Blue = Construction

* Subject to change.



Learning for a Lifetime

Summary

- We all want schools as quickly as possible for our growing district.
- We have a strong history of capital project successes.
- We have strong relationships with several key partners.
- SD43 school construction is dependent on receiving Government funding and approvals.
- We all continue to advocate for school capital projects.
- We continuously monitor growth and will adjust accordingly.
- Our Board is committed to advancing funds when needed and looking at all out-of-the-box creative solutions to get schools built as soon as possible.

Coming Events and Information

- **Land Sale Public Consultation (3604 Glen Drive)**
Tuesday, November 21st at 6:30pm at Glen Elementary
- **Catchment Area Information Meetings**
Wednesday, November 29th in the Winslow Gym (list of potentially impacted schools will be on our website on November 17th):
 - 5:30 pm – Regular Programs
 - 7:30 pm – Programs of Choice
- **Smiling Creek Catchment Information Meeting**
Thursday, November 30th at 7:00 pm the Leigh Elementary Gym
- **For more information visit:**
www.sd43.bc.ca

Twitter



Facebook



Learning for a Lifetime

Question and Answer Session

- Any attendee can ask a question.
- When prompted, bring your question to the microphone.
- If a line-up begins, form it down the center isle.
- Before asking your question please state your name, where you live, and any group you may be representing.
- In the interest of time, and in order to give everyone the opportunity to ask their question, state your question succinctly.
- Ask only 1 question at a time to allow others to ask questions.
- Allow others to ask a question prior to asking a second question.
- Be courteous and respectful.