



3064 Glen Drive
Coquitlam, BC
Tel: 604-464-6608



École Glen School Newsletter- School Calendar

Friday, October 1, 2016

Take Care of Yourself, Take Care of Each Other and Take Care of this Place

Dear Parents/Guardians,

Congratulations to the entire student and parent community for your work in collecting \$7050.00 for the Terry Fox Foundation and the Marathon of Hope. To celebrate and honour everyone's efforts, Mme. Hansen and Tess Perkins donated their hair to be made into a wig for cancer patients, and I had my hair coloured pink. Finally Mr. Appel was duck taped to the wall. Visit the school website to see photos.

We also cheered for Mrs. Morello's class who was the first class to have 100% of the class participate in the fundraising and Terry's Marathon of Hope. The Terry Fox Foundation has asked schools to focus on participation rather than individual fundraisers to help honour Terry's Dream that every Canadian would donate \$1. While his Marathon has exceeded that goal, the spirit of everyone participating is core value of the Foundation. Thank you also to the parents who volunteered at the school run to help things go smoothly and add to the community spirit. Special thanks to Leah Zille for coordinating the event and fundraising.

Terry Fox is a former student of Glen Elementary. He is an excellent role model for the type of person that we want all Glen students to strive to be. Someone who takes care of themselves, who helps others and contributes to the larger community. Terry was not smarter, more athletic or richer. His parents Betty and Rolly Fox have said many times that Terry was a very average child. He was special in one way, when he wanted to do something he was more determined and hard working than any other person.

Terry's former basketball coach Bob McGill hired me as a teacher in Coquitlam. Bob talk about Terry many times. As a Basketball coach, Bob watched Terry go from a kid sitting on the bench to a starter in high school basketball and then making the basketball team at SFU. Terry did this through hard work and determination.

Terry Fox is our role model for someone who took care of himself, took care of others and took care of the community (this place). These are the words that we use at school to remind all children of the type of behavior that we expect of them.

To help our students succeed with taking care of themselves and others we have also been teaching, [Zones of Regulation](#). Click on the link to read tips for parents. This is an evidence based program that is part of our school focus on self-regulation. The purpose of the program is to teach children a common language to name and describe emotions and to build strategies to move from one zone of emotion to another. Deep breathing is one example of the types of tools that children are learning. This year we are also teaching children and parents about having a growth mindset. A belief that hard work and effort make a difference to learning and success which leads to persisting in the face of a challenge longer.

Sincerely,

Mrs. S. Husband
Principal

Mr. R. Appel
Vice-Principal

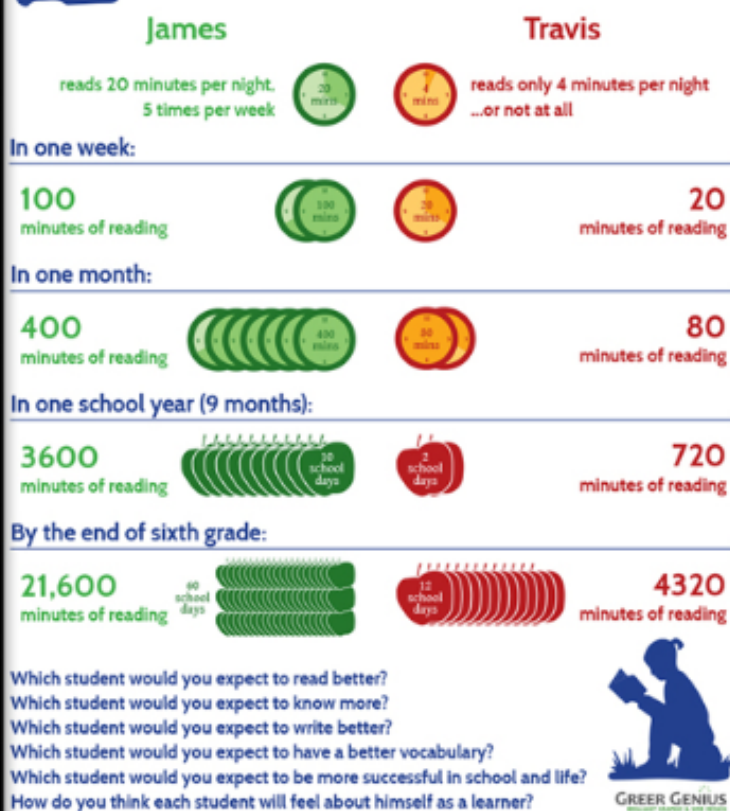
Glen School Four Classroom Addition

Thank you to the parents who attended the information meeting with the school district and contractors on Thursday, Sept 22nd.

Four classrooms, one washroom, storage space and one learning services rooms will be added to the school on the east end of Pipeline. The plans and permits are complete, changes will not be made to the plan. The construction will create some disruption to the school including;

- The entry gate off of Pipeline has been moved south towards the playground
- The construction area will be separated and secured from the school and students at all times
- All workers will have ID at all time.
- Noise will be keep to a minimum as much as possible but there will be noise.
- **Parents, staff and children may not enter the construction site at any time, the site is governed by Work Safe BC regulations.**
- **All questions or concerns should be directed to Sarah Husband, Principal**

Why Your Child Can't Skip Their 20 Minutes of Reading Tonight



Teaching Children to Tell Time

Time is formally taught beginning in Grade 3. Teaching your child to understand the concept of time and read both a digital and analog time (clock with a face) is an important life skill.

Families can help children by talking about time, having your children begin to read time (starting at about age 8) and estimating the length or passage of time. How long was that?

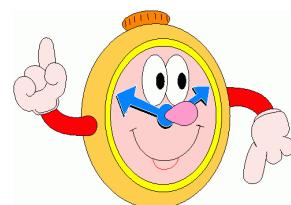
When we teach time on a standard or analog clock we refer the "big hand" as the minutes and the "little hand" as the hour.

Click here for a great link to a clock face.

<http://www.visnos.com/demos/clock>

The following link has creative ideas for making a clock.

<http://www.wikihow.com/Teach-Kids-to-Tell-Time>



HALLOWEEN

We are having our yearly Halloween costume parade on Monday, October 30th.

Parents are welcome to join us **in the gym for the parade at 1pm**. The parade starts at 1pm and winds its way through classes into the gym. The parade will begin entering the gym at about 1:10pm.

Please stand well away from the main entrance and hallways as students come in and out of the gym. It can be very scary for a young child to enter a room/ hallway full of tall people



Individual teachers will be sending home information to parents about any activities planned for their class. If Halloween is a new tradition for your family please ask your friends and neighbours about this is a very special day for children in Canada. The internet has many simple and inexpensive costume ideas. Value Village, Superstore and other thrift stores are also a good place to find costumes or you can make one at home.

When can my child put on their costume?

Kindergarten please arrive to school in the costume

Grade 1-2 children will change into their costume at lunch

Grade 3-5 children can arrive to school in their costume

CHOOSING A COSTUME

When selecting a costume for your child please be sure to choose something that does not make your child seem older than they are. Age appropriate Halloween costumes have become hard to find, especially for girls.

While at school students are not permitted to bring any pretend weapons or things that could accidentally hurt another child. In line ups and classrooms long objects are a hazard. Swords, broom sticks, guns etc need to be left at home and enjoyed while trick or treating.



[Click here](#) for costume ideas

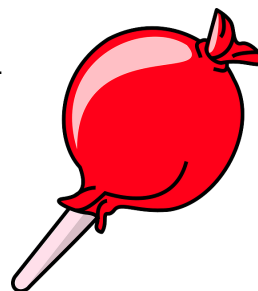
TREATS AT SCHOOL

Our goal each day is to ensure the safety of all students and to maximize student learning. Please help us, help your child succeed.

Please leave all candy and pop at home or allow your child to have candy before coming to school.

Do not send water, fruit, vegetables, wraps or sandwiches. Healthy food helps build healthy minds and helps children self-regulate.

Glen is a nut free school as we have children who are life threatening allergic.



SCHOOL GATE LEADING TO PIPELINE IMPORTANT INFORMATION

This gate has been moved to allow for the start of construction. We ask that you keep the gate leading closed at all times. We have very fast moving special needs children who need the help of the entire community to be safe. Keeping the gate closed is about these children's safety as well as our youngest students. Please take a moment when you are walking through the gate to explain this to your child.

GLEN PAC \$25 TAX- DEDUCTIBLE DONATION

The Glen PAC asked for a \$25 PAC donation instead of the PAC doing any fundraising during the year.

The PAC must have one yearly fundraising to qualify as a PAC for the money that comes from the BC casino funds. The PAC uses the donations to support all of our extra-curricular teams, and school activities.

The PAC encourages each family who has not already done so to make a \$25 donation for each child. A donation of \$25 or more will give your family an income tax receipt, from the School District. Kindly consider donating any amount you can to our wonderful school.

Donation forms have been sent home with your child in September or can be downloaded from our PAC page on the website on the parent board by the gym. Please place cash or a cheque (addressed to Glen Elementary School) in the envelope with the form and return to school with your child as soon as possible.

The PAC is saving to expand the playground. Thanks to a \$10 000 donation from we have \$25 000 saved and need another \$15 000 to buy and install the equipment.

Nut-Free Zone



GLEN SCHOOL IS NUT FREE

WE HAVE A CHILD WITH A LIFE A THREATENING ALLERGY TO ALL NUTS. THIS INCLUDES TOUCHING ITEMS WITH ANY SURFACE WITH NUT OIL

WEST COAST RECESS & LUNCH Dressing for the Weather

Students will go outside at recess and lunch almost every-day even when it is raining.

Students need to bring umbrellas, rain coats and rain boots to school on rainy or cold days.....even if there is the chance of rain .

We ask that parents make sure that students are dressed for our rainy B.C. weather.

Kindergarten to grade 3 children should have a change of clothes at school that can be kept in your child's cloakroom space in case they do get wet, muddy or have an accident (pee their pants).



THIS IS AN IMPORTANT DOCUMENT. PLEASE HAVE IT TRANSLATED

此為重要文件,請翻譯成中文.

이것은 매우 중요한 서류입니다, 정확한 번역을 부탁드립니다.

این مدارک از اهمیت ویژه ای برخوردار است لطفاً ترجمه شده آن را در خواست بفرمایید.

ESTE DOCUMENTO ES MUY IMPORTANTE, POR FAVOR, TRATE QUE SE LO TRADUCIR AL ES-

PAC HOT LUNCH Friday, November 4th

Order forms will be sent home & due back Oct 25th We need parents to help out with...cash counting, packing veggies & or serving lunch!



Email us at camille@datascore.ca or susan.leanne.allen@gmail.com

2016/17 PAC (Parent Advisory Council)

2015/16 PAC	Name	Email
PAC Co Chairs, SPC	Leah Zille & Nadia Shaikh-Naeem	leah@dazil.com nshaikh@gmail.com
PAC Vice Chair & SPC	Nadine Gibb	nadine.gibb@shaw.ca
PAC Secretary	Camille Corej-Tisshaw	camille@datascore.ca
PAC Treasurer	Jeanette Jackson	
PAC Bookfair (Scholastic) not part of the executive	Suzi Allen Camille Corej-Tisshaw	Two new parent coordinators needed for Sept 2017 email susan.leanne.allen@gmail.com

Visit the PAC page on the school website. All parents are welcome anytime to help in any area simply email or speak to someone on the PAC. We also need a parent to coordinate the Terry Fox Run for Sept 2017.

.....**Next PAC meeting - Wednesday, November 9th 8:50am in the PAC kitchen.....**

PAC Volunteering

Parents play a big role in the success of all schools. The Parent Advisory Council (PAC) is a group of elected parent volunteers who work with the school Principal and Vice Principal to improve opportunities for all students.

In addition to these position there are many other school volunteer opportunities. Any amount of time that you can donate helps!

Visit the school web site Parents/ PAC or volunteering.



Thank you to the many parents who signed up for a role on the PAC including class representatives. Class reps help to share information with parents through email. Leah Zille (PAC co chair will prepare a PAC summary after every meeting). We need a class representatives for several divisions and a rep for the Terry Fox Run 2017. Please email the PAC co chairs if you can help.

CALLING ALL RECYCLERS!

The Glen School PAC is working toward a school wide recycling program.

PACIFIC MOBILE DEPOT comes to the Glen parking lot the third Saturday of every month.

Next pick up: Sat, Oct 15th, 2016 9am-12pm



Recycling items

can be dropped for free or a small fee. The small fees are for the service of picking up and distributing the recyclables to the proper facilities.

The Glen PAC receives a portion of the fees collected to help with our school recycling program.

This will help Glen students keep more out of the landfill, and teach the kids environmental resource responsibility!

This is a perfect chance to recycle items that can not be recycled from home. Keep this service in mind when you can't easily recycle or have to travel to recycle, especially families in condos with limited recycling systems or space.

As always, we are looking for Volunteers!!!

Please email Nadine Gibb nadine.gibb@shaw.ca

Retake Picture Day is Coming! Mark your Calendar for our School Picture Day on

NOVEMBER 3rd

Your Picture Retake Day is Coming! Get a second chance to capture the perfect image.

Didn't love your picture? Simply return your Proof Portrait Sheet and Order Form to the Photographer on retake day.

For Tips on preparing for photo day visit www.lifetouch.ca

Questions call Lifetouch at [1-866-457-8212](tel:1-866-457-8212) or email: guestservices@lifetouch.ca

YOUR CHILD'S SAFETY

IMPORTANT TRAFFIC STUDENT SAFETY

- The number one cause of child's injuries are cars.
- Please use the drop off area on Westwood Drive, it has a gate onto the back of Glen School.
- The east end of Glen Drive is drop off only, parents must remain in the car. The City of Coquitlam is ticketing drivers.

OR

- Park a block away and walk your child to the school, **please use the crosswalks.**
- **Many families are crossing on Westwood and Pipeline outside of the crosswalk. We have had several calls from local neighbours concerned about near misses and difficulty seeing children.**
- Glen Drive is 30 km zone.
- The staff parking lot is for staff only, no drop off/pick up.
- Please be a good role model for your young children, they learn street safety from adults.

Thank you for your cooperation in keeping our students and neighbours safe!!!



STUDENT DROP OFF AND PICK UP

- All visitors (including parents) must sign in/out at the office.
- Please do not use the main entrance to "cut through" the school.
- Thank you for labelling and dropping late lunches in the drop off box. This is a BIG help.
- Thank you for waiting outside the school at 8:30am and 2:38 pm
- Please be on time to pick up your child, if in an emergency you will be late- please call.
- Please let the teacher and school know if someone new is picking up your child.

PICK UP

- Grade 2-5 students need to have a meeting place if someone is picking them up. They also should know not to leave the school until that adult comes or to report back to the office.
- K & Grade 1 students are dismissed directly to an adult.
- Children who remain after school must be under the supervision of an adult.

Glen School Calendar 2016-2016

Term one

Grade 5 volleyball starts

Thanksgiving Holiday

Possible PAC Movie Night

First Term Reporting Interim Week

First Term Interim Early Dismissal

Provincial Non-Instructional Day:

Drop Everything and Read Day (DEAR)

PJ Day

Halloween Dress Up

Student Photo Retakes

PAC meeting

Remembrance Day Assembly

Remembrance Day Holiday-

Curriculum Implementation Day-

Possible PAC Movie Night

PAC Santa Breakfast

Winter Performance Dress Rehearsal

Winter Performance

First Term Report Cards sent home

Schools Close for Winter Vacation

Winter Vacation- Students do not attend

Term two

Schools Re-opens

First Term Parent-Teacher Interviews

School Based Professional Day -

Second Term Student Led Conference Early Dismissal

B.C. Family Day Holiday

Real Acts of Care Week

Pink Shirt Day

District Non-Instructional Day

Dance Festival

Schools Close for Spring Vacation

Spring Vacation

Term three

Schools Open

Second Term Report Cards sent home

Second Term Parent-Teacher Conferences

Good Friday Holiday- Students do not attend

Easter Monday Holiday- Students do not attend

District Non-Instructional Day-

Music Monday- (10:00 am outside parents welcome)

Class and Team Photos

Victoria Day Holiday-

School Based Professional Day

Welcome to Kindergarten Meetings English 9am FI 1pm

Current English Kindergarten students start school at 10:30am

Current French Kindergarten students finish school at 12:00pm

Parent Appreciation Tea

Sports Day– parents welcome to watch events

Grade 5 leaving ceremony (time TBA)

Last day for students (dismissal at 2:37 pm)

Final Report Cards sent home

Administrative Day–Students do not attend

Schools Close for Summer Vacation

Monday, October 3, 2016

Monday, October 10, 2016-

Students do not attend

Friday, October 14, 2016

Oct 17– Thurs Oct 20, 2016

Tuesday, October 18, 2016

Early Dismissal 1:38pm

Friday, October 21, 2016 Students do not attend/ office is closed

Monday, October 24, 2016

Monday, October 24, 2016

Monday, October 31, 2016

Thursday, November 3, 2016

Wednesday, November 5, 2016

9:45am PAC Kitchen

Thursday, November 10, 2016

Friday, November 11, 2016

Students do not attend

Monday, November 14, 2016

Students do not attend

Friday, November 25, 2016

Thursday, December 8, 2016

Wednesday, December 14, 2016

Thursday, December 15, 2016

Friday, December 16, 2016

Friday, December 16, 2016

Saturday, December 19, 2016 to Monday, January 2, 2017

Tuesday, January 3, 2017

Tuesday, January 10, 2016

Early Dismissal 1:38 pm

Monday, Jan 30, 2017 Students do not attend/ office is closed

Thursday, February 2, 2017

Early Dismissal 1:38 pm

Monday, February 13, 2017

Students do not attend

Monday, Feb 13 to Friday, Feb 17

Wednesday, February 22, 2017

Friday, Feb 24, 2017 Students do not attend/ office is closed

Friday, March 10, 2017

Friday, March 10, 2017

Sat., March 11 to Sunday, March 26, 2017 Students do not attend

Monday, March 27, 2017

Friday, March 31, 2017

Thursday, April 6, 2017

Early Dismissal 1:38 pm

Friday, April 14, 2017

Monday, April 17, 2017

Friday, April 21, 2017

Students do not attend / office is closed

Monday, May 1, 2017

Thursday, May 18, 2017

Monday, May 22, 2017

Students do not attend

Tuesday, May 23, 2017

Students do not attend/ office is closed

Thursday, June 1, 2017

Tuesday, June 6, 2017 (1:00 pm)

Friday, June 9, 2017

Thursday, June 29, 2017

Thursday, June 29, 2017

Thursday, June 29, 2017

Friday, June 30, 2017

Office closes at 11am

Tuesday, July 4, 2017