



# TRU IT'S ABOUT YOU

2015-16 VIEWBOOK

**140+**  
ON-CAMPUS  
PROGRAMS

**52**  
OPEN LEARNING  
PROGRAMS

**590**  
ONLINE  
COURSES

GRAB A BITE AT 12 ON-CAMPUS HOT SPOTS

**15+**  
DEGREE  
PROGRAMS

1 MILLION SQ FT  
OF LEARNING SPACE &  
40 ACRES OF GREEN

**10** TRADE  
FOUNDATION  
PROGRAMS

**& 26**  
DIPLOMAS &  
CERTIFICATES

**\$2 MILLION**  
IN AWARDS GRANTED TO  
CURRENT STUDENTS

13,170 STUDENTS ON CAMPUS  
IN KAMLOOPS

**96** CLUBS  
ON CAMPUS

**2645+**  
ABORIGINAL  
STUDENTS

**200** IN MORE  
THAN  
STUDY ABROAD  
CHOICES

9 FACULTIES & SCHOOLS

**40**  
COUNTRIES

**12** WOLFPACK  
TEAMS

**7** VARSITY  
TEAMS

**5** ATHLETIC  
CLUBS

UNDERGRADUATE  
RESEARCH

UP TO

191

FUNDED PROJECTS

100% WIRELESS

OVER 250  
BIKING  
ROUTES & TRAILS

YOU DON'T NEED A VEHICLE — TRANSIT STOPS AT THE KAMLOOPS CAMPUS EVERY HALF HOUR

KAMLOOPS  
YOUR

PERFECT  
UNIVERSITY CITY

AFFORDABLE LIVING

4 MAJOR  
HIGHWAYS +  
1 AIRPORT

85,678  
RESIDENTS:  
NOT TOO BIG  
& NOT  
TOO SMALL

POWDER SKIING 100'S OF LAKES MOUNTAIN HIKES  
AND ALL WITHIN ONLY AN HOUR OF CAMPUS

PANORAMIC VIEWS

KAMLOOPS

CULTURE & TRADITION  
17 DISTINCT FIRST  
NATIONS GROUPS  
WITHIN THE SECWEPENC PEOPLE

2000+  
HOURS  
OF SUNSHINE

13 GOLF COURSES WITHIN 45 MINUTES

KAMLOOPS TRU

[tru.ca/visit](http://tru.ca/visit)

**WHERE  
WILL  
TRU  
TAKE  
YOU?**





YOUR  
CHOICE

# EDUCATION

TRU offers flexible learning that fits your lifestyle: study in person, on campus, online or through a regional centre. Many TRU programs offer a combination of learning options to suit your schedule and preference.

**Kamloops**

**[tru.ca](http://tru.ca)**

**Open Learning**

**[truopen.ca](http://truopen.ca)**

**Williams Lake**

**[tru.ca/williamslake](http://tru.ca/williamslake)**

**Regional Centres**

**[tru.ca/regional](http://tru.ca/regional)**

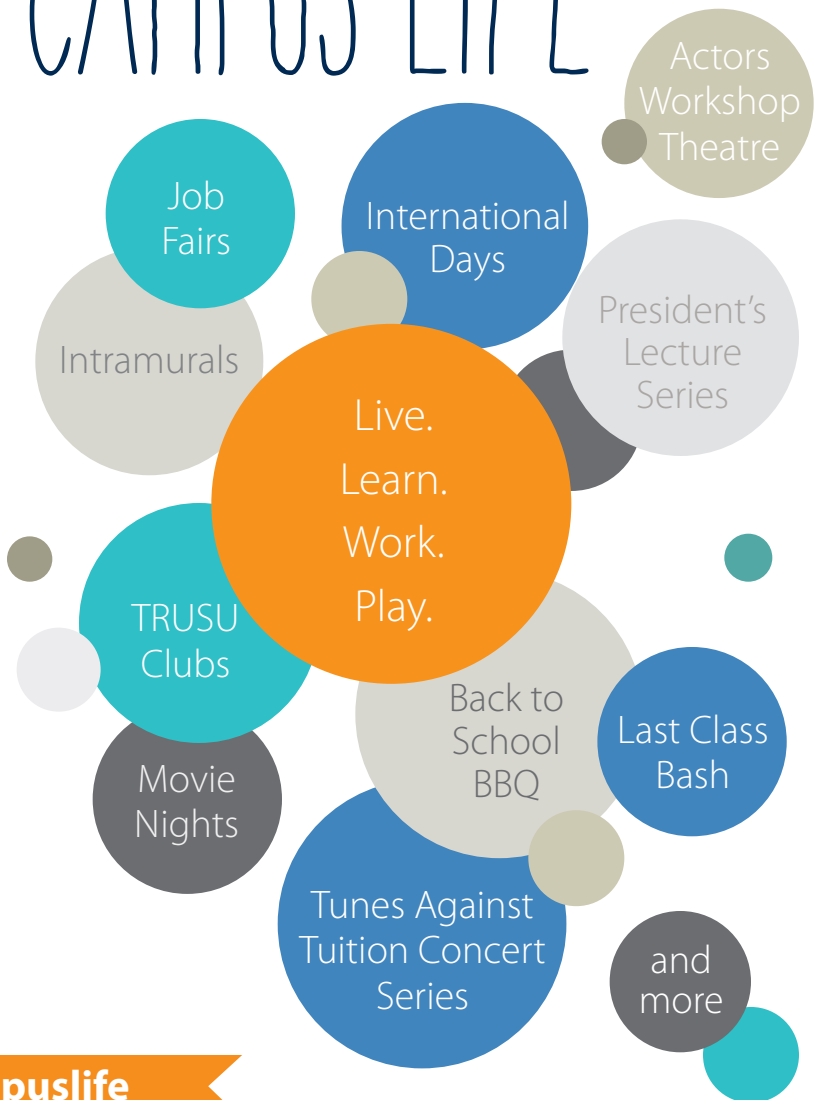




Mother Mother  
Tunes Against Tuition | Campus



# LOVE YOUR FREETIME CAMPUS LIFE



[tru.ca/campuslife](http://tru.ca/campuslife)





# DISCOVER YOUR SUPPORTS

## OPPORTUNITIES

TRU supports you in achieving your individual academic and career aspirations through a wide range of services, and offers opportunities beyond the classroom to enrich your learning experience.

### STUDENTS CORNER

**Student Ambassadors will help you learn your way around campus, timetable your courses, or navigate all the services available to you.**

“

*The university journey is both exciting and challenging. We know our students do best when those around them are able to point them to supports and programs that ensure their success – and we have a lot of those at TRU. From our Students Corner to Career Education and Advising Services, to Recreation, Wellness, and so many more resources, TRU is committed to helping students find their way and meet their goals.*

– Christine Adam, Dean of Students

”

[tru.ca/services](https://tru.ca/services)

IT'S YOUR TIME

ATTITU





## 1

**Choose a Program and Understand its Admission Process**

A list of available programs can be found on pages 21 to 27 or visit [tru.ca/programs](https://tru.ca/programs) for a complete list (including online programs).

Each TRU program uses one of the following three admission processes, as specified on pages 10 to 17:

**Open Admission:**

Admission decisions are made on a first-applied, first-admitted basis for qualified applicants, using the date by which the application was received.

**Limited Admission:**

Admission decisions are made on a first-applied, first-admitted basis, using the date by which applicants have met all of the admission requirements. There are a limited number of seats available in the program and the admission process may include an admission interview, questionnaires, pre-testing, orientations, and letters of reference.

**Selective Admission:**

Competitive programs have a limited number of seats and a pre-determined application deadline, after which all applications are reviewed. Applications will be assessed using criteria that may include admission average standing, an admissions interview, questionnaires, pre-testing, and letters of reference. Following the assessment, offers of admission will be made to selected students.

## 2

**Check Admission Requirements**

The basic requirements for admission to most TRU programs include:

- Completion of BC grade 12 (or equivalent) or mature student status
- BC English 12 or English 12 First Peoples (or equivalent), grade varies from 67–80%

Along with the basic requirements, you will need to meet specific high school course requirements set by each program. See specific requirements on pages 10 to 17.

For a complete list of admission requirements visit:

British Columbia: [tru.ca/admissions/apply/requirements](https://tru.ca/admissions/apply/requirements)  
Out of Province: [tru.ca/admissions/apply/out-of-province](https://tru.ca/admissions/apply/out-of-province)

# 3

## Apply

# STEP

1. Submit your application online through the ApplyBC website – [applybc.ca](https://applybc.ca)– or using the paper application form.
2. Pay the application fee online, or send your payment and ApplyBC application # to TRU Admissions.
  - > \$27.03 for Canadian citizens or permanent residents
  - > \$100 for international students (requires a Study Permit)

**Note:** Your application will be processed upon receipt of your fee.
3. Submit official high school transcripts showing final grades for grade 11 and 12, or an interim grade 12 statement listing courses you are taking this year.
4. Submit any post-secondary transcripts.
5. Submit any required supporting documents (see program-specific requirements on pages 10 to 17).
6. Once you have been admitted, you will have to pay a commitment fee to confirm your spot and enable you to register in courses. For most programs the commitment fee is \$300; for some limited or selective programs it is \$500. Your admission letter will outline details and deadlines.

### Submit transcripts and documents to:

Admission and Registration  
Thompson Rivers University  
900 McGill Road  
Kamloops, BC V2C 0C8

### Need help? Contact us:

Phone: 250.828.5036  
Fax: 250.371.5960  
Email: [admissions@tru.ca](mailto:admissions@tru.ca)

[tru.ca/admissions/apply](https://tru.ca/admissions/apply)

# YOUR IMPORTANT DEADLINES

Arts, Business Administration, Science	
Early Application Deadline	March 1
Regular Deadline	April 30

Program Specific Application Deadlines	
Nursing	January 15
Social Work	January 30
Law	February 1
Animal Health Technology Education (Elementary)	February 15
Journalism	February 15 (early) April 30 (regular)
Natural Resource Science Engineering Transfer	March 1
Interdisciplinary Studies Respiratory Therapy	March 31
Computing Science* Tourism Management Fine Arts/Visual Arts*	April 15
Police and Justice	April 30

\*Applications will continue to be accepted as space permits.

**Note:** Applications for diploma and certificate programs are accepted until program capacity is reached.

# 4

# STEP

## Next Steps

### Scholarships

TRU Entrance Scholarships require a separate application, which must be completed by March 1. Applications become available in December. See page 18 for more information.

[tru.ca/entrance](http://tru.ca/entrance)

### Student Housing

Applications for campus housing are separate from an application to a TRU program. There are two residences to choose from on campus. Apply online. See page 28 for more information.

[tru.ca/housing](http://tru.ca/housing)

### Academic Advising

Advisors are available to help with first and second year course planning, degree requirements and the course registration process.

[tru.ca/advising](http://tru.ca/advising)

## DID YOU KNOW...

### Early Conditional Admission

Current grade 12 students interested in Arts, Science, Computing Science, Business Administration and Tourism Management who present four grade 11 or 12 academic courses, including specific TRU program prerequisites, with an admission average of B (73%) can be considered for early conditional admission.

■ [tru.ca/admissions](http://tru.ca/admissions)

### University Preparation

Students missing specific high school course requirements for TRU programs can take UPrep courses in English, Math, Sciences, Computing, Business, and Social Sciences to upgrade or complete these requirements.

■ [tru.ca/hse/uprep](http://tru.ca/hse/uprep)

### Dual Admission

Apply and be accepted to two post-secondary schools at the same time.

[tru.ca/admissions/apply/dual](http://tru.ca/admissions/apply/dual)

### TRU Start

BC high school students have the opportunity to take one or two TRU courses for both high school and university credit during their grade 12 year.

■ [tru.ca/start](http://tru.ca/start)

### Advanced Standing Programs

IB | Score of 5 or higher in HL Courses\*

AP | Grade of 4 or higher\*

■ [tru.ca/advancedstanding](http://tru.ca/advancedstanding)

\*IB = International Baccalaureate, AP = Advanced Placement, HL = Higher Level



# ADMISSION REQUIREMENTS

## WHAT YOU NEED

### Faculty of Adventure, Culinary Arts & Tourism

The faculty's acronym - ACT- is a fitting reference to the hands-on nature of its programs. The faculty has a strong tradition of providing educational excellence within trades (Culinary Arts and Retail Meat), outdoor education and leadership (Adventure Studies) and innovation and management in tourism (Tourism Management).

Program Name	Program Type	Admissions Process	BC Requirements	Alberta Requirements
Adventure Guide	Diploma	Limited	Grade 12 (or equivalent), English 12 or English 12 First Peoples (67%) or LPI Level 3, Foundations of Math 11 (60%); must be 19 years of age by start of program, must complete separate Adventure Studies application form	Grade 12 (or equivalent), ELA 30-1 (67%) or LPI Level 3, Math 20-2 (60%); must be 19 years of age by start of program, must complete separate Adventure Studies application form
Adventure Management	Diploma	Limited	<b>Adventure Management: English 12 or English 12 First Peoples (73%) or LPI Level 4</b>	<b>Adventure Management: ELA 30-1(73%) or LPI Level 4</b>
Adventure Sport	Certificate	Limited	Grade 10 (grade 12 preferred), Food Safe Level 1, successful Entry Assessment Test', program interview	Grade 10 (grade 12 preferred), Food Safe Level 1, successful Entry Assessment Test', program interview
Culinary Arts	Certificate	Limited	Grade 12 (or equivalent), English 12 or English 12 First Peoples (73%) or LPI Level 5, Foundations of Math 11 (60%)	Grade 12 (or equivalent), ELA 30-1 (73%) or LPI Level 5, Math 20-2 (60%)
Events and Conventions Management	Diploma	Limited	Grade 10 (grade 12 preferred), Food Safe Level 1, successful Entry Assessment Test', program interview	Grade 10 (grade 12 preferred), Food Safe Level 1, successful Entry Assessment Test', program interview
Resort and Hotel Management	Diploma	Limited	Grade 10 (grade 12 preferred), Food Safe Level 1, successful Entry Assessment Test', program interview	Grade 10 (grade 12 preferred), Food Safe Level 1, successful Entry Assessment Test', program interview
Sport Event Management	Diploma	Limited		
Retail Meat Processing	Certificate	Limited		

Tourism Management (BTM)	Degree	Limited	Grade 12 (or equivalent), English 12 or English 12 First Peoples (73%) or LPI Level 5, Foundations of Math 11 (60%) <b>Exit Diploma after two years:</b> Tourism Management Diploma	Grade 12 (or equivalent), ELA 30-1 (73%) or LPI Level 5, Math 20-2 (60%) <b>Exit Diploma after two years:</b> Tourism Management Diploma
Adventure, Entrepreneurship, Management				

## Faculty of Arts

For students with a passion to explore ideas, engage communities and encounter the world - both in and outside the classroom - the Faculty of Arts can be an inspiring choice. The faculty offers programs in the humanities, social science, fine arts, journalism and communications, and is known for its intimate learning atmosphere, great teachers and wide-ranging experiential learning opportunities.

Program Name	Program Type	Admissions Process	BC Requirements	Alberta Requirements
Arts (BA)				
Communications, Economics, Economic & Political Studies, English, Geography and Environmental Studies, History, Mathematics, Mathematics & Economics, Philosophy, Psychology, Sociology, Theatre Arts	Degree	Open	Grade 12 (or equivalent), English 12 or English 12 First Peoples (73%) or LPI Level 5 <b>Recommended:</b> Any second language to grade 12; students interested in Education should take Math 11 or higher (Pre-Calculus, Foundations)	Grade 12 (or equivalent), ELA 30-1 (73%) or LPI Level 5 <b>Recommended:</b> Any second language to the 30 level, students interested in Education should take Math 20 or higher (Math 20-2/30-2, Math 20-1/30-1)
Digital Art & Design	Diploma	Limited	Grade 12 (or equivalent), English 12 or English 12 First Peoples (73%) or LPI Level 4; Art Portfolio (10 design works), letter of intent, computing experience	Grade 12 (or equivalent), ELA 30-1 (73%) or LPI Level 4; Art Portfolio (10 design works), letter of intent, computing experience
Fine Arts (BFA)	Degree	Limited	Grade 12 (or equivalent), English 12 or English 12 First Peoples (73%) or LPI Level 4 <b>Recommended:</b> Any second language to grade 12, students interested in Education should take Math 11 or higher (Pre-Calculus, Foundations)	Grade 12 (or equivalent), ELA 30-1 (73%) or LPI Level 4; <b>Recommended:</b> Any second language to the 30 level, students interested in Education should take Math 20 or higher (Math 20-2/30-2, Math 20-1/30-1)
Interdisciplinary Studies (BIS)	Degree	Selective	Completion of two-year (60 credit) diploma from any Association of Canadian Community Colleges member institution, completion of an Associate of Arts or an Associate of Science degree, or 60 university credits. Min. GPA 2.5	
Police & Justice Studies	Diploma	Selective	Grade 12 (or equivalent), English 12 or English 12 First Peoples (73%) or LPI Level 5, any Math 11, criminal record check	Grade 12 (or equivalent), ELA 30-1 (73%) or LPI Level 5, any Math 20, criminal record check

## School of Business and Economics

The School of Business and Economics is dedicated to delivering high quality programs that are both global in perspective and accessible in design. From certificates and diplomas to the Bachelor of Business Administration and the very flexible TRU MBA, the School of Business and Economics helps learners achieve their full potential in the workplace or through further academic study.

Program Name	Program Type	Admissions Process	BC Requirements	Alberta Requirements
Accounting Technician	Diploma	Limited	Grade 12 (or equivalent), English 12 or English 12 First Peoples (73%) or LPI Level 5, Foundations of Math 12 (67%) or Pre-Calculus Math 12 (67%) <b>Exit Certificate after first year:</b> Business Foundations Certificate	Grade 12 (or equivalent), ELA 30-1 (73%) or LPI Level 5, Math 30-2 (67%) or Math 30-1 (67%) <b>Exit Certificate after first year:</b> Business Foundations Certificate
Administrative Assistant	Certificate	Limited	Grade 11 (grade 12 preferred), ACCUPLACER English Test or English 12 or English 12 First Peoples (67%), typing speed of 25 wpm <b>Exit Certificate after first semester:</b> Business Fundamentals Certificate	Grade 11 (grade 12 preferred), ACCUPLACER English Test or ELA 30-1 (67%), typing speed of 25 wpm <b>Exit Certificate after first semester:</b> Business Fundamentals Certificate
Business Administration (BBA)	Degree	Open	Grade 12 (or equivalent), English 12 or English 12 First Peoples (73%) or LPI Level 5, Foundations of Math 12 (67%) or Pre-Calculus (67%)	Grade 12 (or equivalent), ELA 30-1 (73%) or LPI Level 5, Math 30-2 or Math 30-1 (67%)
General Business, Accounting, Economics, Finance, Human Resource Management, International Business, Marketing, New Venture Creation				
Executive Assistant	Diploma	Limited	Completion of Administrative Assistant Certificate (or equivalent), Foundations of Math 12 (67%) or Pre-Calculus Math 12 (67%)	Completion of Administrative Assistant Certificate (or equivalent), Math 30-2 (67%) or Math 30-1 (67%)
Management	Diploma	Limited	Grade 12 (or equivalent), English 12 or English 12 First Peoples (73%) or LPI Level 5, Foundations of Math 12 (67%) or Pre-Calculus 12 (67%) <b>Exit Certificate after first year:</b> Business Foundations Certificate	Grade 12 (or equivalent), ELA 30-1 (73%) or LPI Level 5, Math 30-2 (67%) or Math 30-1 (67%) <b>Exit Certificate after first year:</b> Business Foundations Certificate



## Faculty of Human, Social & Educational Development

The faculty delivers courses and programs that support students in mastering the skills and knowledge to excel in careers within the fields of education, social and human service and teaching English as a second language (TESL). University preparation and employment preparation are also offered.

Program Name	Program Type	Admissions Process	BC Requirements	Alberta Requirements
Early Childhood Education	Diploma	Limited	Grade 12 (or equivalent), English 12 or English 12 First Peoples (73%) or LPI Level 5, 50 hours of volunteer and/or work experience in a licensed child care facility, First Aid/Food Safe Certificates, interview and reference letters	Grade 12 (or equivalent), ELA 30-1 (73%) or LPI Level 5; 50 hours of volunteer and/or work experience in a licensed child care facility, First Aid/Food Safe Certificates, interview and reference letters
Education Assistant and Community Support	Certificate	Limited	Grade 12 (or equivalent), English 12 or English 12 First Peoples (73%) or LPI Level 5; two reference letters, immunization record, must be 18 years of age on or before December 31st of the fall semester	Grade 12 (or equivalent), ELA 30-1 (73%) or LPI Level 5; two reference letters, immunization record, must be 18 years of age on or before December 31st of the fall semester
Education - Elementary (BEd)	Degree	Selective	Minimum of 90 credits (60 credits for BEd PE) of post-secondary studies acceptable to the School of Education, typically Arts, Fine Arts, Math, Science, Music or Physical Education. Min. GPA 2.67; 100 volunteer hours, reference letters	
Education - Elementary (Physical Education) (BEd-PE)	Degree	Selective		
Education - Trades & Technology (BETT)	Degree	Selective		
Human Service	Diploma	Limited	Visit <a href="http://www.tru.ca/hse/education/bett/admissions">www.tru.ca/hse/education/bett/admissions</a> for more information Grade 12 (or equivalent), English 12 or English 12 First Peoples (73%) or LPI Level 4, two reference letters, applicant must be 19 years of age on or before December 31st of the fall semester	Grade 12 (or equivalent), ELA 30-1 (73%) or LPI Level 4, two reference letters, applicant must be 19 years of age on or before December 31st of the fall semester
Social Work (BSW)	Degree	Selective	Minimum 54 credits of post-secondary studies in Liberal Arts/Social Science courses (min. 2.33 GPA), or completion of a Human Service Certificate/Diploma (min. 2.67 GPA), and TRU Social Work 2060 and 2120 (or equivalent), three credits in composition English or six credits in English Literature	

## Faculty of Law

One of Canada's newest law schools offers the Juris Doctor to students with a strong academic track record. With its state-of-the-art facility, modern law library and internationally renowned faculty and staff, the Faculty of Law is dedicated to teaching students to know and understand law, master the realities of practice and be prepared to serve the profession of law and the interests of justice wherever they go.

Program Name	Program Type	Admissions Process	BC Requirements	Alberta Requirements
Law - Juris Doctor (JD)	Degree	Selective	Obtained an undergraduate degree or successfully completed the first three years (min. 90 credits) or more of an undergraduate degree; official transcripts, LSAT score, personal statement, 3 letters of reference, any other supplemental documents required by your selected category of admissions	

## School of Nursing

The need continues to grow for quality healthcare, extended to individuals in their homes or in a health care facility. TRU's nursing program responds with a program built on a solid foundation of learning, both in the classroom and lab and directly from patients. Nursing is an opportunity to learn from dedicated professors and fellow students, from professionals and, most important of all, those who require care.

Program Name	Program Type	Admissions Process	BC Requirements	Alberta Requirements
Health Care Assistant	Certificate	Limited	Grade 11 (grade 12 preferred), English Assessment Test <sup>1</sup> at grade 11 level, Food Safe, Red Cross Standard First Aid (or equivalent) with CPR Level C	Grade 11 (grade 12 preferred), English Assessment Test <sup>1</sup> at the Grade 11 level, Food Safe and Red Cross Standard First Aid (or equivalent) with CPR Level C
Nursing (BSN)	Degree	Selective	Grade 12 (or equivalent), English 12 or English 12 First Peoples (73%) or LPI Level 5, Foundations of Math 12 (preferred) (67%) or Pre-Calculus 12 (67%), Chemistry 11 (67%), Biology 12 (67%), one other Science 11 or 12 (67%); letter of introduction	Grade 12 (or equivalent), ELA 30-1 (73%) or LPI Level 5, Math 30-2 (preferred) (67%) or Math 30-1 (67%), Chemistry 20 (67%), Biology 30 (67%), one other Science 20 or 30 (67%); letter of introduction
Practical Nursing	Diploma	Selective	Grade 12 (or equivalent), English 12 or English 12 First Peoples (73%) or LPI Level 5, Foundations of Math 11 (60%), Human Anatomy and Physiology for Practical Nurses (67%), <b>Next intake Fall 2016, WL only</b>	Grade 12 (or equivalent), ELA 30-1 (67%) or LPI Level 5, Foundations of Math 20-2 (60%), Human Anatomy and Physiology for Practical Nurses (67%). <b>Next intake Fall 2016, WL only</b>

## Faculty of Science

At TRU, science students benefit from practical, hands-on experience across a spectrum of science disciplines, as well as opportunities to work with nationally and internationally recognized professor-researchers in their research laboratories. Graduates have gone on to graduate school and careers in fields as diverse as medicine, health care, mining, wildlife management, respiratory therapy, teaching and more.

Program Name	Program Type	Admissions Process	BC Requirements	Alberta Requirements
Animal Health Technology	Diploma	Selective	Grade 12 (or equivalent), English 12 or English 12 First Peoples (67%), Foundations of Math 11 (67%), Biology 11 (67%), Chemistry 11 (67%), min. one grade 12 Science (67%); min. two weeks volunteer experience in veterinary facility, references, completed questionnaire <b>Recommended:</b> Biology 12	Grade 12 (or equivalent), ELA 30-1 (67%), Math 20-2 (67%), Biology 20 (67%), Chemistry 20 (67%); min. one 30 Science (67%); min. two weeks volunteer experience in veterinary facility, references, completed questionnaire <b>Recommended:</b> Biology 30
Architectural & Engineering Technology	Diploma	Limited	Grade 12 (or equivalent), English 12 or English 12 First Peoples (73%) or LPI Level 5, Foundations of Math 12 (67%) or Pre-Calculus 11 (67%), Physics 11	Grade 12 (or equivalent), ELA 30-1 (73%) or LPI Level 5, Math 30-2 (67%) or Math 20-1 (67%), Physics 20
Computing Science	Diploma	Limited	Grade 12 (or equivalent), English 12 or English 12 First Peoples (73%) or LPI Level 4, Foundations of Math 12 (67%) or Pre-Calculus 12 (67%)	Grade 12 (or equivalent), ELA 30-1 (73%) or LPI Level 4, Math 30-1 (67%)
Computing Science (BCS)	Degree	Open	Grade 12 (or equivalent), English 12 or English 12 First Peoples (73%) or LPI Level 4, Foundations of Math 12 (67%) or Pre-Calculus 12 (67%) or Coordinator's permission	Grade 12 (or equivalent), ELA 30-1 (73%) or LPI Level 4, Math 30-2 (67%) or Math 30-1 (67%) or Coordinator's permission
Engineering Transfer	Degree	Selective	Grade 12 (or equivalent), English 12 or English 12 First Peoples (73%) or LPI Level 5, Pre-Calculus 11 (73%) and Pre-Calculus 12 (73%), Chemistry 11 (73%), Physics 11 (73%) and Physics 12 (73%) <b>Recommended:</b> Calculus 12, Chemistry 12, Computing or InfoTech 12	Grade 12 (or equivalent), ELA 30-1 (73%) or LPI Level 5, Math 20-1 (73%) and Math 30-1 (73%), Chemistry 20 (73%), Physics 20 (73%) and Physics 30 (73%) <b>Recommended:</b> Pure Math 30, Chemistry 30, CTS Computing Science
Natural Resource Science (BNRS)	Degree	Selective	Grade 12 (or equivalent), English 12 or English 12 First Peoples (73%) or LPI Level 5, Pre-Calculus 12 (67%), Chemistry 11 (67%), Biology 11 (67%); cumulative GPA of at least 2.00 overall high school/post-secondary courses <b>Recommended:</b> All three Science 12 courses	Grade 12 (or equivalent), ELA 30-1 (73%) or LPI Level 5, Math 30-1 (67%), Chemistry 20 (67%), Biology 20 (67%); cumulative GPA of at least 2.00 overall high school/post-secondary courses <b>Recommended:</b> All three Science 30 courses



## Faculty of Science continued

Program Name	Program Type	Admissions Process	BC Requirements	Alberta Requirements
Science (BSc)				
Cellular, Molecular & Microbial Biology, Ecology & Environmental Biology, Chemistry, Chemical Biology, Animal Biology, Biology (General), Computing Science, Computing Science & Mathematics, Environmental Chemistry, Pre-professional Health Science, Mathematics, Mathematics & Economics, Physics	Degree	Open	Grade 12 (or equivalent), English 12 or English 12 First Peoples (73%) or LPI Level 5, Pre-Calculus 12 (67%), Physics 11 (67%), Chemistry 11 (67%), Biology 11 (67%) or Biology 12 (67%)	Grade 12 (or equivalent), ELA 30-1 (73%) or LPI Level 5, Math 30-1 (67%) or Pure Math 30 (67%), Physics 20 (67%), Chemistry 20 (67%), Biology 20 (67%) or Biology 30 (67%)
Respiratory Therapy	Diploma	Selective	Grade 12 (or equivalent), English 12 or English 12 First Peoples (67%), Foundations of Math 12 (preferred) (67%), Chemistry 12 (67%), Biology 12 (67%), Physics 11 (67%), CPR-C Certificate	Grade 12 (or equivalent), ELA 30-1 (67%), Math 30-2 (preferred) (67%), Chemistry 30 (67%), Biology 30 (67%), Physics 20 (67%), CPR-C Certificate

## School of Trades & Technology

TRU's School of Trades & Technology offers trades training programs that result in provincial Industrial Training Authority or Red Seal Certification. A wide range of Construction and Mechanical Trades training is offered at the Foundation and Apprenticeship levels. "Trades & Tech" also offers opportunities to earn credentials in Professional Driver Training, Water & Wastewater education, and Horticulture as well as degrees in Trades & Technology Leadership and Management.

Program Name	Program Type	Admissions Process	BC Requirements	Alberta Requirements
Construction and Mechanical Trades - Foundation				
Automotive Service Technician, Carpentry/Joinery (Cabinet Maker), Carpenter, Heavy Mechanical, Electrician - Construction, Electrician/Industrial Instrumentation Mechanic, Metal Fabricator, Partsperson & Warehousing, Plumbing/Pipefitter, Trowel, Welding	Certificate	Limited	Successful Entry Assessment Test <sup>1</sup> <b>Recommended:</b> Grade 12 (or equivalent), English 12, Math 11, Physics 11 or Science and Technology 11	

Construction and Mechanical Trades - <b>Apprenticeship</b>	Apprenticeship	Limited	Must be working in your trade, indentured/sponsored by your employer (valid ITA number)
Horticulture	Certificate	Limited	Grade 12 (or equivalent), applicants must attend an orientation session <b>Recommended:</b> Applicants should be in good physical condition and should have a strong desire for hands-on work with plant materials
Horticulture Management	Diploma	Limited	Completion of TRU Certificate in Horticulture or equivalent approved by Chairperson, Construction Trades Programs
Waste and Wastewater Utilities	Certificate	Limited	Grade 12 (or equivalent) <b>Recommended:</b> Math 11 and Chemistry 11
Waste and Wastewater Technology	Diploma	Limited	Grade 12 (or equivalent), English 12 or English 12 First Peoples (73%) <b>Recommended:</b> Foundations of Math 11, Chemistry 11 and Biology 11

<sup>1</sup>for information on the Accuplacer/Entry Assessment Test visit [tru.ca/assessment](http://tru.ca/assessment)



**83%** **said** <sup>the</sup> **knowledge, skills, & abilities acquired during their education was useful in their job**



**Average class size for academic courses**

**21**



# PLANNING

## MONEY AT TRU

Know your costs:  
Eight months of study (5 courses per semester)

I am a:	Tuition (full-time)	Student Fees	Total (per year)
Degree, diploma or certificate student	\$3,906	\$1,000	\$4,906
Trades (foundation) student	\$365/mo	\$167.50/mo	\$4,260
International student	\$15,800	\$988	\$16,788
Additional Fees			
Books and supplies		\$1,000 - \$2,000	
Residence		\$4,100 - \$6,650	
Medical and Dental (can opt out if you have comparable coverage)		\$248	

**Note:** Fees are based on the 2014/2015 academic year and are subject to change. Lab Fees not included. Costs may vary depending on campus (Kamloops, OL, Williams Lake, Regional Centres), program, course load, method of transportation and housing choice.

[tru.ca/admissions/fees](http://tru.ca/admissions/fees)

### AMBASSADOR'S ENTRANCE SCHOLARSHIP

LEADERSHIP + ACADEMIC EXCELLENCE  
+ COMMUNITY SERVICE =

**\$22,000**

### LEADERSHIP ENTRANCE SCHOLARSHIP

LEADERSHIP + COMMUNITY SERVICE +  
ACADEMIC PERFORMANCE =

**\$4,000**

### PRESIDENT'S ENTRANCE SCHOLARSHIP

ACADEMIC EXCELLENCE =

**\$4,000**

**\$10,000**



in Transfer Scholarships

### COMMUNITY SERVICE ENTRANCE SCHOLARSHIP

COMMUNITY SERVICE +  
ACADEMIC PERFORMANCE =

**\$1,000**

DEADLINE TO APPLY: MARCH 1, 2015

[tru.ca/entrance](http://tru.ca/entrance)

Visit [tru.ca/awards](http://tru.ca/awards) for detailed scholarship criteria.



CASH  
EXTRA

\$\$\$ SUPPORT

Our Student Awards & Financial Support office can help with:

Government student loans & grants
Out of province loans & grants
Part-time student grants
Student work study programs
Upgrading course grants
Fee deferrals
Awards applications

Phone: 250.828.5024  
Email: [awards@tru.ca](mailto:awards@tru.ca)

[tru.ca/awards](http://tru.ca/awards)



YOU CAN GO FAR

IF YOU THINK IT

Melissa D. | 8:28AM | ISEP | TRU Study Abroad exchange:  
Alfred University, New York City



WHERE  
DO  
YOU  
BEGIN?

GREAT CHOICES AT TRU  
YOU HAVE

# PROGRAMS

TRU has a program list as wide open as our views. For a complete list including minors, post baccalaureates, graduate programs and Open Learning, check out [tru.ca/programs](http://tru.ca/programs).

- |                      |                          |
|----------------------|--------------------------|
| <b>M</b> Major       | <b>G</b> Graduate Degree |
| <b>D</b> Degree      | <b>A</b> Apprenticeship  |
| <b>Di</b> Diploma    | <b>F</b> Foundation      |
| <b>C</b> Certificate |                          |

## Accounting **M** | BBA

School of Business & Economics

A demanding program that prepares students to become an integral part of an organization's financial management team or to enter public practice as an auditor, tax specialist, or consultant. Governments, non-profits, major corporations, small businesses, and high-worth individuals all need accountants to manage their financial affairs.

> [tru.ca/bba](http://tru.ca/bba)

## Accounting Technician **Di**

School of Business & Economics

Students learn to become accounting paraprofessionals who assist professional accountants in industry and public practice doing much of the support work. Graduates of the diploma can ladder into the TRU business administration degree.

> [tru.ca/accounting](http://tru.ca/accounting)

## Administrative Assistant **C**

School of Business & Economics

Learn how to become a key employee in organizations by gaining excellent communication skills, becoming a positive and flexible team player and learning to be proficient in a variety of software applications for a wide range of business.

> [tru.ca/assistant](http://tru.ca/assistant)

## Adventure Guide **Di**

Faculty of Adventure, Culinary Arts, and Tourism

Interested in working as outdoor skills instructors, mountain or river guides, and in other wilderness-related leadership occupations? Learn from one of the world's best known guide training programs which sets the standard for training in areas such as white-water, ocean, climbing and ski guides.

> [tru.ca/adventure](http://tru.ca/adventure)

## Adventure Management **Di**

Faculty of Adventure, Culinary Arts, and Tourism

Gain knowledge in a broad background of the management of adventure activities and have the opportunity to develop personal adventure sport skills. It focuses on wilderness environment, communication and marketing, accounting, expedition planning, leadership, legal liability and risk management subject matter.

> [tru.ca/adventure](http://tru.ca/adventure)

## TRU DEGREES

**BA:** Bachelor of Arts

**BBA:** Bachelor of Business Administration

**BCS:** Bachelor of Computing Science

**BEd:** Bachelor of Education

**BEd - PE:** Bachelor of Education - Physical Education

**BETT:** Bachelor of Education in Trades and Technology

**BFA:** Bachelor of Fine Arts

**BHSc:** Bachelor of Health Science

**BIS:** Bachelor of Interdisciplinary Studies

**BJour:** Bachelor of Journalism

**BNRS:** Bachelor of Natural Resource Science

**BSc:** Bachelor of Science

**BScN:** Bachelor of Science in Nursing

**BSW:** Bachelor of Social Work

**BTM:** Bachelor of Tourism Management

Visit  
**truopen.ca**  
for distance  
learning programs  
and courses.

## Adventure Sports

Faculty of Adventure, Culinary Arts, and Tourism

Explore a career in adventure related fields such as canoeing, rock climbing, ice climbing, mountaineering, whitewater kayaking and more. Graduates can continue into the second year of any adventure diploma. > [tru.ca/adventure](https://tru.ca/adventure)

## Animal Biology | BSc

Faculty of Science

Study animals in an ecological and evolutionary context. Learn all aspects of biology before specializing in animal and ecological areas in marine and terrestrial environments. The program involves extensive field and laboratory experiences. > [tru.ca/bsc](https://tru.ca/bsc)

## Animal Health Technology

Faculty of Science

Designed to train students for employment as professionals in the field of veterinary medicine. Develop skills to work in diagnostic testing, radiography, medical procedures, office protocol, animal nursing, anesthesia, and surgical assistance alongside veterinarians and veterinary scientists. > [tru.ca/aht](https://tru.ca/aht)

## Architectural and Engineering Technology

Faculty of Science

This nationally accredited (with CTAB) diploma will arm you with knowledge in building design using 3D modeling software, building regulations and construction management. Emphasis is on student design projects for architectural buildings as well as electrical, plumbing, lighting, and HVAC systems design. > [tru.ca/aret](https://tru.ca/aret)

## Arts, Bachelor of | BA

Faculty of Arts

An excellent way to begin the experience of university for students who want to explore their options. It offers a broad, liberal arts education that combines a concentration in at least one discipline while ensuring a wide selection of courses. > [tru.ca/ba](https://tru.ca/ba)

## Automotive Service Technician

School of Trades and Technology

Learn how to examine, test and repair the parts and systems on cars and light trucks. It is a nationally designated trade under the Inter-provincial Red Seal program. > [tru.ca/trades](https://tru.ca/trades)

## Biology General | BSc

Faculty of Science

Build a strong foundation in all aspects of biology with maximum flexibility. Students can choose courses to match their interests giving them the ability to tailor their education. The program involves extensive field and laboratory experiences. > [tru.ca/bsc](https://tru.ca/bsc)

## Business Administration, Bachelor of | BBA

School of Business & Economics

Offering both a broad university experience and the opportunity to specialize, business students develop a solid foundation in the first two years after which they can specialize in specific areas. > [tru.ca/bba](https://tru.ca/bba)

## Business Administration-General | BBA

School of Business & Economics

Designed for students who do not wish to specialize in a specific area of business but instead would like to take a wider array of courses to provide a wide range in their management education. > [tru.ca/bba](https://tru.ca/bba)

## Canadian Mountain and Ski Guide

Faculty of Adventure, Culinary Arts, and Tourism

Achieve a professional certification within the disciplines of Mountain Guide, Hiking Guide or Climbing Instructor through training courses and exams which certify guides and instructors. > [tru.ca/adventure](https://tru.ca/adventure)

## Carpentry

School of Trades and Technology

Obtain skills to be able to erect forms for concrete, wood and metal frame construction and use plans and instruments to prepare for excavating and shoring. Also learn how to direct concrete placement, and install exterior and interior finish materials such as siding, doors, windows and cabinets. > [tru.ca/trades](https://tru.ca/trades)

## Carpentry/Cabinet Maker (Joiner)

School of Trades and Technology

Prepares students for employment in the trade. Students spend approximately 60% of their time building various projects in the shop, giving them the opportunity to become proficient in basic carpentry and joinery woodworking skills. > [tru.ca/trades](https://tru.ca/trades)

## Cellular, Molecular and Microbial Biology | BSc

Faculty of Science

Obtain extensive exposure to the cutting edge of modern biology focusing on biology at the smallest scale. Build a strong foundation in all aspects of biology before specializing in biochemical techniques, regulation of gene expression, biotechnology, and microbiology. The program involves extensive laboratory experiences. > [tru.ca/bsc](https://tru.ca/bsc)

## Chemical Biology | BSc

Faculty of Science

Combines chemistry and molecular biology in a way that prepares students for the explosion of knowledge of life at the molecular level. Students learn to apply chemical principles and knowledge to biological applications, and study both chemistry and biology before specializing in various aspects of chemistry, biochemistry or molecular biology. > [tru.ca/bsc](https://tru.ca/bsc)

## Chemistry | BSc

Faculty of Science

Develop a strong understanding of the fundamental concepts in analytical, organic, inorganic and physical chemistry. Emphasis is placed on practical, hands-on experience on modern scientific instrumentation and students are often involved in research and outreach activities. > [tru.ca/bsc](https://tru.ca/bsc)

## Commercial Transport Vehicle Mechanic

School of Trades and Technology

Gain skills to be able to maintain, rebuild, overhaul, recondition, and have the ability to do diagnostic troubleshooting of motorized commercial truck, bus, and road transport equipment. > [tru.ca/trades](https://tru.ca/trades)

## Communications | BA

Faculty of Arts

Students choose to focus on either Public Relations or New Media Studies. Study and practice from multiple perspectives: processes, production, composition, design, broadcasting, policy/law, and criticism. > [tru.ca/journalism](https://tru.ca/journalism)

## Computing Science | BSc

Faculty of Science

Designed for those wishing to enter a career in the technology industry, or for those wishing to pursue graduate studies, this degree consists of two years of general study, followed by two years of concentrated computing studies. > [tru.ca/bsc](https://tru.ca/bsc)

## Computing Science

### Faculty of Science

Emphasizes the application of computers to the solution of business related problems. The academic training combines technical and computer skills with communication and business skills. > [tru.ca/compsci](https://tru.ca/compsci)

## Computing Science, Bachelor of | BCS

### Faculty of Science

Study this interesting and challenging career field that is more than just programming software. Students learn hardware design, system architecture, operating system structure, database design, and modelling and simulation. > [tru.ca/bcsc](https://tru.ca/bcsc)

## Computing Science & Mathematics | BSc

### Faculty of Science

This program is designed for students interested in a degree that combines the two disciplines. Co-op placements or graduate opportunities would exist in the areas of education, research, video game development, modelling and simulation, software development, cryptography, data analysis, etc. > [tru.ca/bsc](https://tru.ca/bsc)

## Culinary Arts

### Faculty of Adventure, Culinary Arts, and Tourism

Learn the trade in an excellent, hands-on environment that includes international quality gourmet food preparation for a public cafeteria located on campus. > [tru.ca/culinary](https://tru.ca/culinary)

## Digital Art and Design

### Faculty of Arts

Prepare for a career within the field of computer graphics for print and web design. This program includes courses in graphic development and illustration, desktop publishing, digital pre-press, print-based communication, and online publishing, as well as fine arts and marketing courses. > [tru.ca/design](https://tru.ca/design)

## Early Childhood Education

### Faculty of Human, Social and Educational Development

Provides a mix of child development theory plus hands on experience in both on campus and community-based childcare programs. There are three semesters of study and specializations in Infant/Toddler and/or Special Needs are available in the fourth semester. > [tru.ca/ece](https://tru.ca/ece)

## Ecology & Environmental Biology | BSc

### Faculty of Science

Acquire knowledge in the many facets of ecology and conservation biology. Students receive a strong grounding in all aspects of biology before specializing in terrestrial or marine ecology. The program involves extensive field and laboratory experiences. > [tru.ca/bsc](https://tru.ca/bsc)

## Economics | BA, BBA

### School of Business & Economics

Obtain an understanding of the core body of knowledge within economics. Skills and abilities that this program teaches include evaluative and critical thinking, analytics, learning skills, cooperation, effective oral and written communications, and strong research and decision-making skills. > [tru.ca/economics](https://tru.ca/economics)

## Economics and Political Studies | BA

### Faculty of Arts

Economics and politics is “the study of choices” and thus it is concerned with all areas of our lives. It provides rigorous analysis of many real world subjects: government institutions, taxes, unemployment, financial markets, international trade, development, and economic growth but also poverty, crime, pollution, healthcare, education, the environment and many other areas. > [tru.ca/ba](https://tru.ca/ba)

## Education, Bachelor of (Elementary) | BEd

### Faculty of Human, Social and Educational Development

Graduates earn a professional teaching certificate from the BC College of Teachers, certifying them to teach in any elementary school setting – public, independent, private, religious, and First Nations – and are eligible to teach secondary school. An extensive teaching practicum experience at schools in the BC Interior is provided to enhance your studies. > [tru.ca/edb](https://tru.ca/edb)

## Education, Bachelor of (Elementary - Physical Education) | BEd-PE

### Faculty of Human, Social and Educational Development

Students complete two years of university courses, then enter a year of Physical Education courses, followed by the regular two-year Bachelor of Education curriculum in a ‘2+3’ model. > [tru.ca/physed](https://tru.ca/physed)

## Education in Trades and Technology, Bachelor of | BETT

### Faculty of Human, Social and Educational Development

An applied degree designed to prepare graduates to teach in middle and secondary schools in technical and trades related areas. > [tru.ca/bett](https://tru.ca/bett)

## Education Assistant and Community Support

### Faculty of Human, Social and Educational Development

This program prepares graduates to work with people who have exceptional needs, and help them acquire educational, social, vocational, recreational, and personal life skills. > [tru.ca/eacs](https://tru.ca/eacs)

## Electrical - Construction

### School of Trades and Technology

Become skilled in installing and troubleshooting all the related electrical equipment for residential, commercial and industrial construction projects. Graduates will work for a company or can be self-employed. > [tru.ca/trades](https://tru.ca/trades)

## Electrical - Industrial

### School of Trades and Technology

Become skilled in maintaining, troubleshooting and repairing all related electrical equipment in industrial settings such as pulp mills, sawmills, mines, manufacturing plants, oil & gas distribution systems, lighting, fire alarms, motor control components, motors, generators, programmable logic controllers, DC and AC power systems, and DC and AC speed drives. > [tru.ca/trades](https://tru.ca/trades)

## Electrician/Instrumentation Mechanic

### School of Trades and Technology

The province's first ever dual trade foundation program. Trades persons with technical skills in both electrical and instrumentation are becoming increasingly important to meet the technical challenges of the modern industrial workplace. The program will prepare students entering the industrial workplace in electrical and/or instrumentation fields. > [tru.ca/trades](https://tru.ca/trades)

## Engineering Transfer (year 1)

### Faculty of Science

A year of general study common to all engineering disciplines, this program enables students to transfer into the second year of a full engineering program at either the University of British Columbia or the University of Victoria. > [tru.ca/et](https://tru.ca/et)

## English **M** | BA

### Faculty of Arts

A comprehensive study of historical and contemporary world literature in English. Students explore poetry, prose, drama and their own creative writing, and practice textual analysis through critical thinking and theoretical approaches. Reading and writing skills are essential to any profession, and literary studies cultivate an intellectual, emotional, and moral imagination for citizenship in a global context. > [tru.ca/ba](http://tru.ca/ba)

## Environmental Chemistry **M** | BSc

### Faculty of Science

Study the chemical processes taking place in the environment as a result of human activities including urban air and water pollution, depletion of ozone layer, production of toxic substances from chemical wastes, prevalence of pesticides, and climate change. Learn the fundamentals to accurately assess human activities in the environment. > [tru.ca/bsc](http://tru.ca/bsc)

## Events and Conventions Management **Di**

### Faculty of Adventure, Culinary Arts and Tourism

Gain a practical overview of the functions, skills and knowledge required to successfully plan, organize, manage, promote and evaluate a festival, convention, trade show or special event. > [tru.ca/ecm](http://tru.ca/ecm)

## Executive Assistant **Di**

### School of Business & Economics

Prepares students to serve in more senior positions as office managers and assistants to senior executives in both industry and government. After completing the TRU Administrative Assistant Certificate in year one or an equivalent office administration program, students take additional courses in accounting, communications, marketing, law, and management in year two. > [tru.ca/assistant](http://tru.ca/assistant)

## Finance **M** | BBA

### School of Business & Economics

A demanding program that prepares students to play an important role in the financial industry. Students gain an in-depth knowledge of investments and managerial finance. Many graduates go on to complete a professional designation such as the Chartered Financial Analyst (CFA) or Certified Financial Planner (CFP). > [tru.ca/bba](http://tru.ca/bba)

## Fine Arts, Bachelor of **D** | BFA

### Faculty of Arts

Approach the visual arts within a university context through a blend of studio and theoretical courses. You will have access to facilities that include 26,000 square feet of workshops and studio space, and an art gallery for student and faculty exhibitions. > [tru.ca/finearts](http://tru.ca/finearts)

## Gas-fitting (Domestic/Commercial) **A**

### School of Trades & Technology

Learn the acquired skills to be able to do installs, tests, maintains and repairs propane and/or natural gas lines, appliances, equipment and accessories in residential and commercial premises. > [tru.ca/trades](http://tru.ca/trades)

## Geography and Environmental Studies **M** | BA

### Faculty of Arts

Learn from strong teaching and research expertise about sustainable urban and rural landscapes, environmental geography, economic geography, hydrology, climatology, geomorphology and emerging geomatic technologies, including Geographical Information Systems (GIS). > [tru.ca/ba](http://tru.ca/ba)

## Health Care Assistant **C**

### School of Nursing

This program has a job readiness focus, with emphasis on training workers who can support the physical, emotional, environmental and social needs of clients in local elder care and continuing care facilities. > [tru.ca/hcs](http://tru.ca/hcs)

## Health Science, Bachelor of, dual credential (Respiratory Therapy) **D** | BHSc

### Faculty of Science

The dual diploma/degree stream allows successful students to graduate with both a 3-year RT diploma and a Bachelor of Health Science within a four-year period. Year one is the same for both RT diploma and dual credential. > [tru.ca/rt](http://tru.ca/rt)

## Heavy Duty Equipment Technician **A**

### School of Trades & Technology

Leave this program with the full range of knowledge, abilities and skills required to diagnose, repair, adjust, overhaul, maintain, operate and test the mobile, heavy duty machinery used in the construction, forestry, mining, petrochemical, material handling, landscaping, land clearing, transportation, road building and farming sectors. > [tru.ca/trades](http://tru.ca/trades)

## Heavy Mechanical Trades **F**

### School of Trades & Technology

Pre-apprenticeship training for all four of the heavy mechanical trades; Heavy Duty Equipment Technician, Truck and Transport Mechanic, Diesel Engine Mechanic, Transport Trailer. Credit is granted for Level One technical training and 450 hours of work. > [tru.ca/trades](http://tru.ca/trades)

## History **M** | BA

### Faculty of Arts

Provides students with an extensive knowledge of humanity's recorded past. The study of history offers the student the opportunity to develop mental skills and teaches the student how to organize and classify extensive data. > [tru.ca/ba](http://tru.ca/ba)

## Horticulture **C**

### School of Trades & Technology

Providing basic training for work in the horticulture field, the program is very hands on with 70% of the time spent in landscape development for the campus. The 9 month certificate acts as year one of the diploma in Horticulture and Management. > [tru.ca/hort](http://tru.ca/hort)

## Horticulture and Management **Di**

### School of Trades & Technology

The diploma builds onto the Horticulture Certificate and provides increased business knowledge and skills needed for supervisory work and for opening a business in horticulture. > [tru.ca/hort](http://tru.ca/hort)

## Human Resource Management **M** | BBA

### School of Business & Economics

Become a specialist in "employee relations", managing employee planning, recruitment, compensation, training and development, health and safety, and evaluation. Also learn to take the lead in union contract negotiations, grievance handling, including mediation and arbitration, and all other employee-related legal matters such as wrongful dismissal, or personal harassment. > [tru.ca/bba](http://tru.ca/bba)

## Human Service **Di**

### Faculty of Human, Social and Educational Development

Prepare for a career with agencies that provide support and assistance to individuals coping with economic disadvantage, mental health issues, developmental, gender and diversity issues, as well as challenges such as addiction, family change and involvement with the justice system. > [tru.ca/humanservice](http://tru.ca/humanservice)

## Interdisciplinary Studies, Bachelor of | BIS

### Faculty of Arts

Perfect for students who want a more flexible and varied learning experience in their university degree program, and those who are not yet sure of a career path. It allows students to explore their interests, passions and potential career options without having to plan a specific Major within an Arts, Science or Business degree program.

> [tru.ca/arts](#)

## International Business | BBA

### School of Business & Economics

A challenging program that prepares students for positions as managers and entrepreneurs in the increasingly global business environment.

> [tru.ca/bba](#)

## Journalism, Bachelor of | BJour

### Faculty of Arts

Focusing on writing, editing, interviewing, photography and working with technology to produce print and online publications. Other aspects of the degree emphasize media law, journalistic ethics, decision making and critical thinking. > [tru.ca/journalism](#)

## Juris Doctor (Law) | JD

### Faculty of Law

Obtain a dynamic legal education with a widely respected curriculum taught by an outstanding group of legal academics. It is a three year, full time studies degree with the benefit of state-of-the-art facilities including a modern law library.

> [tru.ca/law](#)

## Management | Di

### School of Business & Economics

A two-year program that helps students develop key employment skills in areas such as accounting, oral and written communications, problem solving, marketing, human relations, economics, law, information systems, and business ethics and readies them for entry-level general administration and sales positions. > [tru.ca/mgmt](#)

## Marketing | BBA

### School of Business & Economics

A challenging program that prepares students to assume many of the most important positions in business. Students will learn the skills to devise profitable new product or service ideas that meet the needs of specific targets, as well as how to develop and execute their detailed plans.

> [tru.ca/bba](#)

## Mathematics | BA, BSc

### Faculty of Arts, Faculty of Science

Obtain knowledge on the practical applications in many areas such as physical and life sciences, finance and economics, computing and information theory, social sciences, and even fine arts. Gain an understanding of math as the science of patterns, which have evolved from roots in simple arithmetic to a complex language. > [tru.ca/ba](#) > [tru.ca/bsc](#)

## Mathematics and Economics | BA

### Faculty of Arts, Faculty of Science

This program explores the fields of mathematics and economics. The program equips students with the knowledge and an appreciation of ways in which mathematics and economics interact to describe human behavior and our economy.

> [tru.ca/ba](#)

## Metal Fabrication

### School of Trades & Technology

Metal fabricators interpret drawings and are involved in the development of structural and mechanical fabrications. Fabricators build, assemble and repair products made of steel or other metals for use in a wide variety of manufacturing and construction industries. > [tru.ca/trades](#)

## Natural Resource Science, Bachelor of | BNRS

### Faculty of Science

Gain a very broad and solid background in the wide variety of areas relating to the natural resources, as well as obtaining knowledge towards a better understanding and management of these resources. > [tru.ca/bnrs](#)

## New Venture Creation | BBA

### School of Business & Economics

Learn to research new business ideas, prepare formal business plans, secure initial financing, and manage small businesses on an on-going basis.

> [tru.ca/bba](#)

## Nursing, Bachelor of Science in | BScN

### School of Nursing

Gain technical knowledge, human understanding, and practical skills to administer responsible and client-centered care. Prepares students to be competent nurses in a variety of health care practice agencies (Institutional, Community and International), and with people who have a variety of health concerns. > [tru.ca/nursing](#)

## Partsperson and Warehousing

### School of Trades & Technology

Designed to prepare students for employment in parts departments such as those found in automotive repair shops, heavy machinery repair shops, truck repair shops, government maintenance shops, mine maintenance shops, automotive parts retailers and wholesalers, etc. > [tru.ca/trades](#)

## Philosophy | BA

### Faculty of Arts

Philosophy is the study of knowledge, reason, existence, and value. Students will learn to carefully consider the nature of the universe, humanity's place in it, the proper conduct of individual and social life, and what we can know.

> [tru.ca/ba](#)

## Physics | BSc

### Faculty of Science

Combines rigorous training in the ideas and concepts of the physical world with practical experience in electronics, computing, data acquisition, optics and other fundamental topics. A strong base for students to expand their expertise in applied science and technology fields.

> [tru.ca/bsc](#)

## Plumber/Pipefitting

### School of Trades & Technology

This course is an introduction to the following trades: gas fitting, plumbing, sprinkler system installer, steamfitter/pipefitter. (Apprenticeship offered for plumbing only). > [tru.ca/trades](#)

## Police and Justice Studies

### Faculty of Arts

Prepares graduates for careers in policing as well as corrections, parole, customs, and other government services at the federal, provincial or municipal levels. > [tru.ca/pjs](#)

 Major	 Graduate Degree
 Degree	 Apprenticeship
 Diploma	 Foundation
 Certificate	



### Power-Line Technician **A**

School of Trades & Technology

Gain skills and knowledge in the instruction, maintenance and repair of the overhead and underground electrical power transmission and distribution systems that make up the electrical power grid. > [tru.ca/trades](https://tru.ca/trades)

### Practical Nurse (PN) **Di**

School of Nursing

Provides learners with the knowledge, skills, judgments, and attitudes to perform to the competencies identified by the College of Licensed Practical Nurses of British Columbia. (Williams Lake Campus Only.) > [tru.ca/nursing](https://tru.ca/nursing)

### Psychology **M** | BA

Faculty of Arts

The scientific study of behavior in all its forms, psychology relates to virtually every aspect of peoples' lives. Through research, psychology plays an important role in understanding and predicting human behaviour. Through clinical practice, psychology strives to help people live more productive and fulfilling lives.

> [tru.ca/ba](https://tru.ca/ba)

### Public Relations **M** | BJour

Faculty of Arts

Blends core knowledge, skills, and practice of journalism with a focus on public relations, human resource management, marketing, and international business perspective.

> [tru.ca/journalism](https://tru.ca/journalism)

### Resort and Hotel Management **Di**

Faculty of Adventure, Culinary Arts and Tourism

Designed to create tourism professionals with career mobility, this program blends theory and hands-on learning to impart the technical and managerial skills needed to accomplish a variety of jobs within hotel/resort operations.

> [tru.ca/rhm](https://tru.ca/rhm)

### Respiratory Therapy **Di**

Faculty of Science

This professional medical program trains therapists who specialize in cardiopulmonary disease prevention and education in the assessment and treatment of disorders of the lungs, heart, and the vascular system and includes a one year clinical at various hospitals. It is the only program in BC and is considered one of the best in Canada.

> [tru.ca/rt](https://tru.ca/rt)

### Retail Meat Processing **C** **A**

Faculty of Adventure, Culinary Arts and Tourism

The only program of its kind in BC, this program trains you for a career in the meat cutting industry. The program is 80% hands-on and 20% theory, with work experiences at businesses across the province. > [tru.ca/retailmeat](https://tru.ca/retailmeat)

### Saw Filer **A**

School of Trades & Technology

Three trades make up the saw trades: saw fitting, circular saw filer, and bench person. The saw filer apprentice program provides the knowledge and skills required to become both a provincially and inter-provincially certified tradesperson. (Williams Lake Only.) > [tru.ca/trades](https://tru.ca/trades)

### Science, Bachelor of **D** | BSc

Faculty of Science

A rigorous program providing students both depth and breadth in their science education. Students also have extensive opportunities for practical experience and to work with internationally recognized professor-researchers across a spectrum of disciplines. > [tru.ca/bsc](https://tru.ca/bsc)

### Science, Bachelor of (Pre-Professional Health) **D** | BSc

Faculty of Science

Meets the requirements for entry into a variety of professional programs such as: Dentistry, Medicine, Pharmaceutical Sciences, Rehabilitative Sciences, Veterinary Medicine, Optometry, Chiropractic and Naturopathic Medicine. (Apply to Bachelor of Science.) > [tru.ca/science](https://tru.ca/science)

### Social Work, Bachelor of **D** | BSW

Faculty of Human, Social and Educational Development

Prepares students to work as generalist social work practitioners in various fields of practice such as: child welfare, mental health, addictions, women's service, family justice, corrections, health, and Indigenous people. The program has an orientation toward social justice, respect for diversity and social change. > [tru.ca/bsw](https://tru.ca/bsw)

### Sociology **M** | BA

Faculty of Arts

Sociology is the study of human society. This program will give students extensive knowledge of the key social factors affecting human behaviour and also develop skills in designing and evaluating research. > [tru.ca/ba](https://tru.ca/ba)



**Sports Event Management** Di

Faculty of Adventure, Culinary Arts and Tourism

Prepares graduates for work in the sports events industry. The program provides an introduction to the business skills and expertise required to produce and organize sports events, find appropriate sponsors, recruit and motivate volunteers, and successfully market events.

> [tru.ca/sem](http://tru.ca/sem)

**Theatre** M | BA

Faculty of Arts

Acting, directing, theatre history and technical theatre courses offer students a full range of theatre options. In addition, students can acquire credit through their participation and performance in several major productions staged by the department each year. > [tru.ca/ba](http://tru.ca/ba)

**Tourism Management, Bachelor of** D | BTM

Faculty of Adventure, Culinary Arts and Tourism

Focuses on key issues in local, regional, national and international tourism business and organizations, with concentrations in adventure, entrepreneurship or management. Prepares students for the growing tourism industry.

> [tru.ca/btm](http://tru.ca/btm)

**Water and Wastewater Technology** Di

School of Trades & Technology

Prepares students to operate and maintain water and wastewater treatment, distribution, re-use, and disposal facilities, as well as how to monitor source water quality. This program is designed to educate students in chemistry, microbiology, mathematics, mechanical and electrical systems, instrumentation and treatment technologies as they are applied in the water industry.

> [tru.ca/water](http://tru.ca/water)

**Water and Wastewater Utilities** C

School of Trades & Technology

An entry level training and education program in the operation and maintenance of Water and Wastewater Treatment, Distribution and Collection systems. > [tru.ca/water](http://tru.ca/water)

**Welding** F A

School of Trades & Technology

Learn to be a trained professional who is capable of welding ferrous and non-ferrous metals in all positions, on both plate and/or pipe, using SMAW, GTAW, and FCAW processes. > [tru.ca/trades](http://tru.ca/trades)

**Graduate Programs**

**Business Administration, Master of** G | MBA

School of Business and Economics

The MBA focuses on producing managers and leaders who can meet these challenges with emphasis on decision making in an uncertain environment, interpersonal and communication skills, ethics and social responsibility, and globalization. > [tru.ca/mba](http://tru.ca/mba)

**Education, Master of** G | MEd

Faculty of Human, Social and Educational Development

This program offers thesis, final project or capstone course options. Designed for the working professional involved in education, training or employee development, this program is structured for full- or part-time study. > [tru.ca/education](http://tru.ca/education)

**Science in Environmental Science, Master of** G | MScES

Faculty of Science

A program that fills local, regional, provincial, national and international needs for environmental scientists. The program is designed to produce graduates who are innovative researchers and have multi-disciplinary skills and broad knowledge in the field of environmental science. It is structured to be unique, flexible and relevant. > [tru.ca/science](http://tru.ca/science)

<span>M</span> Major	<span>G</span> Graduate Degree
<span>D</span> Degree	<span>A</span> Apprenticeship
<span>Di</span> Diploma	<span>F</span> Foundation
<span>C</span> Certificate	

[tru.ca/programs](http://tru.ca/programs)

Did you know?

**TRU's Sustainability Grant Fund and Revolving Energy Fund** allow students to contribute towards aggressive reduction targets that include; 25 percent in energy and water use, 50 percent in paper use and waste going to landfills.

**1809+**  
INTERNATIONAL  
STUDENTS

**DUAL**  
Enrolled  
On-campus and  
Online Students  
**750**

ONLINE &  
DISTANCE

OPEN

LEARNING

Unlock the Possibilities

Achieve your goals, wherever you are. TRU, Open Learning removes the barriers to quality post-secondary distance and online education by offering continuous enrolment, flexible scheduling and minimal admission requirements. Take one course or a complete degree program, and study at your own pace.

[truopen.ca](http://truopen.ca)



Jamie O. | 11:48AM | TRU Residence

# BE AT HOME @ TRU

# YOURSELF

Living on campus means being minutes away from your classes, enjoying easy access to campus and nearby city recreational facilities and belonging to a great, active community of other students from Canada and around the world.

## TRU Residence:

Home to 570 students, our modern, 11-storey student residence has some of the best views in the city. Each private bedroom includes a desk, chair, double bed, phone, TV and lamp. Floors are co-ed, but individual units are either all female or all male. Choose either a two- or four-bedroom suite.

\$6,370-\$6,650

Apply online at [truvez.ca](http://truvez.ca)

Phone: 250.828.8999

Email: [info@truvez.ca](mailto:info@truvez.ca)

## On Campus Housing Units:

There are 300 self-contained rooms in housing units within three buildings on campus. Each unit contains a kitchenette, common area and shared washroom and all residents have access to a central building with study and recreation space. Each housing unit is assigned to four males and four females.

\$4,100-\$4,570

Apply online at [trustudenthousing.com](http://trustudenthousing.com)

Phone: 250.372.7778

Email: [info@trustudenthousing.com](mailto:info@trustudenthousing.com)

## Living Off Campus:

There are many accommodations available off campus, close to TRU.

## Did you know?

TRU Residence guarantees space for 1st year students

If you currently live outside of Kamloops and enrol to attend TRU for the first time in a degree or diploma program of at least 2 years in duration, you are guaranteed a room in 'Rez' if you apply by **March 1, 2015**. After that date, applications will be accepted on a first-come, first served basis.

[tru.ca/housing](http://tru.ca/housing)



LOVE  
YOUR  
LIFESTYLE

UNIVERSITY



# WILL YOU BACK THE PACK?\*

<b>Baseball</b>	<b>Men's</b>
<b>Basketball</b>	<b>Men's Women's</b>
<b>Cheerleading</b>	<b>Co-ed</b>
<b>Cross-country</b>	<b>Co-ed</b>
<b>Hockey</b>	<b>Men's</b>
<b>Soccer</b>	<b>Men's Women's</b>
<b>Swimming</b>	<b>Co-ed</b>
<b>Volleyball</b>	<b>Men's Women's</b>

**[gowolfpack.tru.ca](http://gowolfpack.tru.ca)**

\*WolfPack sports include both Varsity teams and Athletic clubs.  
See **[tru.ca/athletics](http://tru.ca/athletics)** for details and game schedules.





BECOME A FAN

FEEL



AND





Chantal P. | 4:11PM  
visiting Venice, Italy  
Study Abroad - Germany



Study Abroad  
Paige W. | 5:30PM | Australia

YOU  
CAN  
BE  
ENRICHED

## LEARN BY DOING

Experiential learning, or “learning by doing” – in the classroom, lab, workplace, community or abroad – is a great way to enrich your classroom studies. Here are some of the ways in which you can enhance your experiential learning at TRU.

### International Education:

Incorporate an international experience into your studies. You’ll broaden your perspective, expand your job opportunities, and have fun. Plus, it can count towards your degree.

### Co-op:

Co-operative Education gives you the opportunity to enhance your education by acquiring career-related work experience before graduation as you alternate study terms with paid, monitored work terms in professional industry, non-profit, private business, and public sector organizations.

### Research:

Many TRU undergraduate programs – including bachelor’s degrees and diplomas – provide opportunities to learn through creative inquiry into aspects of life and hands-on participation in applied projects. Engaging in research while you are a student can increase your academic and professional success. TRU professors are committed to mentoring you and helping you to meet your research goals.

Study Abroad and  
Field Schools:

[tru.ca/studyabroad](http://tru.ca/studyabroad)

Global Competency  
Certificate:

[tru.ca/global](http://tru.ca/global)

Co-op is available  
to students in the  
following programs:

- > Bachelor of Arts
- > Bachelor of Business Administration
- > Bachelor of Computing Science
- > Bachelor of Interdisciplinary Studies
- > Bachelor of Natural Resource Science
- > Bachelor of Science
- > Bachelor of Tourism Management
- > Computing Science Diploma

[tru.ca/services/beyond](http://tru.ca/services/beyond)

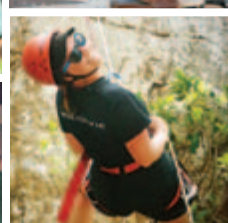




Students Corner  
8:35AM | Old Main



Cheer Team | 11:22AM | TCC



Bike Blender  
10:55AM | CAC





# YOU@TRU

# PICTURE IT

Student Recruitment Office,  
OM1155

Thompson Rivers University  
900 McGill Road, Kamloops, BC  
V2C 0C8 Canada

Phone: 250.828.5006

Email: [recruitment@tru.ca](mailto:recruitment@tru.ca)

**Book a campus tour**  
(available year-round):

> [tru.ca/tours](http://tru.ca/tours)

**tru.ca**



[tru.kamloops](http://tru.kamloops)



[@myTRU](https://twitter.com/myTRU)



[thompsonriversu](https://www.thompsonriversu)

THOMPSON RIVERS



UNIVERSITY

This publication was printed in July 2014, one year before the 2015/2016 academic year. If there are any discrepancies between this publication and the Thompson Rivers University calendar, the calendar will take precedence.