



BLAKEBURN ELEMENTARY  
1040 Riverside Drive  
Port Coquitlam, BC V3B 8A7  
(604) 944-9037, Fax (604) 937-6876

## From the Principal's Desk...



Hi Blakeburn Families,

Please take a moment to read through this email. There is a lot of important information included around upcoming events. I have also had a number of questions around class placement and how that process works. I thought I would include a little FAQ, which will give you more information on the process we go through.

These are busy times at Blakeburn. Based on our 6 Cedars Animals, our 30 Days of Learning Goal for April and May are Salmon and Raven: Creative and Critical Thinking. We decided to blend the two together because I am not sure you can have one without the other? In our classes, we have been talking about what it means to be both a creative and critical thinking and why these skills are so important. Through creative thinking, students learn how to generate and develop ideas in a variety of ways. They are encouraged to take risks, try things out, and learn to not be afraid to fail in the process. Any creative endeavour includes the risk of failing but part of the process is dusting ourselves off, looking at a plan with a critical eye, and trying again. Through critical thinking we learn how to analyze a problem, how to ask questions, and how to develop and design a plan.

Some of our teachers have done some neat creative and critical thinking challenges with their students. I recently watched a class of primary students try to create the tallest tower with cups. In advance, they learned how to collaboratively design their tower, how to test out their design, and how to rethink their plan when the tower falls, which it eventually always does.

They also talked about how to deal with frustrations and then move on. We also have classes taking on some pretty cool inquiry based projects, which also blend both the creative and critical thinking elements. We look forward to the coming month!



Have a great weekend!

😊 Ms. Becker

## **STUDENT CLASS PLACEMENT Guidelines, Questions & Answers**

Placing students in the most appropriate class for an academic year is a complex process and is handled with care and thought. The main goal is that each student receives a classroom placement that will meet his/her academic and social-emotional needs.

Here are the answers to questions you may have to help you understand the process better.

### ***Q: How is staff assigned to our school?***

Planning for the school year begins in April when enrollment projections are studied. Based on anticipated registration, the school is allocated staffing. This allocation is calculated under the guidelines of class size and composition as outlined by the BC Ministry of Education.

### ***Q: How are classes formed?***

The principal assigns teachers to each class and a team begins the process of forming classes. This team includes the principal, classroom teachers, non-enrolling teachers and student services teachers. This process is not finalized until after the first week of school in September, once an accurate enrollment has been determined. The following factors are considered when forming classes:

- adherence to BC Ministry of Education criteria
- needs of student services (EAL, learning support, EA supports)
- student leadership
- grade and gender balance
- learning style and intellectual/social/emotional/physical needs
- behaviour and work habits
- social relationships

### ***Q: How important is it that my child be placed with his/her friends?***

Social and emotional needs are important to the success of a child in school. However, that does not mean having a child's friends in a class is the answer. Making new friends and working cooperatively with others is an essential life skill. We build class groupings that take into account the skills and qualities that students can bring to a group.

### ***Q: Do parents have a choice of classrooms?***

Given our large school population, and the complexity of the class placement process, it is not possible to offer choice in class placement. The school is given the responsibility under the School Act to make placement decisions. However, parents do have the opportunity for input and their opinions are given consideration. Due to the complexity of the class placement process, requests for specific teachers (or not to have specific teachers) cannot be considered

### ***Q: What type of parent information is helpful for teachers in determining student placement?***

Parent input on the needs of their children is appreciated and a cooperative relationship between home and school is encouraged. Before the placement meetings, we appreciate being

informed of any information regarding unique educational, personal, medical or social needs of a child. Please note that this information is not a request for placement in a specific class.

***Q: When and how can parents give input about their child's placement?***

It is important that any input presented for consideration be given prior to the student placement meetings that begin in June. Therefore, written information must be received by Ms. Becker by **Monday, May 27, 2019**. Please note that this information is shared with the team that will be placing your child. As the placement process is a complex one, and even one movement can have a ripple effect, input made after this date cannot be accepted.

***Q: Do students go right into their new classrooms on the first day back to school?***

During the first week, students return to their last year's class where they participate in a school-wide opening week. The theme of our opening week is around our school goal for the year. During that first week, we finalize enrollment numbers, factor in new registrations and students who have moved, and finalize our class placements. The district monitors our enrollment and our staffing needs and this first week gives us the much-needed opportunity to ensure we have the appropriate amount of classroom space for all our in-catchment students.

***Q: How can I help to prepare my child for placement in September?***

We know there is sometimes anxiety and worry about starting a new school year. As a parent, be encouraging and supporting. Fortunately, experience proves that the clear majority of students quickly accept their new teacher, become involved and look forward to being part of a class community. Teachers are masters at helping a student adapt to change and make new friends. Listen to their worries and help them problem solve. Sometimes establishing a plan to tackle those worries is all they need. Finally, have confidence in their ability to be resilient and to adapt to changes. Kids are highly intuitive, and they pick up on the stress and worries of the adults in their lives. If we feel they can't navigate their way through change or disappointment, the message being sent is that we don't have confidence in their ability to persevere or to be okay when things get tough. Building resiliency does not come through avoiding disappointments, worries, or tough times. Resiliency comes through navigating through those tough times, with the support of the adults in their life who believe in them.

***Q: What do I do if I have more questions/concerns?***

Questions around your child should always go to their teacher first. Any questions around the class placement process in general should come to Ms. Becker.

## Walk-a-thon

Our Walk-a-thon was originally scheduled for May 10<sup>th</sup>. For a variety of reasons, we are postponing this event. Please stay tuned.

## News from you PAC

### **Just a reminder that Neufeld orders are due May 9<sup>th</sup>**

#### **YEARBOOKS ARE NOW ON SALE!**

It's that time of year again! PAC is very excited to offer a Blakeburn Yearbook again this year. As previous years, the yearbook is full colour with a durable soft cover. The yearbook will include individual and group photographs of all the classes (Kindergarten through Grade 5). It will also include candid photos taken at Blakeburn events, such as field trips, Christmas and school-wide gatherings. Kids love looking through their yearbooks, and having friends sign it at the end of the year. If you are interested in ordering a copy for your child, please fill out the form on KEV before May 31. **The yearbook is available by pre-order only.**

Cost is \$20 each, including all taxes. Delivery will be during the last week of school.

There is a copy of last year's yearbook available to view in the office if you would like to take a look at it.

*Important Note: We do not purchase extra books, so please make sure to order through KEV before the deadline to get your copy!*

If you have any questions, please email Joanna at yearbook@[blakeburnpac.org](mailto:yearbook@blakeburnpac.org).

#### **The Staff Appreciation Luncheon is Tuesday, May 14.**

Every year the parents of Blakeburn students host a staff appreciation luncheon to thank our wonderful teachers and school staff for their hard work during the year and their dedication to our childrens' well-being and education. We are still looking for parents to sign up, particularly for clean-up.

Items can be delivered to the school anytime between 8:15 am and 11:30 am. Please deliver your items in a disposable container or have your name on the bottom of your dish and serving spoons. We encourage hot dishes to be delivered around 11:30 am but we can also heat them up if needed. Dishes can be picked up any time after 1:00 pm from the PAC Kitchen.

Thanks for your donation, in food or in service. It is much appreciated! Sign up now! <https://www.signupgenius.com/go/30E054CAFAB2EA64-staff>

Questions? Email [andrea@andreahoworth.com](mailto:andrea@andreahoworth.com)



## Meeting & Elections

### Your help is Needed!

Dear Parents

The PAC is made up of parents like you - busy juggling family, careers, activities and other demands. The PAC simply cannot exist without parent involvement. We work together to support various initiatives, all in the INTEREST OF OUR CHILDREN.

**\*\* Activities such as Hot Lunch, Movie Nights, Pancake Breakfast, Carnival, Treat Days, etc. would not happen without the PAC. Larger initiatives such as playground additions, field trips and camps, sports gear or other upgraded supplies, and other key items or activities as identified by the Teachers and Principal, all rely on PAC funding. \*\***

**We need parents interested in being involved or these programs may not continue.** No amount of time is too little. No previous experience is required. How much you put in is entirely up to you!

All positions are open for nomination; however, the PAC is looking for new parents specifically for these positions:

- DPAC (District PAC – SD43)
- Secretary
- Treasurer (or co-treasurer)
- Fundraising Coordinator
- Health & Safety Coordinator
- Parent Volunteer Coordinator
- Multicultural Liaison
- Members at Large

We invite you to attend the **next PAC meeting on May 8 at 6:30 in the school library.** We will hold elections for all positions at this meeting as well as discuss budget planning for next year. Please join the conversation with our school Principal and the PAC.

If you are interested or have questions about these roles, please email the PAC President, Anita Wilson, at [president@blakeburnpac.org](mailto:president@blakeburnpac.org).

Website: [www.blakeburnpac.org](http://www.blakeburnpac.org) Find us on Facebook: "Blakeburn Elementary PAC"

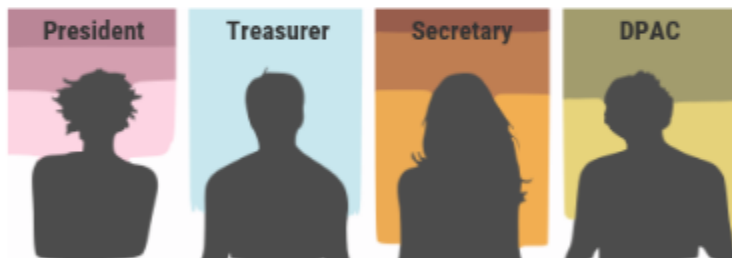


# ELECTION of EXECUTIVE OFFICERS

for 2019-2020 School Year

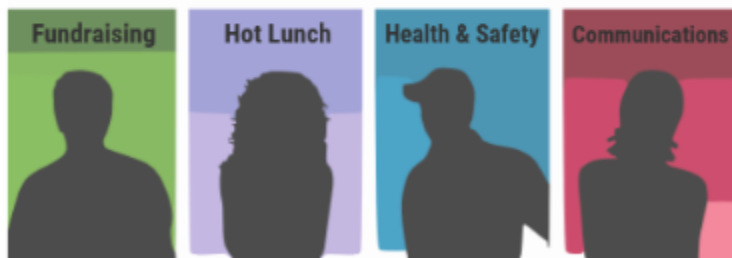
**WED, MAY 8 @ 6:30pm**  
**School Library**

- Do you want to be involved in decisions affecting your children?
- Do you want to help provide input for special events, fundraising initiatives, education choices and budget spending?
- The PAC cannot function without parents getting involved!



Nominations to be sent to:  
**President@blakeburnpac.org**

- self-nomination permitted
- nominations from the floor at the May 8th meeting accepted



other positions can include:

- Yearbook Coordinator
- Parent Education Coordinator
- Multicultural Liaison
- Parent Volunteer Coordinator
- Members at Large

**TO ADVOCATE FOR EXCELLENCE IN EDUCATION, THE SAFETY AND WELL-BEING OF OUR STUDENTS, AND FOR THE EFFECTIVE AND MEANINGFUL INVOLVEMENT OF PARENTS AS PARTNERS.**



## Peanut/Nut Allergy Reminder

Some of the students in our school have a severe allergy to peanuts/nuts. Because of this health concern we ask you to avoid sending snacks containing peanuts or nuts. Please remind your child not to share recess snacks with other students so that you know what your child is eating at school. Washing hands after eating (including breakfast), especially if peanut/nut products are eaten, is a healthy routine for all of us to establish and practice. Your cooperation with this situation will help to ensure the safety of all students.

## Link to the Calendar

<http://www.sd43.bc.ca/elementary/blakeburn/Lists/Calendar/calendar.aspx>

- May 8<sup>th</sup> Choir Festival
- May 9<sup>th</sup> Panorama Photos
- May 14<sup>th</sup> Staff Appreciation
- May 17<sup>th</sup> Parent Tea 2:00 to 2:40 (Details to go home)
- May 21<sup>st</sup> Welcome to Kindergarten 3:15 to 4:45
- May 23<sup>rd</sup> Track Meet
- May 24<sup>th</sup> Hot Lunch
- May 31<sup>st</sup> Activity Day
- June 3<sup>rd</sup> Pro-D Day
- June 6<sup>th</sup> Grade 6 for ½ day
- June 14<sup>th</sup> School Carnival
- June 20<sup>th</sup> Hot Lunch
- June 21<sup>st</sup> Grade 5 Leaving Ceremony
- June 25<sup>th</sup> Farewell Gathering
- June 27<sup>th</sup> Family Picnic
- June 27<sup>th</sup> Performance
- June 27<sup>th</sup> Last Day of School/ Reports Go Home



# SUMMER DAY CAMPS 2019

## School District No 43 (Coquitlam) Community Schools

### Community Schools are pleased to offer Summer Day Camp Programs

**WHERE:** Central Community School (2260 Central Avenue, Port Coquitlam)  
Pitt River Community School (2070 Tyner Street, Port Coquitlam)  
Minnehada Middle School (1390 Laurier Avenue, Port Coquitlam)  
Seaview Community School (1215 Cecile Drive, Port Moody)

**TIMES:** 9:00 AM – 2:45 PM (DOORS OPEN 8:45 AM & PICK UP BY 2:45 PM)

**AGE OF PARTICIPANTS:** Children's Camp: Grades Kindergarten – Grade 3  
Pitt River Youth Camp: Grades 4 – Grade 6

**CHILDREN'S CAMP COST:** \$125 – 5-day week / \$105 – 4-day week / \$35 daily rate

**YOUTH CAMP COST:** \$140 – 5-day week / \$125 – 4-day week / \$30 daily rate

**CONTACT:** Central & Pitt River Camps: Dasha Belskaya ([dbelskaya@sd43.bc.ca](mailto:dbelskaya@sd43.bc.ca))  
Minnehada Camp: Laura McKinley ([lmckinley@sd43.bc.ca](mailto:lmckinley@sd43.bc.ca))  
Seaview Camp: Shreya Qazi ([sqazi@sd43.bc.ca](mailto:sqazi@sd43.bc.ca))

### CHILDREN'S CAMP: CENTRAL, SEAVIEW & MINNEKHADA

| Week        | Dates                        | Cost  | # of Days | Days of week |
|-------------|------------------------------|-------|-----------|--------------|
| Camp Week 1 | Tues, July 02 – Fri, July 05 | \$105 | 4 Days    | Tues – Fri   |
| Camp Week 2 | Mon, July 08 – Fri, July 12  | \$125 | 5 Days    | Mon – Fri    |
| Camp Week 3 | Mon, July 15 – Fri, July 19  | \$125 | 5 Days    | Mon – Fri    |
| Camp Week 4 | Mon, July 22 – Fri, July 26  | \$125 | 5 Days    | Mon – Fri    |
| Camp Week 5 | Mon, July 29 – Fri, Aug 02   | \$125 | 5 Days    | Mon – Fri    |
| Camp Week 6 | Tues, Aug 06 – Fri, Aug 09   | \$105 | 4 Days    | Tues – Fri   |

### PITT RIVER YOUTH CAMP

| Week        | Dates                        | Cost  | # of Days | Days of week | FIELD TRIP of the week     |
|-------------|------------------------------|-------|-----------|--------------|----------------------------|
| Camp Week 1 | Tues, July 02 – Fri, July 05 | \$125 | 4 Days    | Tues – Fri   | BC Hall of Fame            |
| Camp Week 2 | Mon, July 08 – Fri, July 12  | \$140 | 5 Days    | Mon – Fri    | Vancouver Zoo              |
| Camp Week 3 | Mon, July 15 – Fri, July 19  | \$140 | 5 Days    | Mon – Fri    | Van Police Museum          |
| Camp Week 4 | Mon, July 22 – Fri, July 26  | \$140 | 5 Days    | Mon – Fri    | Planetarium                |
| Camp Week 5 | Mon, July 29 – Fri, Aug 02   | \$140 | 5 Days    | Mon – Fri    | Science World              |
| Camp Week 6 | Tues, Aug 06 – Fri, Aug 09   | \$125 | 4 Days    | Tues – Fri   | 2 <sup>nd</sup> Beach Pool |